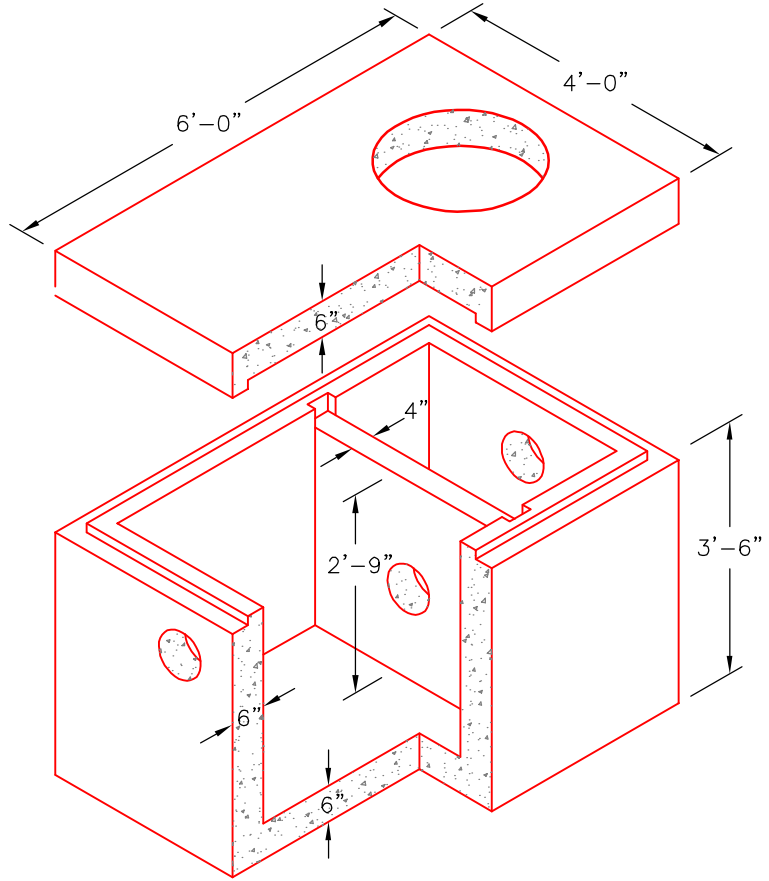


NOTES:

1. Concrete: 28 Day Compressive Strength $f'c = 4,000$ psi.
2. Steel Reinforcement: ASTM A-615, Grade 60.
3. Boxes meet H-20 Loading to 4' Depth.
4. Butyl Rubber Joint Sealant SS-S-00210.
5. Contractor to Verify Size and Location of all Openings.
6. Not Responsible for Watertight Joints.

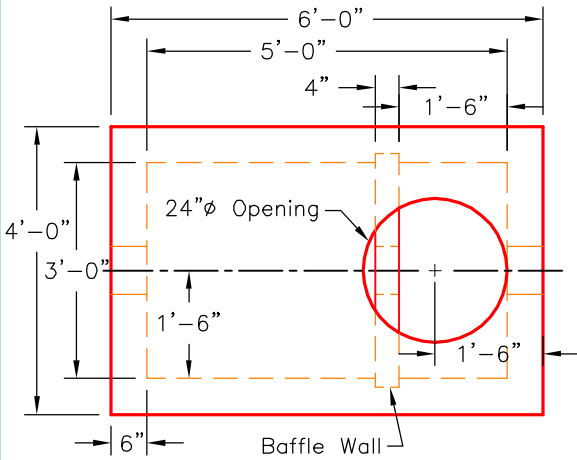
Weight Schedule

Top Slab	WT/Lbs
	1,564
Solid Base	WT/Lbs
	4,621
Baffle Wall	WT/Lbs
	430



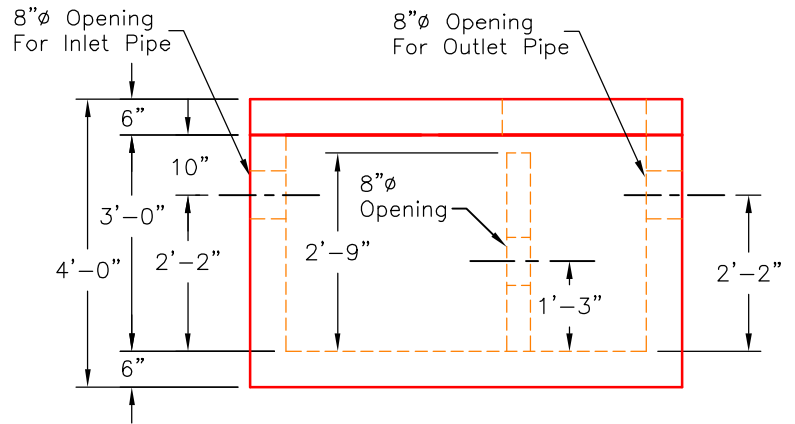
ISOMETRIC VIEW

N.T.S.



PLAN VIEW

N.T.S.



ELEVATION VIEW

N.T.S.



920 Withers Road Raleigh, NC.27603
Phone: 919.772.6301 Fax: 919.772.1209

366036-GI

FILE NAME: 450GIC6036_DET.DWG

ISSUE DATE: JULY, 2008

www.oldcastleprecast.com

**Grease Interceptor
100 Gallon**

Copyright © 2005 Oldcastle Precast, Inc.