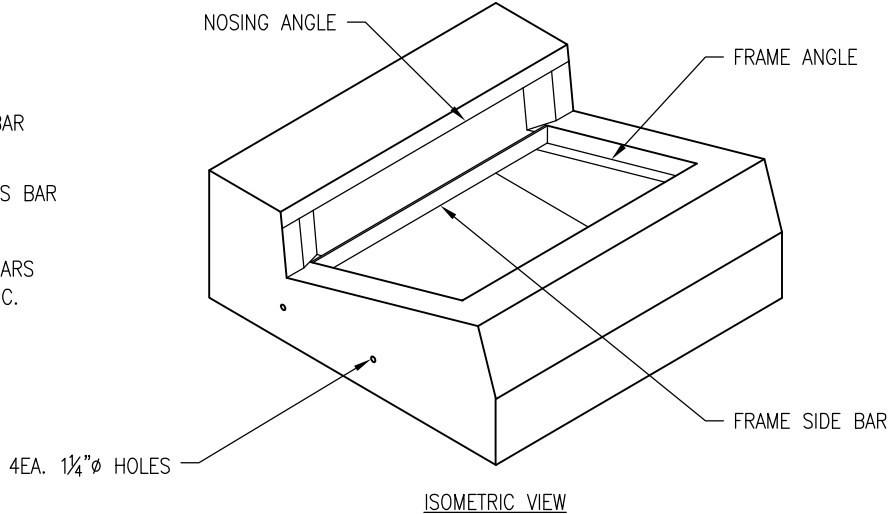
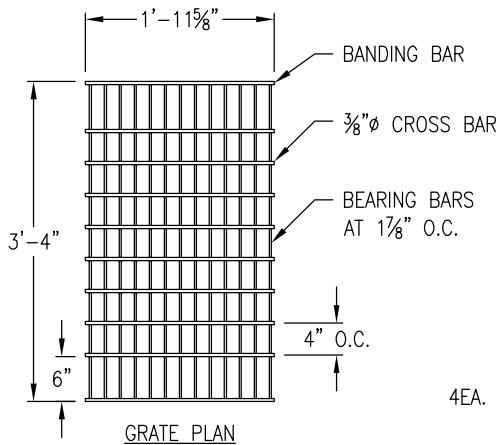


NOTES:

1. WHERE "H" IS 8'-0" OR LESS THE WALL THICKNESS SHALL BE 6". WHERE "H" IS GREATER THAN 8'-0", WALL THICKNESS SHALL BE 8".
2. STEPS SHALL BE INSTALLED ON ALL INLETS WHERE "H" IS 30" OR MORE.



GRATE (24-13) WT = 141 LBS
13 EA. BEARING BARS, 3 1/2" X 1/4"
2 EA. BANDING BARS, 2 1/2" X 1/4"

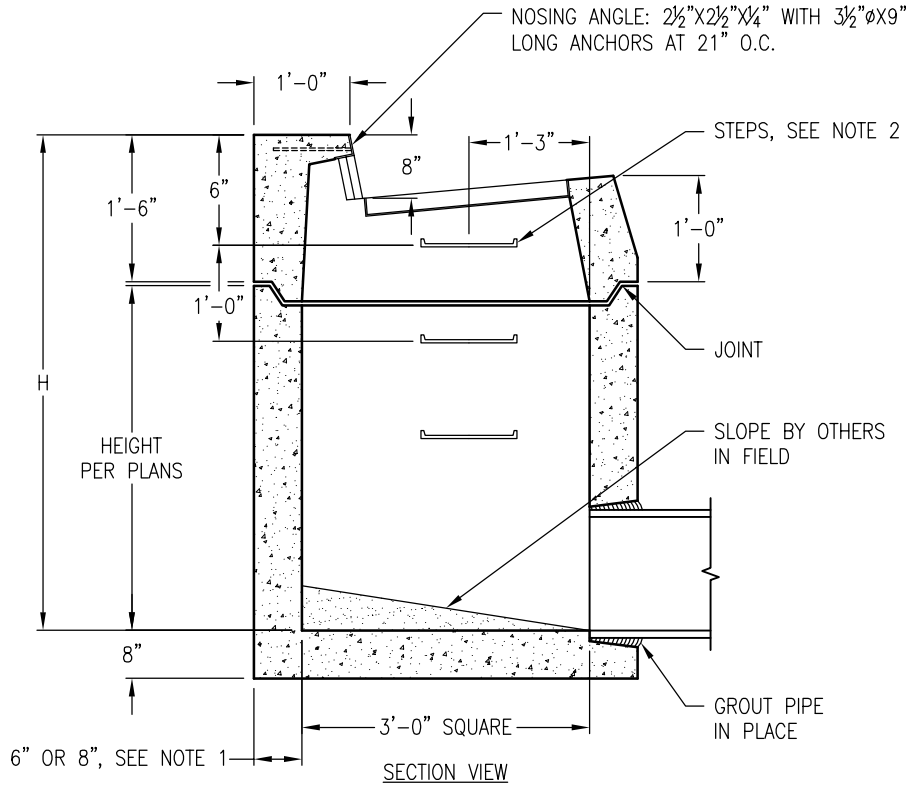
FRAME
4" X 3" X 1/4" ANGLES
3 1/2" X 1/4" SIDE BARS

OTHER AVAILABLE GRATES:

- GRATE (24-10S) RETICULINE, WT=182 LBS
- GRATE (24-12X) WITH CROSS BARS, WT=192 LBS
- GRATE (24-12) WITH NO CROSS BARS, WT=326 LBS
- GRATE (24-9) WITH NO CROSS BARS, WT=263 LBS

SPECIFY GALVANIZED OR RAW METAL FINISH

GRATES WITHOUT CROSS BARS ARE IN AREAS WHERE THERE ARE NO BICYCLES OR PEDESTRIANS.



TOP WEIGHT: 1,350 LBS.
 WEIGHT OF GRATE: 141 LBS
 WEIGHT OF BASE VARIES

DRAWING MAY NOT CONFORM TO THE MOST CURRENT SPECIFICATION

Oldcastle Precast[®]

Northern California

Madera ■ Morgan Hill ■ Pleasanton ■ Santa Rosa ■ Stockton ■ Tulare

Phone: 925-750-6650 Fax: 925-750-6660

TYPE GO

FILE NAME: CDOT-1.DWG

REVISED: MARCH 2016

www.oldcastleprecast.com

TYPE GO DRAINAGE INLET CALTRANS

Copyright © 2016 Oldcastle Precast, Inc.