

NOTES:

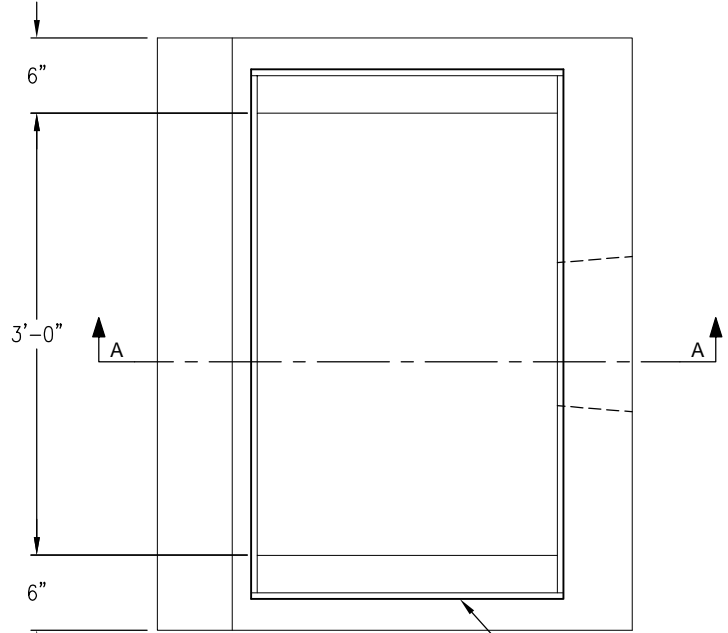
1. DRAINAGE INLETS ARE BUILT ACCORDING TO CALTRANS STANDARD PLANS, PAGE D73.

G3 CURB TOP AVAILABLE GRATES:

- GRATE (24-13) WITH CROSS BARS, WT=141 LBS
- GRATE (24-10S) RETICULINE, WT=182 LBS
- GRATE (24-12X) WITH CROSS BARS, WT=192 LBS
- GRATE (24-12) WITH NO CROSS BARS, WT=326 LBS
- GRATE (24-9) WITH NO CROSS BARS, WT=263 LBS

SPECIFY GALVANIZED OR RAW METAL FINISH

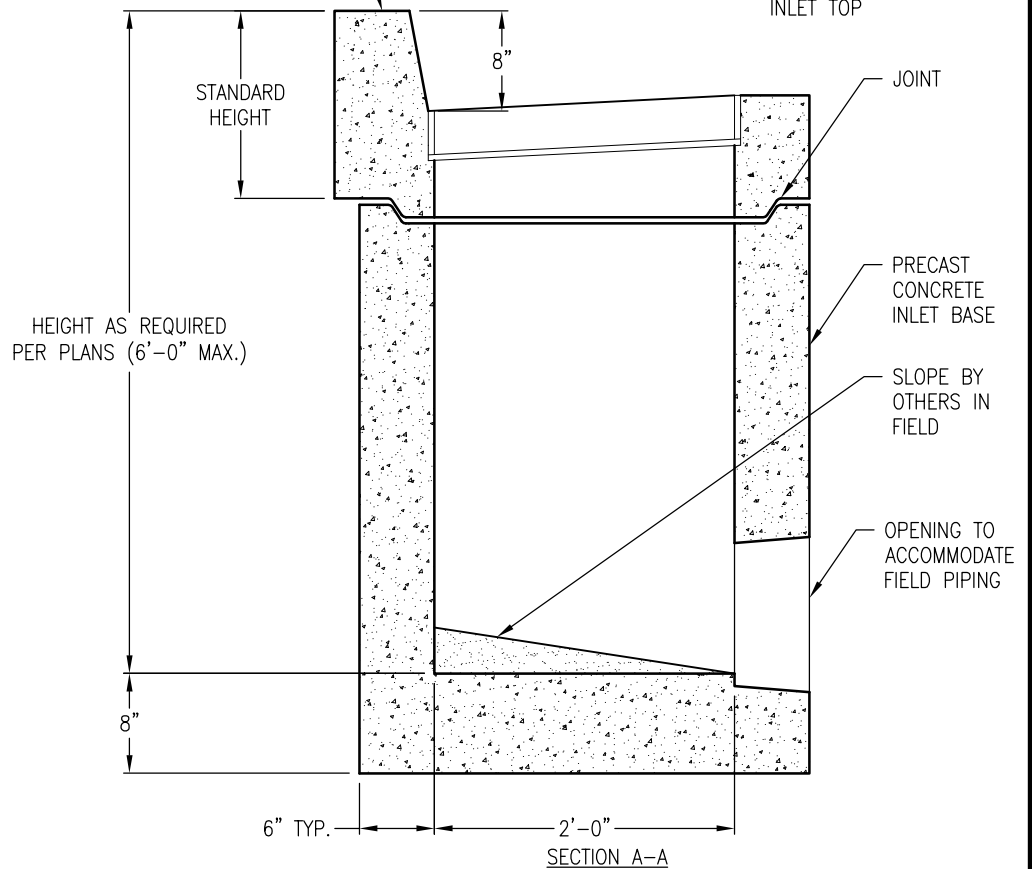
GRATES WITHOUT CROSS BARS ARE IN AREAS WHERE THERE ARE NO BICYCLES OR PEDESTRIANS.



EXPOSED REBAR SUPPLIED FOR FIELD
POURED CURB UNITS AS SPECIFIED

PLAN VIEW

CALTRANS TYPE 24 (600 METRIC) FRAME CAST INTO PRECAST CONCRETE INLET TOP



DRAWING MAY NOT CONFORM TO THE MOST CURRENT SPECIFICATION



Oldcastle Precast[®]

Northern California
Madera ■ Morgan Hill ■ Pleasanton ■ Santa Rosa ■ Stockton ■ Tulare
Phone: 925-750-6650 Fax: 925-750-6660

TYPE G3 W/ CURB TOP

FILE NAME: CDOT-6.DWG

REVISED: MARCH 2016

www.oldcastleprecast.com

**G3 2'-0"X3'-0"(I.D.) CURB TOP
DRAINAGE INLET
CALTRANS**

Copyright © 2016 **Oldcastle** Precast, Inc.