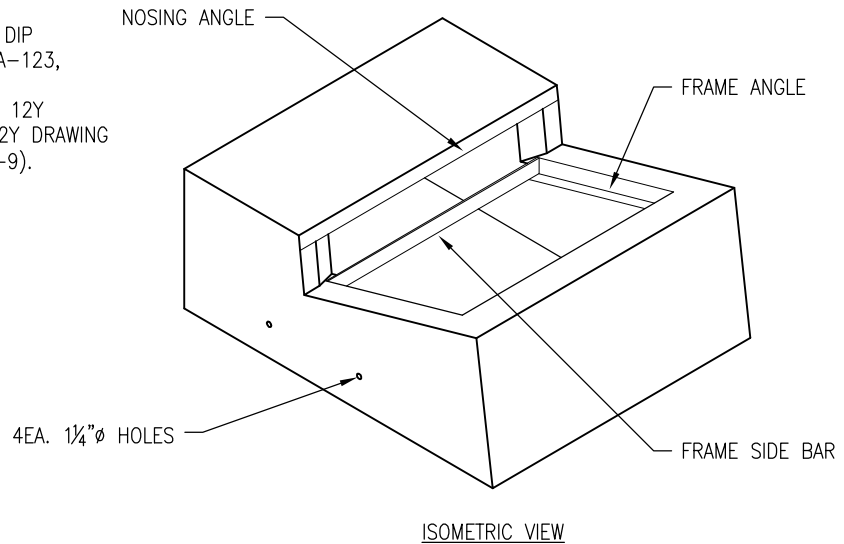


NOTES:

1. WHERE "H" IS 8'-0" OR LESS THE WALL THICKNESS SHALL BE 6". WHERE "H" IS GREATER THAN 8'-0", WALL THICKNESS SHALL BE 8".
2. STEPS SHALL BE INSTALLED ON ALL INLETS WHERE "H" IS 30" OR MORE.
3. FRAME, GRATE AND NOSING ANGLE SHALL BE HOT DIP GALVANIZED AFTER FABRICATION PER ASTM SPEC. A-123, UNLESS SPECIFIED OTHERWISE.
4. PRECAST TOP MAY BE COMBINED WITH THE 6Y OR 12Y GALLERY FOR GREATER FLOW CAPACITY, SEE 6Y-12Y DRAWING (PAGE FIB-2) AND GOL-6Y DRAWING (PAGE CDOT-9).

OPTIONAL:  $\frac{3}{4}$ " $\phi$  GUARD ROD  
INSTALLED WHEN SPECIFIED

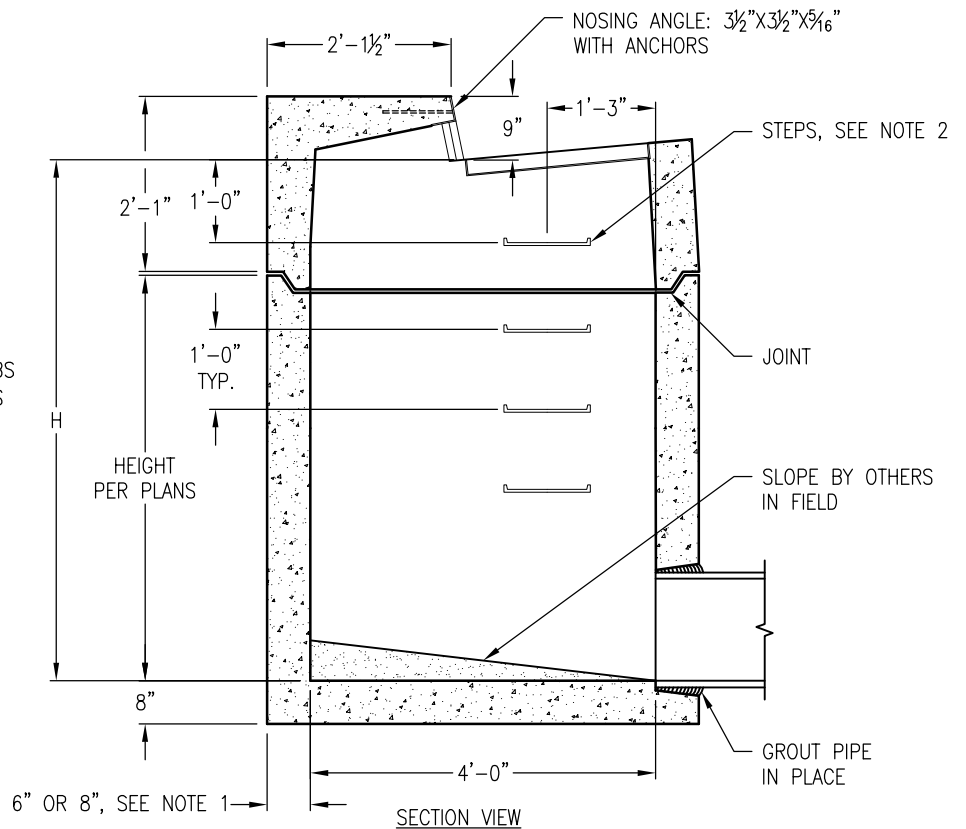


OTHER AVAILABLE GRATES:

- GRATE (24-10S) RETICULINE, WT=182 LBS
- GRATE (24-12X) WITH CROSS BARS, WT=192 LBS
- GRATE (24-12) WITH NO CROSS BARS, WT=326 LBS
- GRATE (24-9) WITH NO CROSS BARS, WT=263 LBS

SPECIFY GALVANIZED OR RAW METAL FINISH

GRATES WITHOUT CROSS BARS ARE IN AREAS WHERE THERE ARE NO BICYCLES OR PEDESTRIANS.



TOP WEIGHT: 2,450 LBS.  
WEIGHT OF GRATE: 141 LBS  
WEIGHT OF BASE VARIES

DRAWING MAY NOT CONFORM TO THE  
MOST CURRENT SPECIFICATION