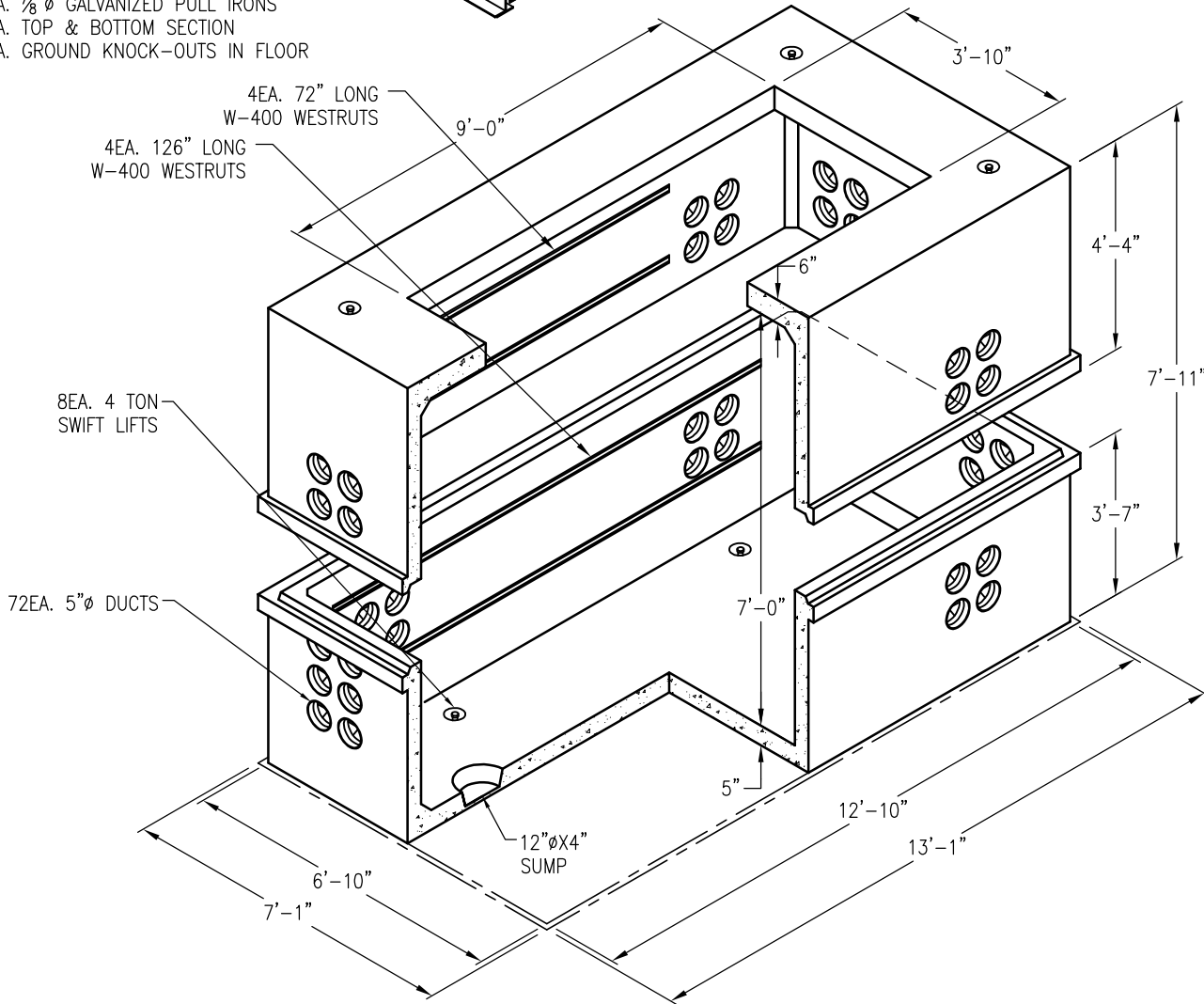


NOT SHOWN:

- 8EA. 7/8"Ø GALVANIZED PULL IRONS
- 4EA. TOP & BOTTOM SECTION
- 4EA. GROUND KNOCK-OUTS IN FLOOR



CONCRETE COVER WEIGHT: 5,065 LBS  
TOP SECTION WEIGHT: 13,750 LBS  
BASE SECTION WEIGHT: 14,500 LBS

DRAWING MAY NOT CONFORM TO THE  
MOST CURRENT SPECIFICATION

**Oldcastle Precast**<sup>®</sup>

Northern California  
Madera ■ Morgan Hill ■ Pleasanton ■ Santa Rosa ■ Stockton ■ Tulare  
Phone: 925-750-6650 Fax: 925-750-6660

CPA-612

FILE NAME: CPA-11.DWG

REVISED: MARCH 2016

[www.oldcastleprecast.com](http://www.oldcastleprecast.com)

6'-0" X 12'-0" X 7'-0" (I.D.)

CPA-38Y-612

CITY OF PALO ALTO

Copyright © 2016 Oldcastle Precast, Inc.