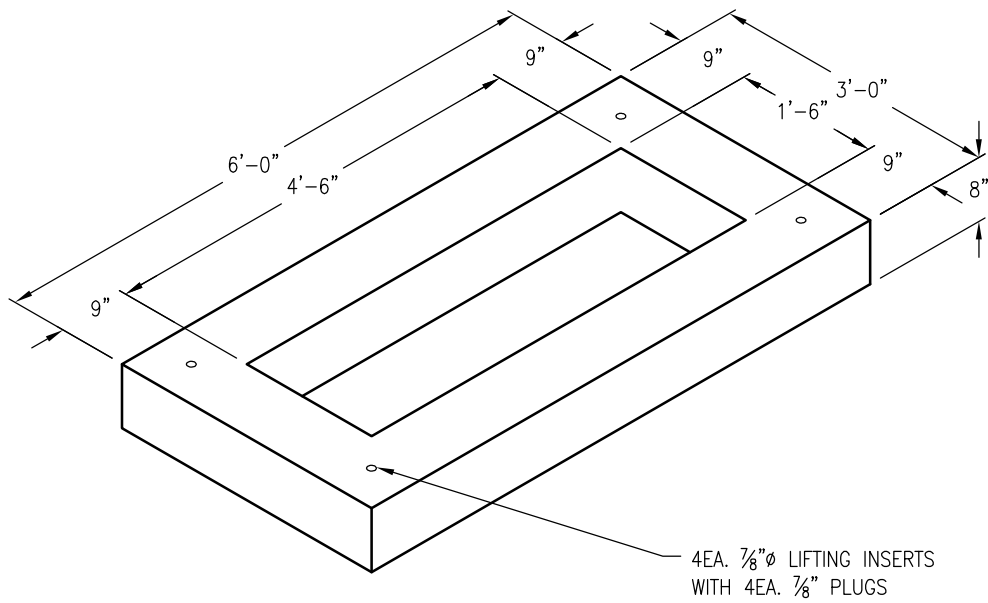
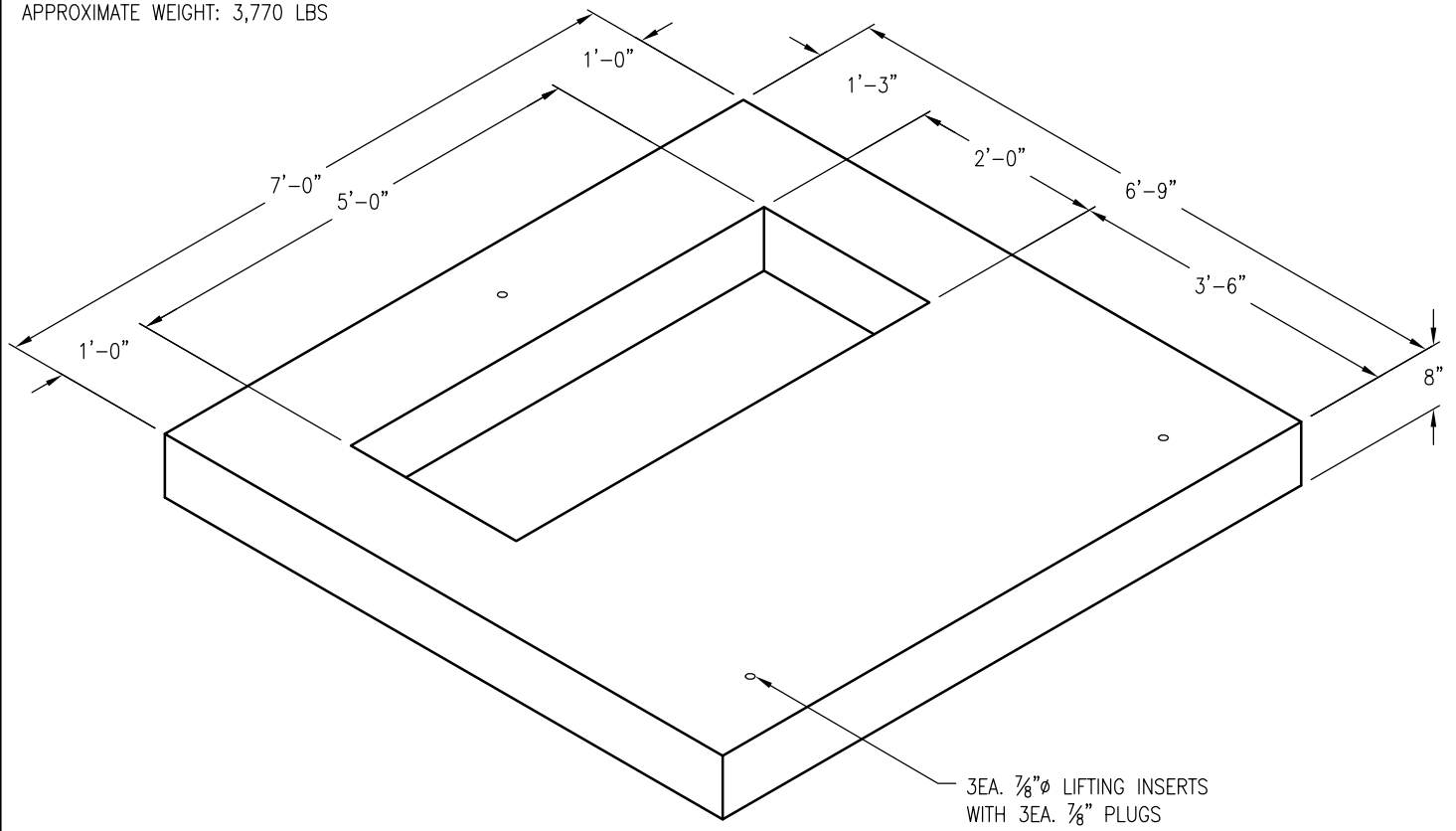


PADMOUNT SWITCHGEAR CONCRETE PAD  
 81"X84"X8" O.D.  
 APPROXIMATE WEIGHT: 3,770 LBS

CPA-12



PRECAST CONCRETE PAD FOR LBC CABINET  
 36"X72"X8" O.D.  
 APPROXIMATE WEIGHT: 1,140 LBS

DRAWING MAY NOT CONFORM TO THE  
 MOST CURRENT SPECIFICATION



**Oldcastle Precast**<sup>®</sup>  
 Northern California  
 Madera ■ Morgan Hill ■ Pleasanton ■ Santa Rosa ■ Stockton ■ Tulare  
 Phone: 925-750-6650 Fax: 925-750-6660

<b>PAD</b>
FILE NAME: CPA-12.DWG
REVISED: MARCH 2016
<a href="http://www.oldcastleprecast.com">www.oldcastleprecast.com</a>

6'-9" X 7'-0" X 0'-8" O.D.  
 3'-0" X 6'-0" X 0'-8" O.D.  
 CITY OF PALO ALTO

Copyright © 2016 Oldcastle Precast, Inc.