

4'-6" X 8'-6" X 6'-0"  
 INCIDENTAL H-10 SPLICE ENCLOSURE  
 APPROXIMATE WEIGHTS:  
 WITHOUT COVER 17,630 LBS

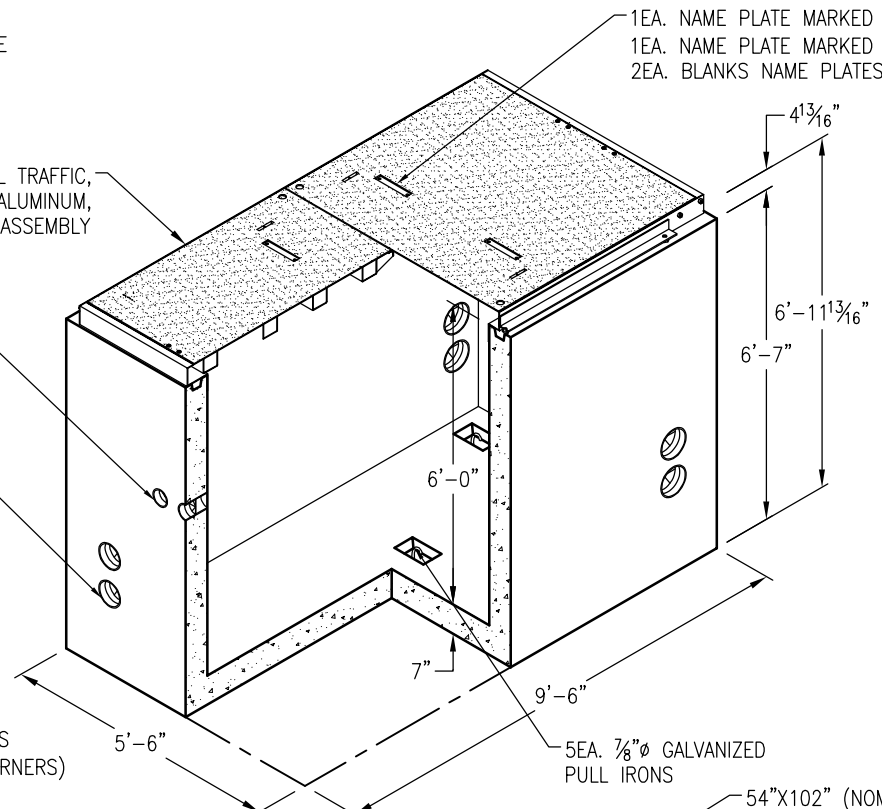
CPA-7

54"x102" (NOMINAL) INCIDENTAL TRAFFIC,  
 QUICK RELEASE, SLIP RESISTANT, ALUMINUM,  
 SPLICE COVER ASSEMBLY

3EA. 3"Ø DUCTS

16EA. 6"Ø DUCTS  
 7EA. 5"Ø DUCTS

NOT SHOWN:  
 12"Ø X4" SUMP WITH GROOVE  
 2EA. 1"Ø GROUND ROD KNOCK-OUTS  
 (LOCATED DIAGONALLY OPPOSING CORNERS)



1EA. NAME PLATE MARKED "CPA."  
 1EA. NAME PLATE MARKED "HIGH VOLTAGE"  
 2EA. BLANKS NAME PLATES

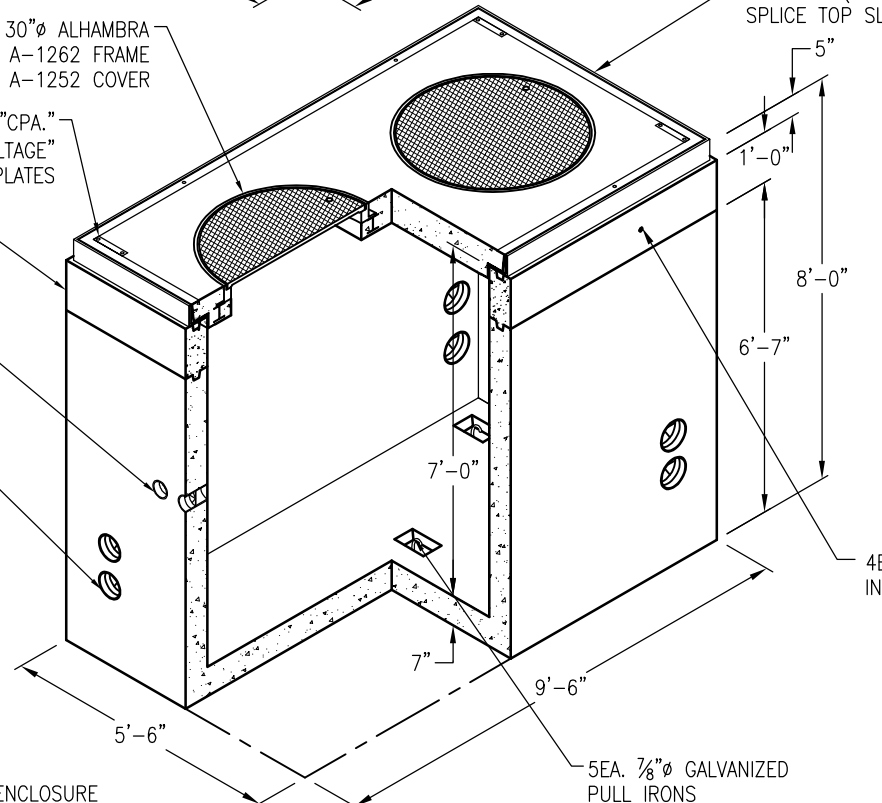
5EA. 7/8"Ø GALVANIZED  
 PULL IRONS

2EA. 30"Ø ALHAMBRA  
 A-1262 FRAME  
 A-1252 COVER  
 1EA. NAME PLATE MARKED "CPA."  
 1EA. NAME PLATE MARKED "HIGH VOLTAGE"  
 2EA. BLANKS NAME PLATES

12" EXTENSION  
 PER CPA SPECS

3EA. 3"Ø DUCTS

16EA. 6"Ø DUCTS  
 7EA. 5"Ø DUCTS



54"x102" (NOMINAL) FULL TRAFFIC,  
 SPLICE TOP SLAB ASSEMBLY

4EA. 7/8"Ø LIFTING  
 INSERTS

4'-6" X 8'-6" X 7'-0"  
 HEAVY FULL TRAFFIC H-20 SPLICE ENCLOSURE  
 APPROXIMATE ASSEMBLY  
 WEIGHT: 13,410 LBS  
 TOP SLAB WEIGHT: 3,630 LBS  
 RISER WEIGHT: 2,150 LBS  
 VAULT WEIGHT: 7,630 LBS

5EA. 7/8"Ø GALVANIZED  
 PULL IRONS

DRAWING MAY NOT CONFORM TO THE  
 MOST CURRENT SPECIFICATION