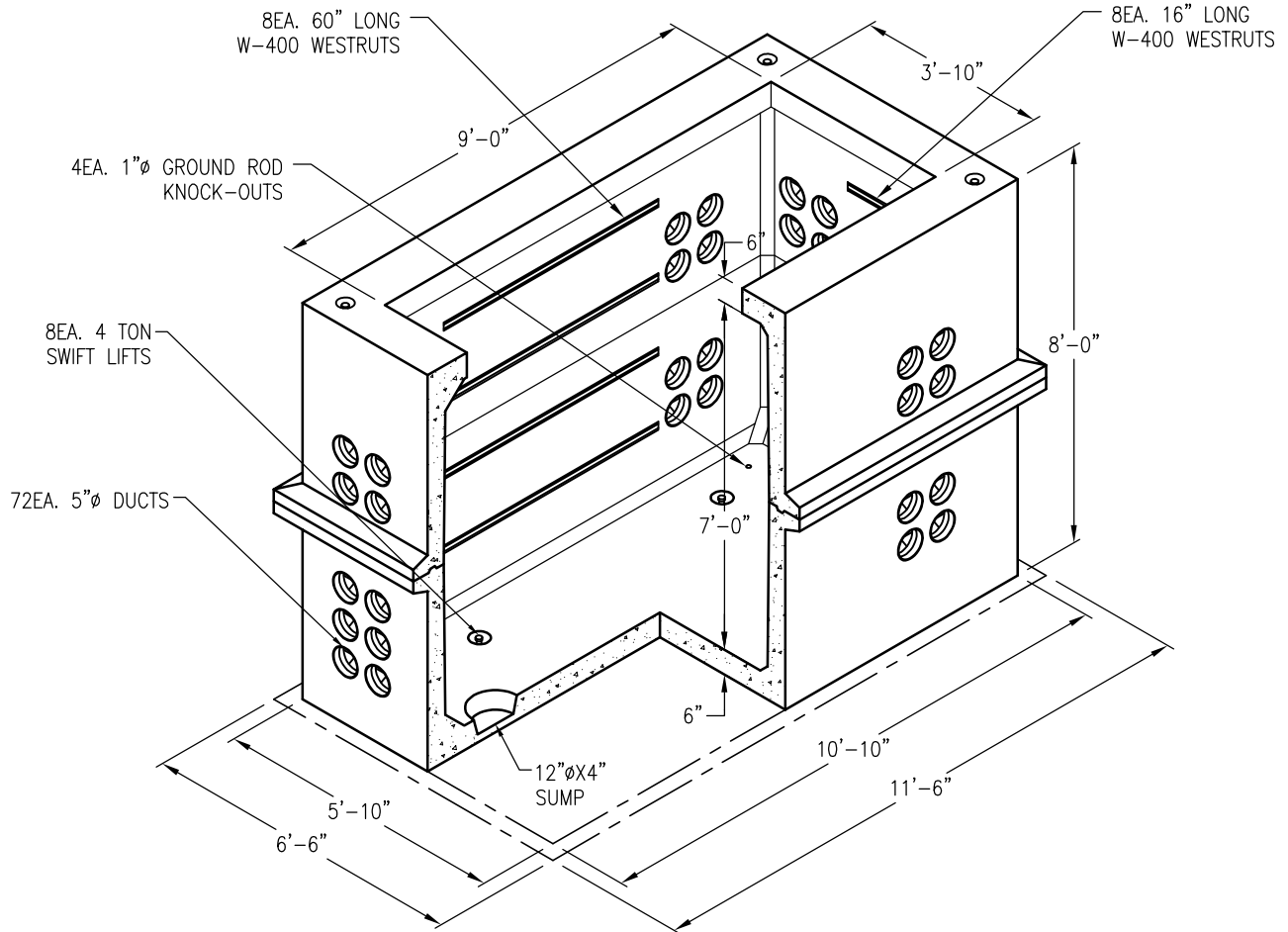


NOT SHOWN:
 $\frac{7}{8}$ " ϕ GALVANIZED PULL IRONS
 IN THE FLOOR



CONCRETE COVER WEIGHT: 5,065 LBS
 TOP SECTION WEIGHT: 9,780 LBS
 BASE SECTION WEIGHT: 11,400 LBS

DRAWING MAY NOT CONFORM TO THE
 MOST CURRENT SPECIFICATION



Oldcastle Precast[®]
 Northern California
 Madera ■ Morgan Hill ■ Pleasanton ■ Santa Rosa ■ Stockton ■ Tulare
 Phone: 925-750-6650 Fax: 925-750-6660

CPA-510
FILE NAME: CPA-8.DWG
REVISED: MARCH 2016
www.oldcastleprecast.com

5'-0" X 10'-0" X 7'-0" (I.D.)
CPA-38Y-510
CITY OF PALO ALTO