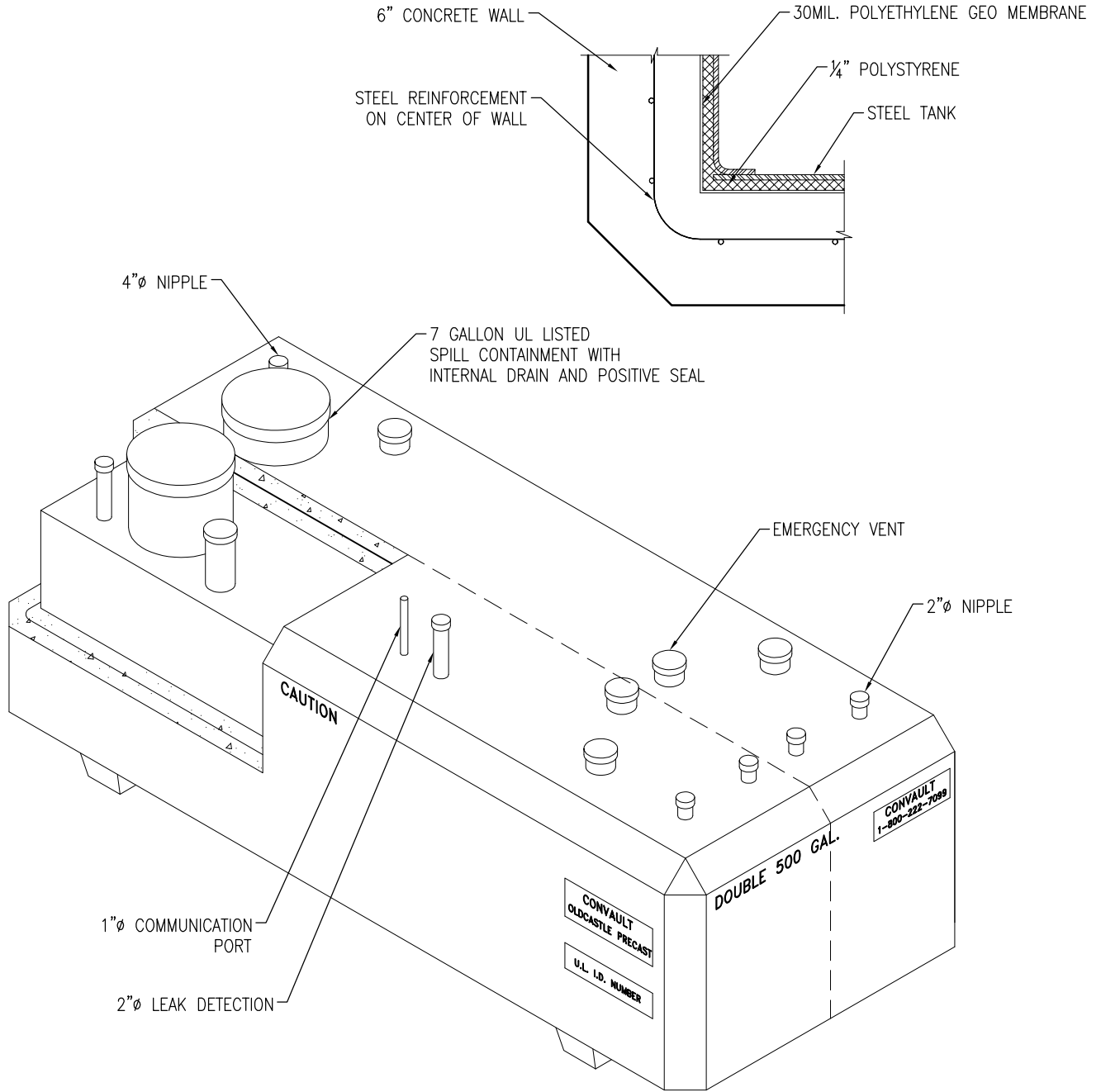


NOTE:  
CONVAULT EQUIPMENT AND LAYOUT  
VARIES TO SPECIFIC CUSTOMER NEEDS



MEETS UL2085 & UL752 LEVEL 8  
WEIGHTS COULD BE UP TO 15% MORE THAN SPECIFIED

CAPACITY	W	L	H	WEIGHT
D 250	4'-7"	11'-0"	3'-4"	12,000 LBS.
D 500	5'-9"	11'-0"	4'-4"	18,000 LBS.
D 1,000	8'-0"	11'-2"	5'-3"	30,000 LBS.
D 2,000	8'-0"	12'-2"	8'-9"	44,000 LBS.
D 3,000	8'-0"	17'-7"	8'-9"	60,000 LBS.
D 4,000	8'-0"	23'-1"	8'-9"	72,000 LBS.
D 5,000	8'-0"	28'-7"	8'-9"	87,000 LBS.
D 6,000	8'-0"	34'-1"	8'-9"	101,000 LBS.

DRAWING MAY NOT CONFORM TO THE  
MOST CURRENT SPECIFICATION

**Oldcastle Precast**<sup>®</sup>  
Northern California  
Madera ■ Morgan Hill ■ Pleasanton ■ Santa Rosa ■ Stockton ■ Tulare  
Phone: 925-750-6650 Fax: 925-750-6660

**CVT-D SPLIT**

FILE NAME: CVT-12.DWG

REVISED: MARCH 2016

[www.oldcastleprecast.com](http://www.oldcastleprecast.com)

**VARIES SPLIT COMPARTMENT  
CONVAULT  
OLDCASTLE PRECAST**

Copyright © 2016 Oldcastle Precast, Inc.