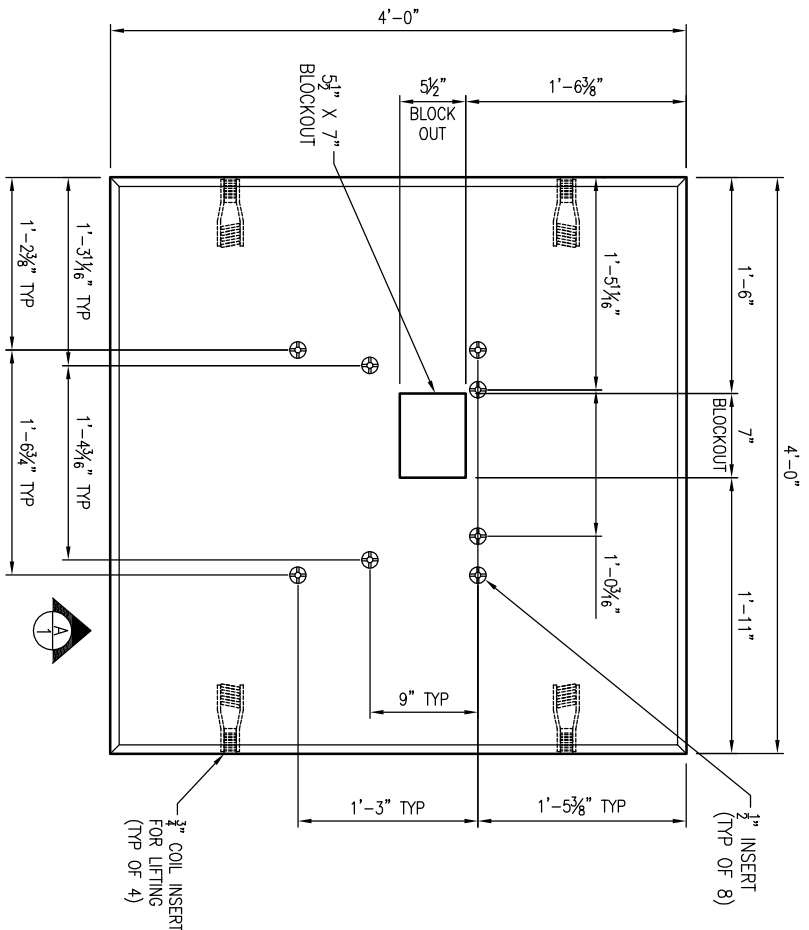
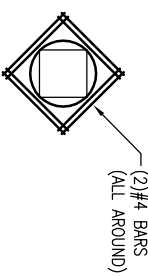


**GENERAL NOTES:**

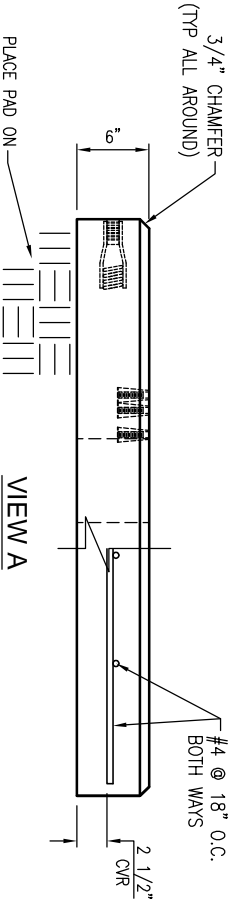
1. CONCRETE: 28 DAY COMPRESSIVE STRENGTH  $f'_c = 4,000$  PSI (MIN).
2. REINFORCING: ASTM A-615, GRADE 60.
3. SLAB DESIGNED FOR EITHER THE OPTITECH LS 288 [120 LBS] (MIN) OR LS-432 [160 LBS] (MAX) CABINETS LOAD ONLY.
4. SLAB DESIGNED FOR 150 MPH WIND LOAD, IN ACCORDANCE WITH ASCE 7-10, EXPOSURE CATEGORY C, RISK CATEGORY 2.
5. SLAB SHALL BE SUPPORTED IN ACCORDANCE WITH AT&T PROJECT SPECIFICATIONS (I.E. LEVEL AND COMPACTED BEARING SURFACE).



**PLAN VIEW**  
SCALE: 3/4" = 1'-0"



**TYPICAL REINFORCEMENT FOR OPENINGS**  
SCALE: N.T.S.



**VIEW A**  
SCALE: 3/4" = 1'-0"

1. USE EXACT BAR SIZE AND SPACING AS NOTED ABOVE.
2. ALL STEEL CUT OUT FOR OPENINGS WILL BE REPLACED, HALF REINFORCEMENT ON EACH SIDE OF OPENING. INCLUDE (2) ADDITIONAL #4 DIAGONAL BARS AROUND OPENING (SEE TYPICAL REINFORCEMENT FOR ALL OPENINGS)

**REVISIONS**

REVISION	DATE	BY	SHEET	DESCRIPTION OF REVISION	REQUESTED BY
A			1		CONTRACTOR
B					

SECTION	WEIGHTS	CONCRETE(Y)
6" SLAB	1,200	0.30

**Oldcastle Precast**  
468 STOUGH RD, CONCORD, NC  
OFFICE 704-798-4901 FAX 704-798-4900  
NC ENGINEERING LICENSE #F-1002

THIS DOCUMENT IS THE PROPERTY OF OLDCASTLE PRECAST, INC. IT IS CONFIDENTIAL, SUBMITTED FOR REFERENCE PURPOSES ONLY, AND SHALL NOT BE USED IN ANY WAY IN VIOLATION TO THE INTERESTS OF OR WITHOUT THE WRITTEN PERMISSION OF OLDCASTLE PRECAST, INC. COPYRIGHT © 2014 OLDCASTLE PRECAST, INC. ALL RIGHTS RESERVED.

**4'X4'X6" OD OPTITECH LS CABINET PAD**  
SUBMITTAL LAYOUT

FDH LS-288 & LS-432 CABINETS

CUSTOMER: **AT & T (PIN# ATT.100089339)**

DATE	SALES	DRAWN	ENGINEER	CHECKED	SALES ORDER
7/9/14	LD				

DRAWING NUMBER: ConInj-LS288-432

REVISION	REV DATE	SHEET
1		1 OF 1

