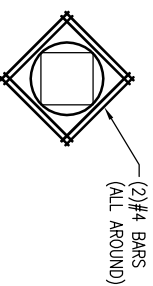
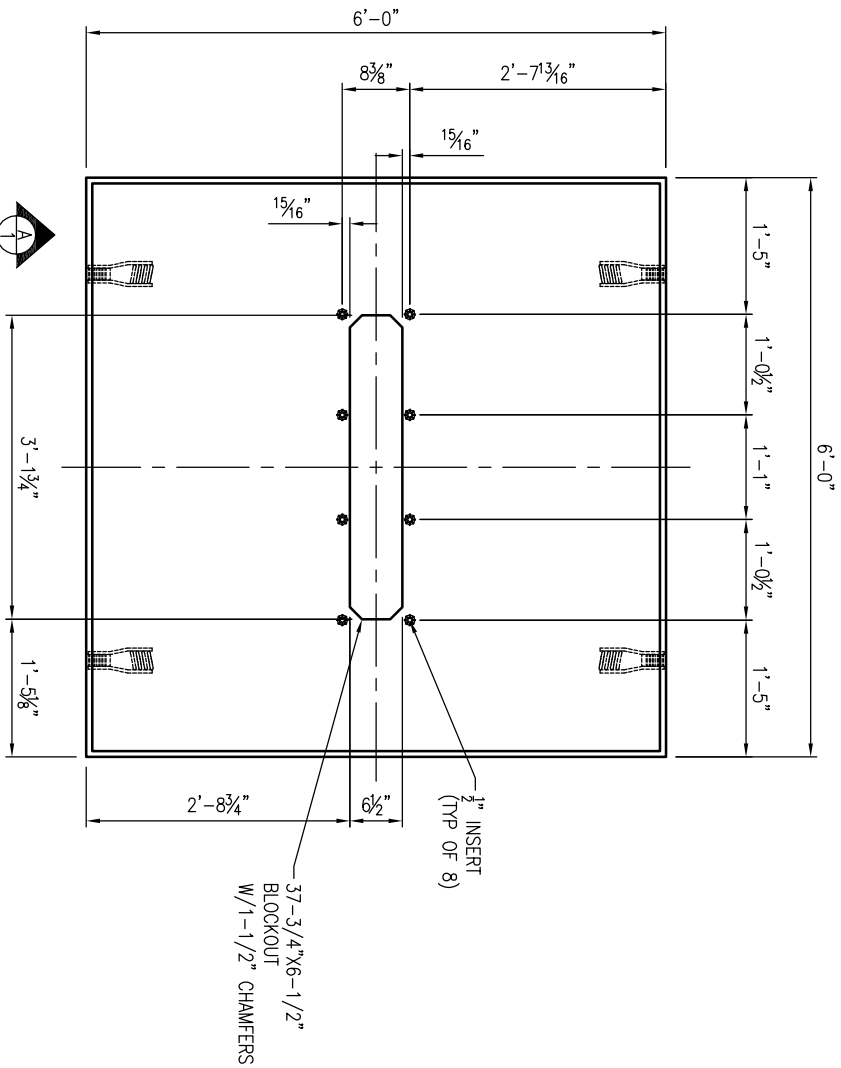


GENERAL NOTES:

1. CONCRETE: 28 DAY COMPRESSIVE STRENGTH $F_c = 4,500$ PSI (MIN).
2. REINFORCING: ASTM A-615, GRADE 60.
3. SLAB DESIGNED FOR EMERSON VPIN 1200-5400 CABINET LOAD ONLY.
4. SLAB DESIGNED FOR 150 MPH WIND LOAD, IN ACCORDANCE WITH ASCE 7-10.
5. SLAB SHALL BE SUPPORTED IN ACCORDANCE WITH AT&T PROJECT SPECIFICATIONS (I.E. LEVEL AND COMPACTED BEARING SURFACE).



VIEW-A
SCALE: 1/2" = 1'-0"

1. USE EXACT BAR SIZE AND SPACING AS NOTED ABOVE.

ALL STEEL CUT OUT FOR OPENINGS WILL BE REPLACED. HALF REINFORCEMENT ON EACH SIDE OF OPENING. INCLUDE (2) ADDITIONAL #4 DIAGONAL BARS AROUND OPENING (SEE TYPICAL REINFORCEMENT FOR ALL OPENINGS)

REVISIONS

REVISION	DATE	BY	SHEET	DESCRIPTION OF REVISION	REQUESTED BY
A	5/14/2013	LD	1	ADDED AT&T PIN NUMBER TO TITLEBLOCK	CONTRACTOR
B					

SECTION	WEIGHT (lb)	Concrete(C)
TOTAL	2,400	0.59

oldcastle Precast
 4905 South Road, Concord, NC
 704-784-4000 (704) 784-4000

THIS DOCUMENT IS THE PROPERTY OF OLDCASTLE PRECAST, INC. IT IS CONFIDENTIAL, SUBMITTED FOR REFERENCE PURPOSES ONLY, AND SHALL NOT BE USED IN ANY WAY INJURIOUS TO THE INTERESTS OF, OR WITHOUT THE WRITTEN PERMISSION OF OLDCASTLE PRECAST, INC. COPYRIGHT © 2013 OLDCASTLE PRECAST, INC. ALL RIGHTS RESERVED.

6X6X6" OD VPIN EMERSON 1200-5400 PAD
 SUBMITTAL LAYOUT

CUSTOMER: AT & T (PIN# ATT. 100002514)

DATE	SALES	DRAWN	ENGINEER	CHECKED	SALES ORDER
8/24/14	---	---	---	---	---

DRAWING NUMBER: EMERSON VPIN 1200-5400

REVISION	SHEET
A	1 OF 1