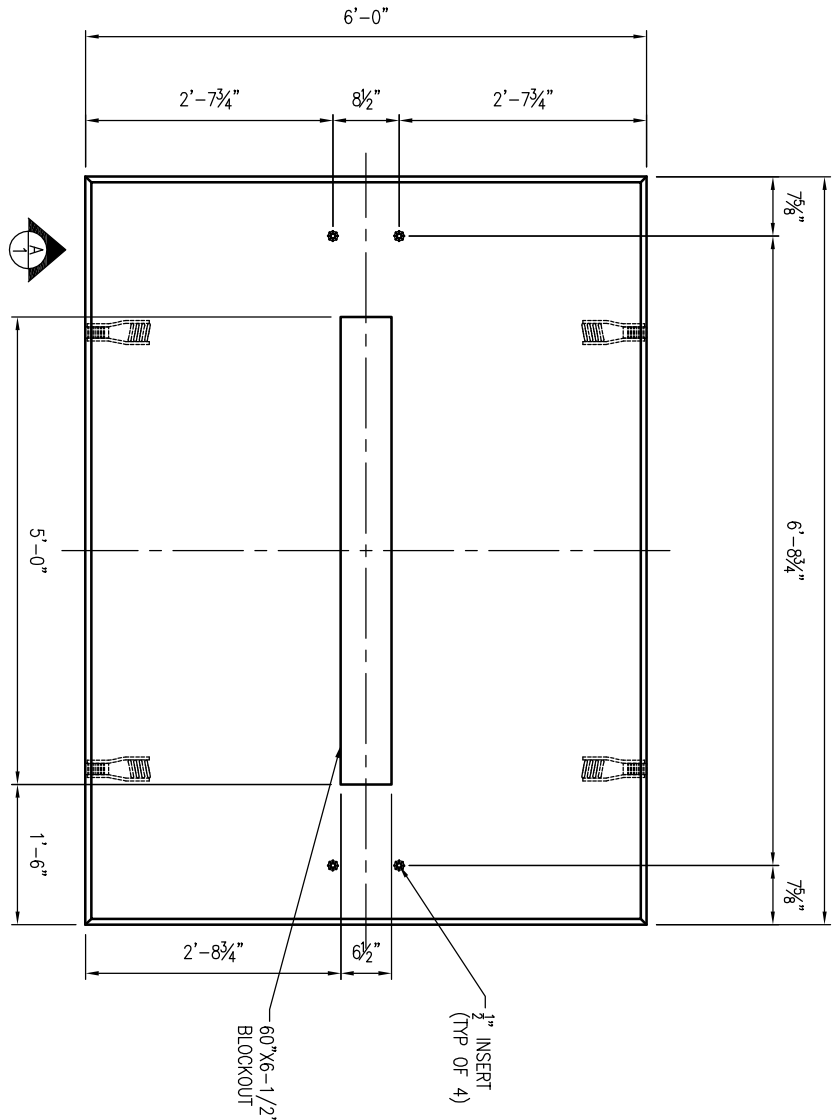
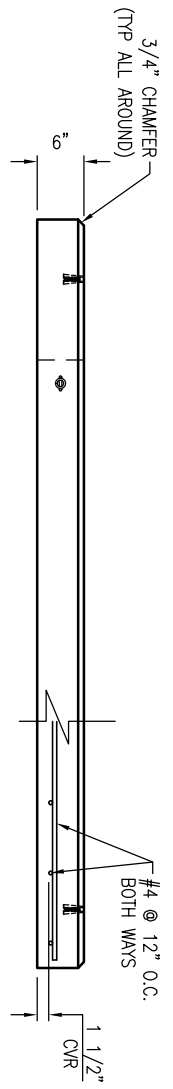


8'-0"



PLAN VIEW
SCALE: 1/2" = 1'-0"



VIEW-A
SCALE: 1/2" = 1'-0"

TYPICAL REINFORCEMENT FOR OPENINGS
SCALE: N.T.S.

1. USE EXACT BAR SIZE AND SPACING AS NOTED ABOVE.
2. ALL STEEL CUT OUT FOR OPENINGS WILL BE REPLACED. HALF REINFORCEMENT ON EACH SIDE OF OPENING. INCLUDE (2) ADDITIONAL #4 DIAGONAL BARS AROUND OPENING (SEE TYPICAL REINFORCEMENT FOR ALL OPENINGS)

REVISIONS

REVISION	DATE	BY	SHEET	DESCRIPTION OF REVISION	REQUESTED BY
A	5/14/2013	LD	1	ADDED AT&T PIN NUMBER TO TITLER LOCK	CONTRACTOR
B					

GENERAL NOTES:

1. CONCRETE: 28 DAY COMPRESSIVE STRENGTH F_c' = 4,500 PSI (MIN).
2. REINFORCING: ASTM A-615, GRADE 60.
3. SLAB DESIGNED FOR EMERSON VPV 36-72LP CABINET LOAD ONLY.
4. SLAB DESIGNED FOR 150 MPH WIND LOAD, IN ACCORDANCE WITH ASCE 7-10.
5. SLAB SHALL BE SUPPORTED IN ACCORDANCE WITH AT&T PROJECT SPECIFICATIONS (I.E. LEVEL AND COMPACTED BEARING SURFACE).

SECTION	WEIGHT	Volume(CY)
TOTAL	3,400	0.84

Oldcastle Precast
466 STOUGH RD. CONCORD, NC
OFFICE 704-778-4080, FAX 704-778-4080

THIS DOCUMENT IS THE PROPERTY OF OLDCASTLE PRECAST, INC. IT IS CONFIDENTIAL. UNAUTHORIZED REPRODUCTION OR DISSEMINATION OF THIS DOCUMENT IS STRICTLY PROHIBITED. ALL RIGHTS RESERVED. COPYRIGHT © 2013 OLDCASTLE PRECAST, INC. ALL RIGHTS RESERVED.

6"X8"X6" OD VPV EMERSON 36/72 LP PAD
SUBMITTAL LAYOUT

CUSTOMER				SALES ORDER	
AT & T (PIN# ATT: 100002512)					
DATE	SALES	DRAWN	ENGINEER	CHECKED	
6/24/14	---	---	---	---	
DRAWING NUMBER			REVISION		
EMERSON VPV 36-72LP			A		
			REV DATE		
			05/14/13		
			1 OF 1		