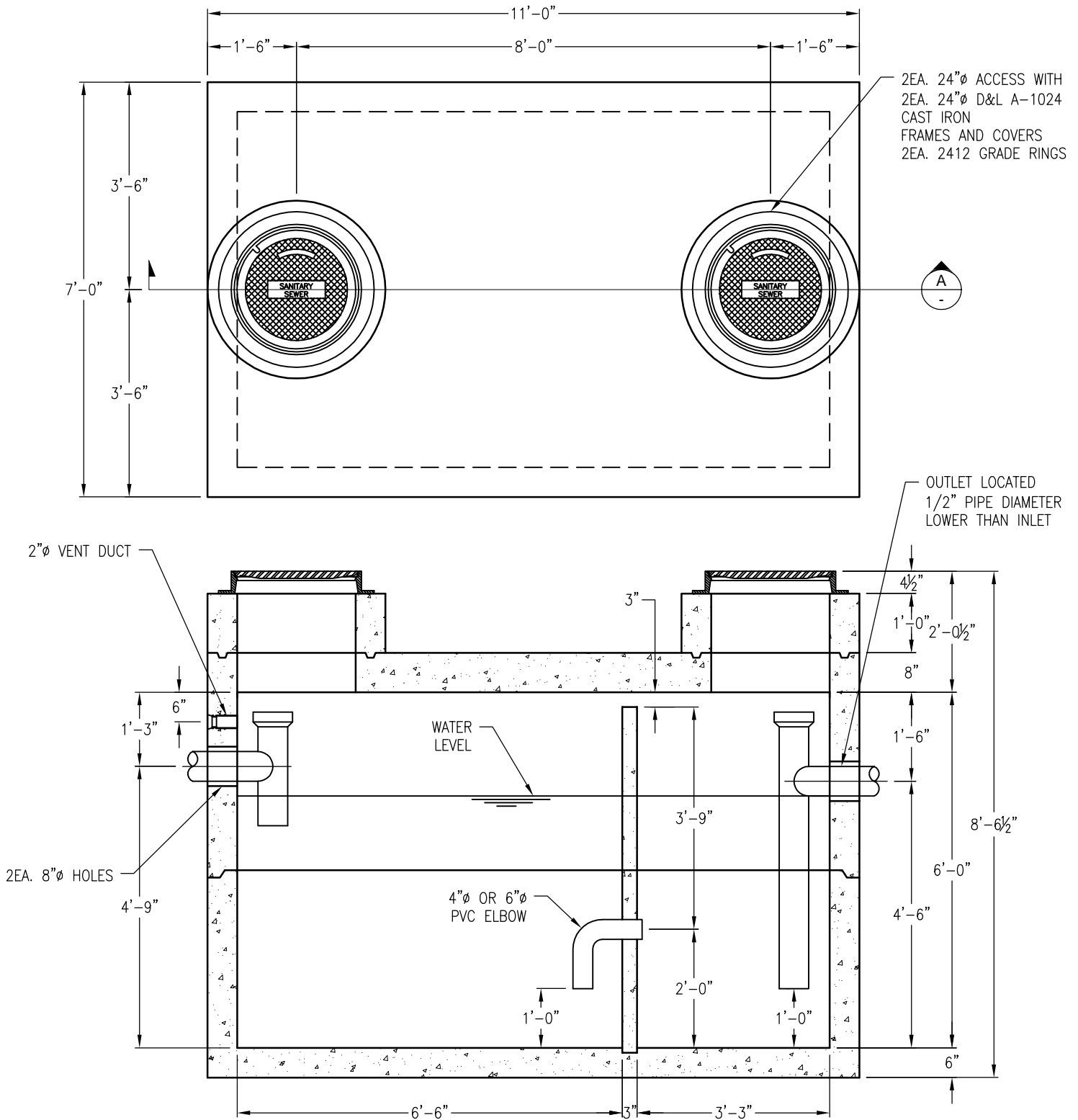


1,900 TOTAL GALLON GREASE INTERCEPTOR
 CUSTOMER TO SUPPLY PIPES AND TEES.
 PIPING SHOWN FOR REFERENCE ONLY.

ENV-12



TOP SECTION WEIGHT: 14,700 LBS.
 BASE SECTION WEIGHT: 13,700 LBS.

DRAWING MAY NOT CONFORM TO THE
 MOST CURRENT SPECIFICATION



Oldcastle Precast[®]
 Northern California
 Madera ■ Morgan Hill ■ Pleasanton ■ Santa Rosa ■ Stockton ■ Tulare
 Phone: 925-750-6650 Fax: 925-750-6660

GI-610
FILE NAME: ENV-12.DWG
REVISED: MARCH 2016
www.oldcastleprecast.com

**6'-0" X 10'-0" X 6'-0" (I.D.)
 ENVIRONMENTAL VAULT
 GREASE INTERCEPTOR**

Copyright © 2016 **Oldcastle** Precast, Inc.