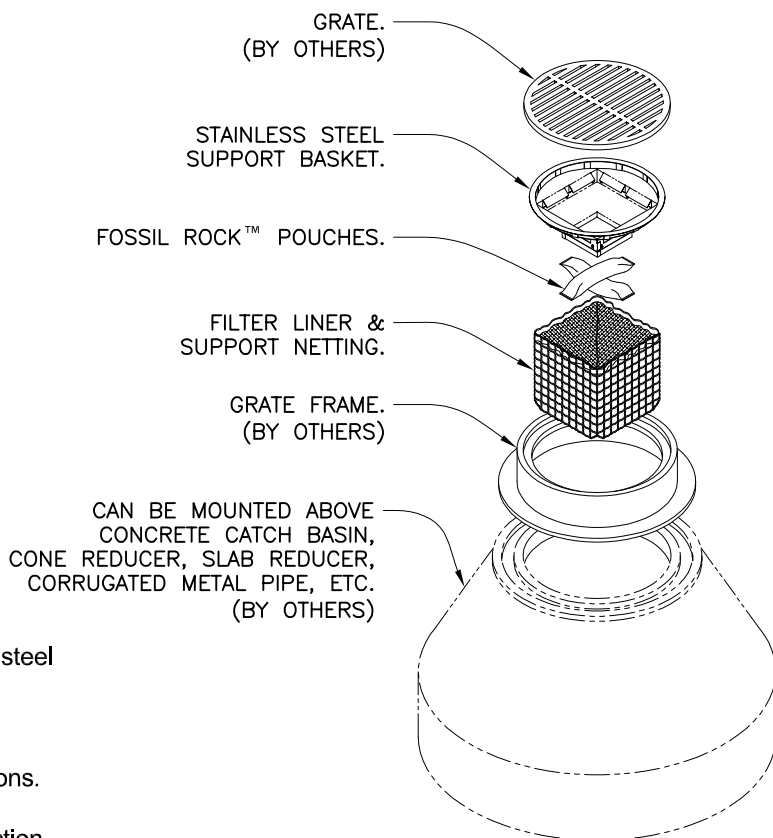
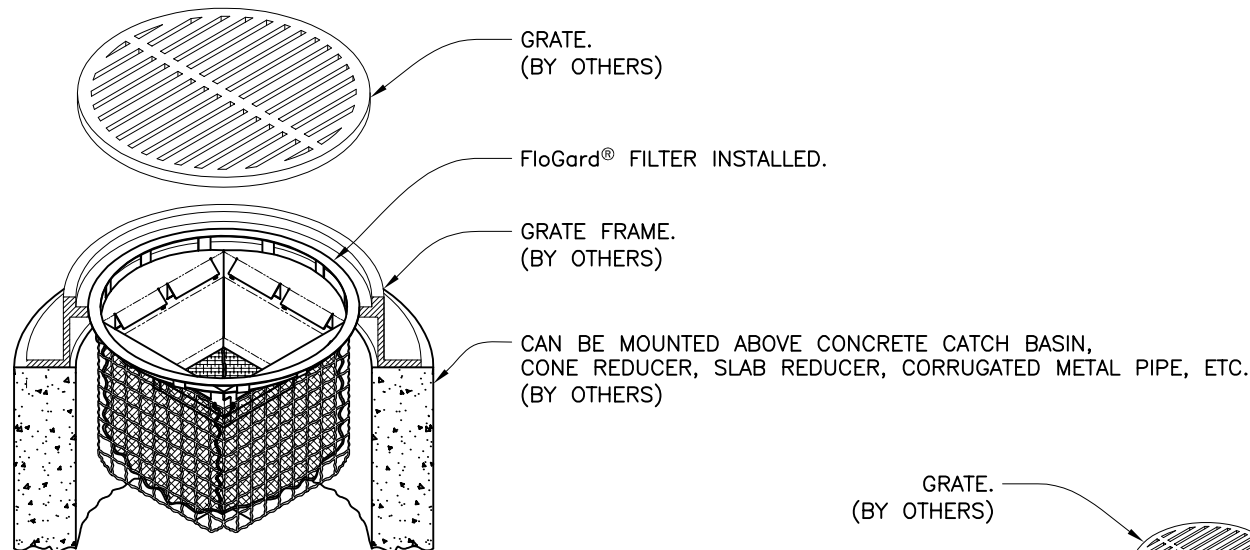


SPECIFIER CHART

MODEL NUMBER	INLET ID (Ø INCHES)	GRATE OD (Ø INCHES)	SOLIDS STORAGE CAPACITY (CU FT)	FILTERED FLOW (CFS)	TOTAL BYPASS CAPACITY (CFS)
FGP-RF15F	16	18	0.3	0.4	2.8
FGP-RF18F	18	20	0.8	0.7	4.7
FGP-RF20F	20	23	0.8	0.7	4.7
FGP-RF21F	21	23.5	0.8	0.7	4.7
FGP-RF22F	22	24	0.8	0.7	4.7
FGP-RF24F	24	26	0.8	0.7	4.7
FGP-RF30F	30	32	2.2	1.5	6.1
FGP-RF36F	36	39	3.6	2.0	8.1



EXPLODED VIEW

SCALE: 1/2

NOTES:

1. Filter insert shall have a high flow bypass feature.
2. Filter support frame shall be constructed from stainless steel Type 304.
3. Filter medium shall be *Fossil Rock™*, installed and maintained in accordance with manufacturer specifications.
4. Storage capacity reflects 80% of maximum solids collection prior to impeding filtering bypass.



Inlet Filtration

FloGard®
Catch Basin Insert Filter
Circular Frame Style



Oldcastle®
Stormwater Solutions

7921 Southpark Plaza, Suite 200 | Littleton, CO | 80120 | Ph: 800.579.8819 | oldcastlestormwater.com
 THIS DOCUMENT IS THE PROPERTY OF OLDCASTLE PRECAST, INC. IT IS SUBMITTED FOR REFERENCE PURPOSES ONLY AND SHALL NOT BE USED IN ANY WAY INJURIOUS TO THE INTERESTS OF SAID COMPANY. COPYRIGHT © 2010 OLDCASTLE PRECAST, INC. ALL RIGHTS RESERVED.

DRAWING NO. FGP-0003	REV D	ECO ECO-0142	DATE JPR 7/13/16	DATE JPR 4/4/07	SHEET 1 OF 1
-------------------------	----------	-----------------	---------------------	--------------------	--------------