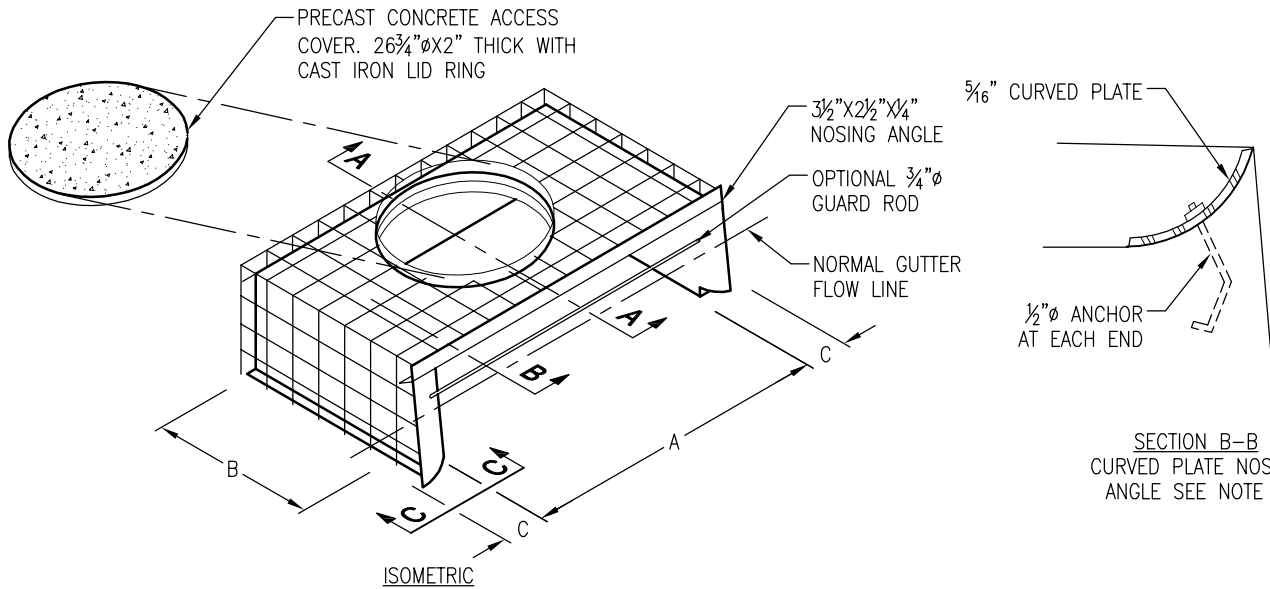


NOTES:

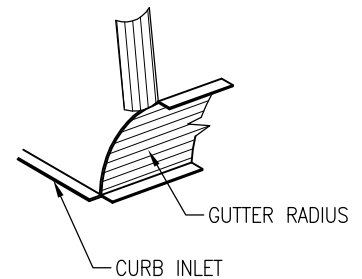
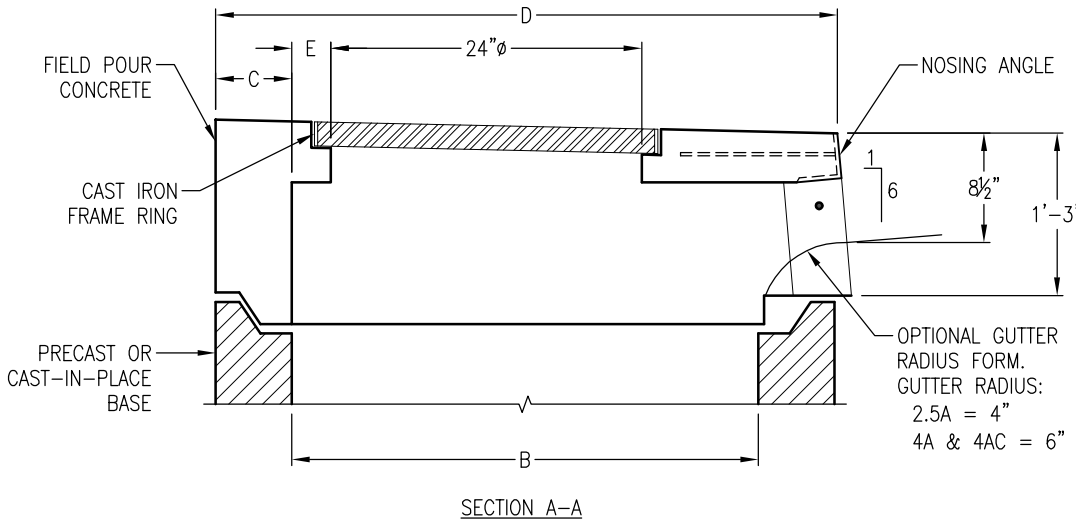
1. FOR TYPICAL CURB INLET INSTALLTION AND PRECAST BASE INFORMATION NOT SHOWN SEE CURB INLET DRAWINGS.
2. MAXIMUM GUTTER SLOPE WITHOUT AND UP-STREAM GALLERY SHOULD NOT EXCEED 6% FOR FIBERGLASS GALLERY FORMS, SEE DRAWING 6Y-12Y, PAGE FIB-2.
3. OPTIONAL CAST IRON FRAME AND ACCESS COVER ARE AVAILABLE UPON REQUEST.
4. CURVED PLATE NOSING ANGLE IS OPTIONAL ON 4AC MODEL ONLY.
5. CONTRACTOR TO SHIM BACK JOINT TO CREATE TOP SLOP.
6. SHIPPING WEIGHT FOR GUARD ROD:
 - 6.1. 2.5A MODEL = 5 LBS
 - 6.2. 4A & 4AC MODELS = 8 LBS

MODEL NUMBER	DIMENSIONS					WEIGHT LBS
	A	B	C	D	E	
2.5A	30	24	4	31	0	44
4A	48	24	5	32	0	64
4AC	48	36	5	48	3	90

WEIGHT OF COVER IS 100 LBS
SEE NOTE 4 FOR 4A & 4AC MODELS



SECTION B-B
CURVED PLATE NOSING
ANGLE SEE NOTE 4



SECTION C-C
OPTIONAL FIBERGLASS
BUTTER RADIUS FORM

DRAWING MAY NOT CONFORM TO THE MOST CURRENT SPECIFICATION

Oldcastle Precast[®]
Northern California
Madera ■ Morgan Hill ■ Pleasanton ■ Santa Rosa ■ Stockton ■ Tulare
Phone: 925-750-6650 Fax: 925-750-6660

FIBERGLASS INLET

FILE NAME: FIB-1.DWG

REVISED: MARCH 2016

www.oldcastleprecast.com

**2.5A, 4A, & 4AC PELICAN
CURB INLET TOPS
FIBERGLASS COMPONENTS**

Copyright © 2016 **Oldcastle** Precast, Inc.