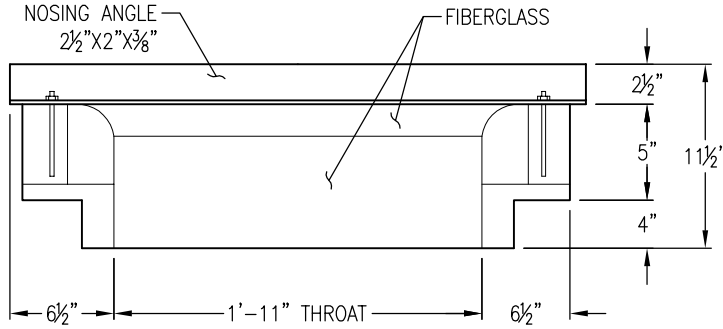
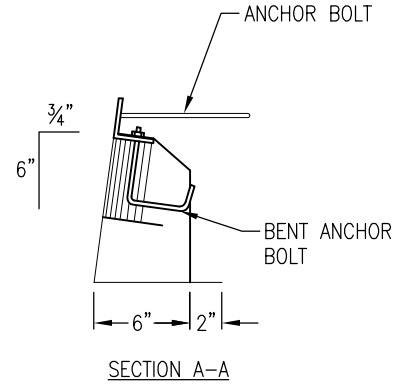


**NOTES:**

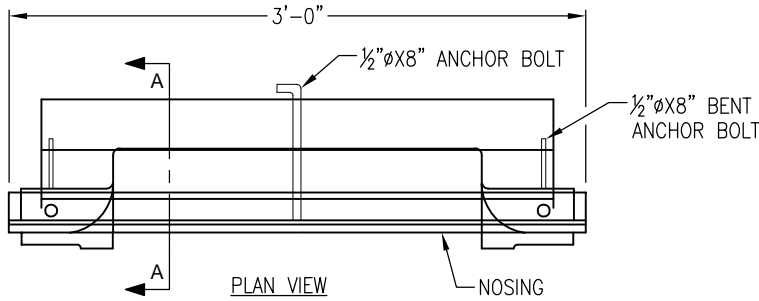
1. ALL METAL PARTS SHALL BE HOT DIPPED GALVANIZED.
2. A2 HOOD COLOR IS LIGHT GRAY.
3. CAST IRON FRAME AND GRATE SHOWN IS D&L FOUNDRY MODEL I-3601 AS APPROVED FOR USE BY THE CITY OF SAN JOSE. OPTIONAL WELDED STEEL FRAME AND GRATE IS AVAILABLE. INSTALL FRAMES TIGHT AGAINST FACE OF A2 HOOD.
4. INLET BASE MAY BE FIELD POURED OR PRECAST AS REQUIRED. BASE SHOWN IS OLDCASTLE PRECAST 24"X24" DROP INLET, SEE PAGE DD-3.



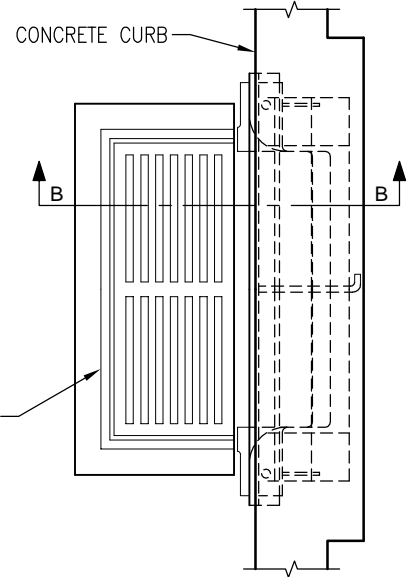
FRONT VIEW



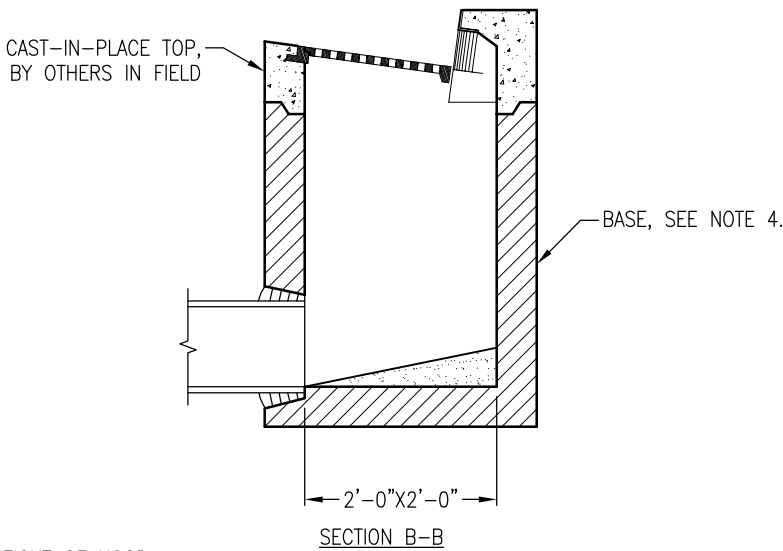
SECTION A-A



PLAN VIEW



A2 INLET HOOD PLAN



SECTION B-B

WEIGHT OF HOOD:  
23 LBS

DRAWING MAY NOT CONFORM TO THE  
MOST CURRENT SPECIFICATION

**Oldcastle Precast**<sup>®</sup>  
Northern California  
Madera ■ Morgan Hill ■ Pleasanton ■ Santa Rosa ■ Stockton ■ Tulare  
Phone: 925-750-6650 Fax: 925-750-6660

**A2 HOOD INLET**

FILE NAME: FIB-3.DWG

REVISED: MARCH 2016

[www.oldcastleprecast.com](http://www.oldcastleprecast.com)

**A2 PELICAN INLET  
HOOD LINER  
FIBERGLASS COMPONENTS**

Copyright © 2016 Oldcastle<sup>®</sup> Precast, Inc.