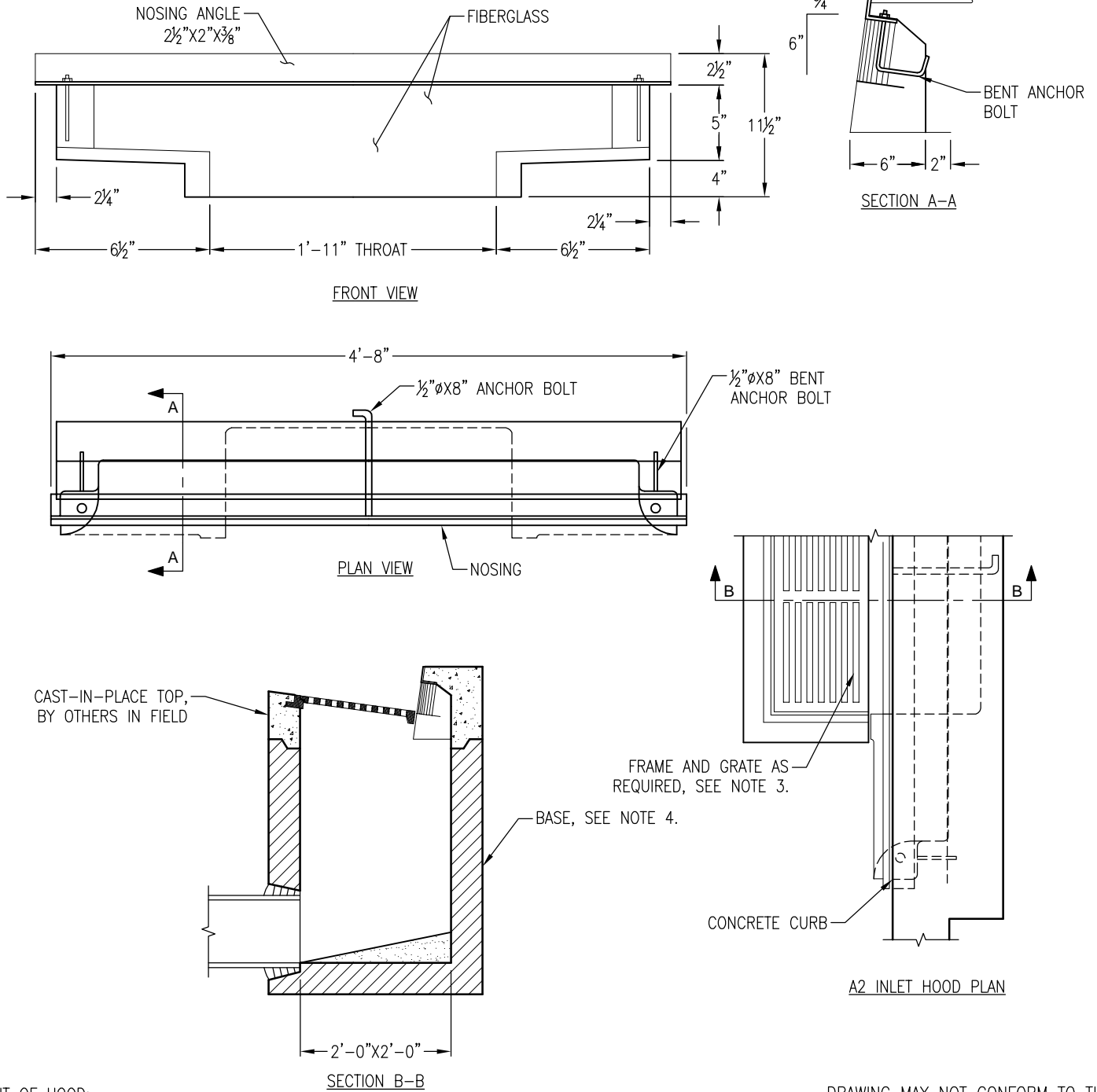


NOTES:

1. ALL METAL PARTS SHALL BE HOT DIPPED GALVANIZED.
2. A4 HOOD COLOR IS LIGHT GRAY.
3. CAST IRON FRAME AND GRATE SHOWN IS D&L FOUNDRY MODEL I-3601 AS APPROVED FOR USE BY THE CITY OF SAN JOSE. OPTIONAL WELDED STEEL FRAME AND GRATE IS AVAILABLE. INSTALL FRAMES TIGHT AGAINST FACE OF A4 HOOD.
4. INLET BASE MAY BE FIELD POURED OR PRECAST AS REQUIRED. BASE SHOWN IS OLDCASTLE PRECAST 24"X24" DROP INLET, SEE PAGE DD-3.



WEIGHT OF HOOD:
32 LBS

DRAWING MAY NOT CONFORM TO THE
MOST CURRENT SPECIFICATION