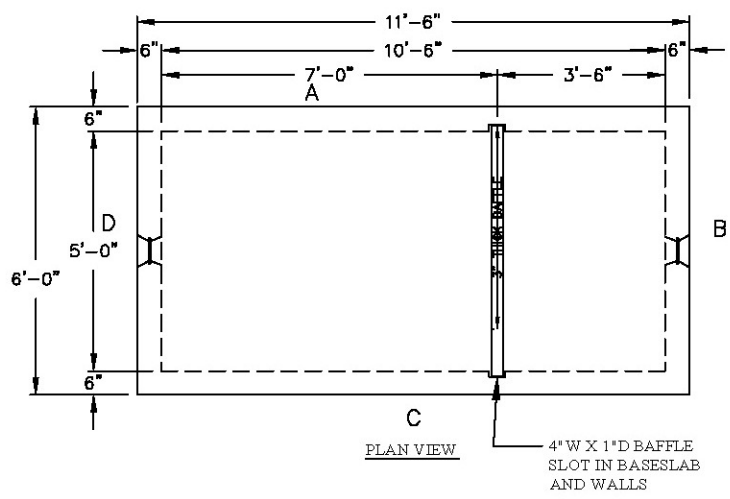
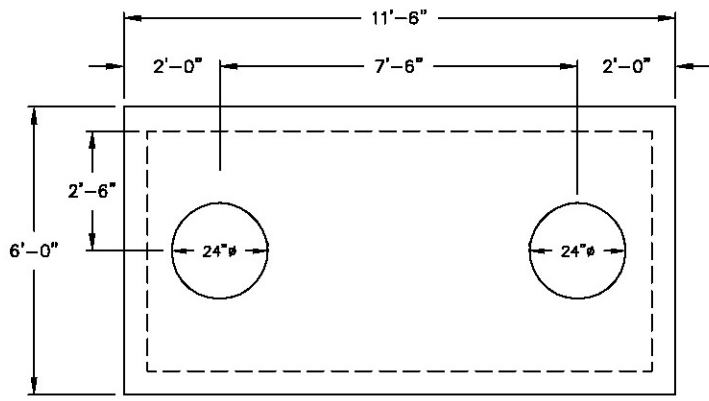


H2O-2,000 gal.



PLAN VIEW
4\"/>

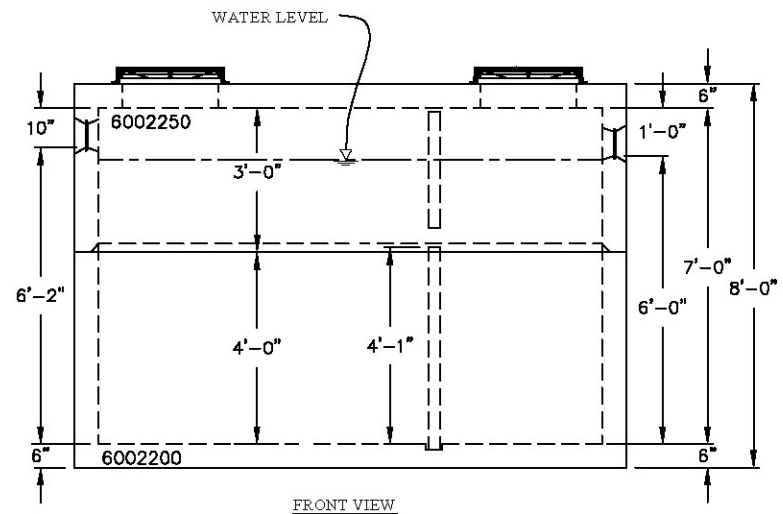


MONO - TOP DETAIL

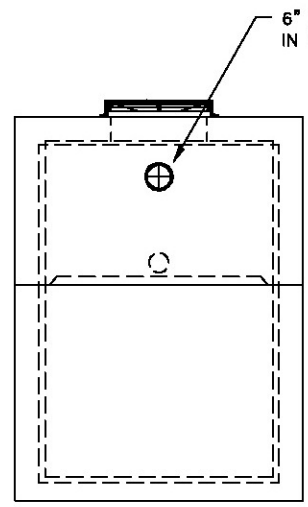
- NOTES:**
1. CONCRETE: 28 DAY COMP. STRENGTH F'C = 4,000 PSL
 2. PRECAST STRUCTURES ARE PRODUCED TO MEET OR EXCEED ASTM SPECIFICATIONS.
 3. SUPPORTS AN H2O LOADING AS INDICATED BY AASHTO.
 4. CONTRACTOR TO VERIFY SIZE AND LOCATION OF ALL OPENINGS.
 5. ALL INTERNAL PIPING DONE BY OTHERS - NOT OLD CASTLE
 6. STATE APPROVAL
#48-106-16D-C4
(F.A.C.) 64C-6.013
FLORIDA ADMINISTRATION CODE
(F-BC) SECTION 1003.4 THRU
SECTION 1003.4.2.2 AND
FLORIDA ADMINISTRATION CODE

STAMP MUST APPEAR IN
UPPER RIGHT HAND
CORNER ON WALL D 6"
DOWN FROM TOP OF TOP
SLAB

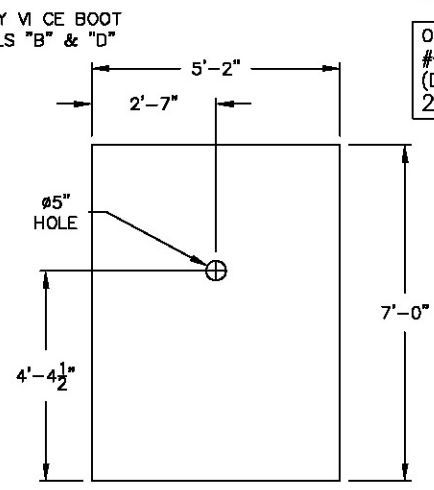
OLDCASTLE PRECAST
#48-106-16D-C4
(DATE)
2000 GAL



FRONT VIEW



SIDE VIEW



3\"/>

STRUCTURE TYPE - 2000 GALLON GREASE TRAP - 60\"/>

Oldcastle™ Precast Inc.
690 WEST TAFT-VINELAND RD. ORLANDO FL 32824
(407) 855-7580 • FAX: (407) 855-2424

DRAWN: SJW	DATE: 02/28/07	
CHECKED:	DATE:	
PRODUCED:	SHIPPED:	
STR. NO.: 2000gal	S.O. NO.: 00000	LN. NO.:
DRAWING NO.:	LOC.:	
SCALE: 1"=4'	SHEET: 1 OF 1	

WALLS	PIPE SIZE	PIPE INVERT	HOLE SIZE	HOLE UP	PRODUCTION YARDAGE	WEIGHTS	REINFORCEMENT
B	--	+3.50	6" RUBBER BOOT	3'-6"	BASE:		
D	--	+3.66	6" RUBBER BOOT	3'-8"	WALL:		
					TOP:		
BAFFLE	--	+2.58	5"Ø	2'-7"	BAFFLE:		
					REMARKS:		
					CASTING:		
					STEEL WT.:		CONC. WT.:

PROPERTY OF OLDCASTLE PRECAST, NOT TO BE REPRODUCED WITHOUT WRITTEN CONSENT, 2005