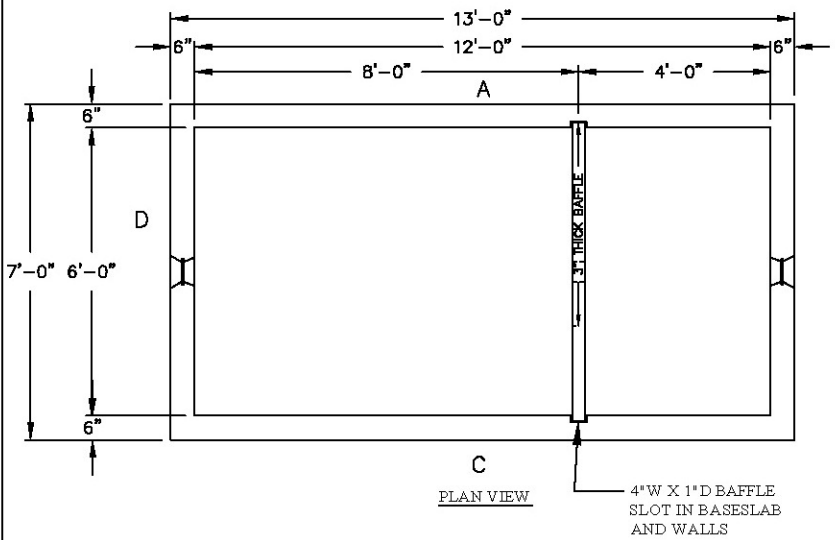
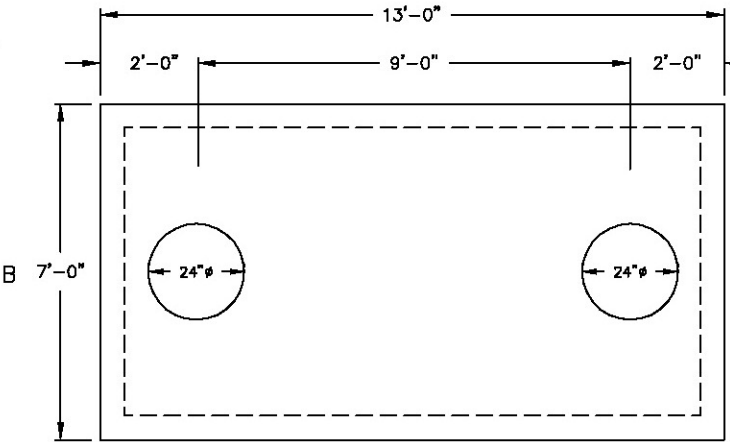


H2O-3,000 gal.

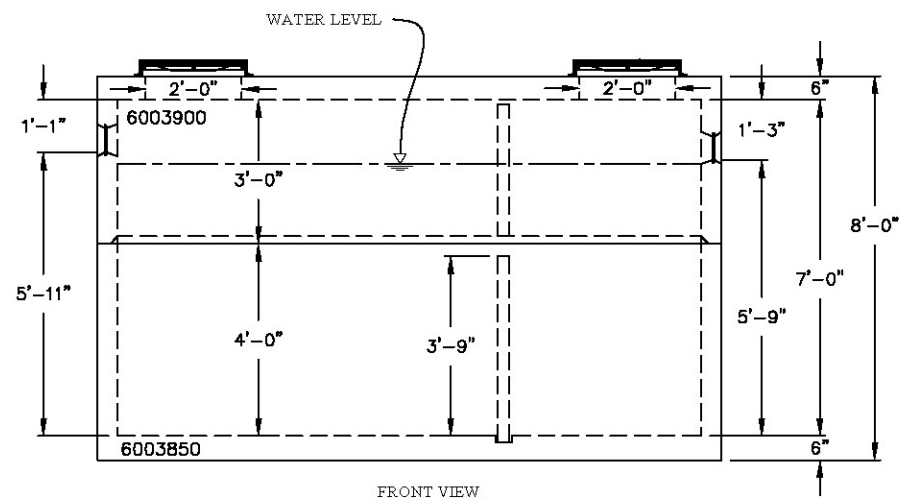


PLAN VIEW

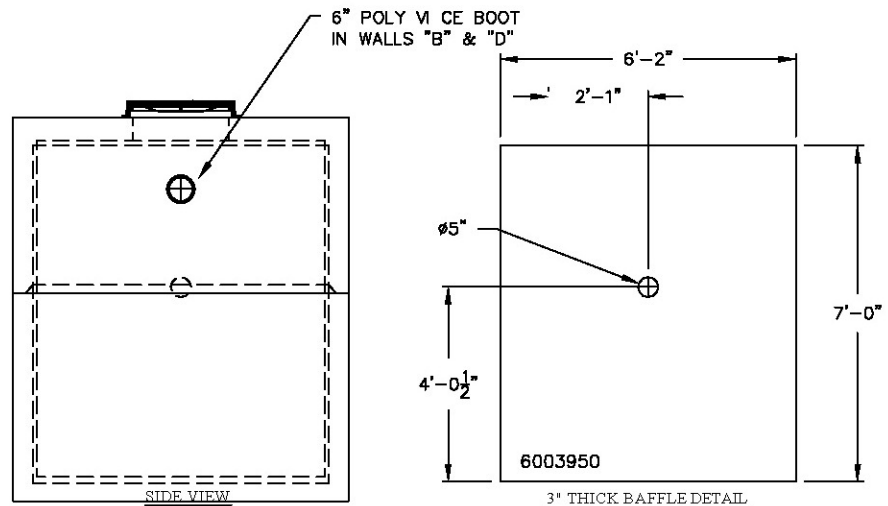


MONO - TOP DETAIL

- NOTES:**
1. CONCRETE: 28 DAY COMP. STRENGTH F'C = 4,500 PSI.
 2. REINFORCING: ASTM A-815, GRADE 60.
 3. SUPPORTS AN H2O LOADING AS INDICATED BY AASHTO.
 4. CONTRACTOR TO VERIFY SIZE AND LOCATION OF ALL OPENINGS.
 5. ALL INTERNAL PIPING DONE BY OTHERS - NOT OLD CASTLE



FRONT VIEW



SIDE VIEW

3" THICK BAFFLE DETAIL

STRUCTURE TYPE - 3000 GALLON GREASE TRAP - 72"x144"x84" (H2O RATED)

Oldcastle™ Precast Inc.
 690 WEST TAFT-VINELAND RD. ORLANDO FL 32824
 (407) 855-7580 • FAX: (407) 855-2424

DRAWN: RENE	DATE: 02/28/07	
CHECKED:	DATE:	
PRODUCED:	SHIPPED:	
STR. NO.: 3,000gal	S.O. NO.: 00000	LN. NO.:
DRAWING NO.:	LOC.:	
SCALE: 1"=4'	SHEET: 1 OF 1	

WALLS	PIPE SIZE	PIPE INVERT	HOLE SIZE	HOLE UP	PRODUCTION YARDAGE	WEIGHTS	REINFORCEMENT
B	--	+5.75	6" RUBBER BOOT	5'-9"	BASE:		
D	--	+5.92	6" RUBBER BOOT	5'-0"	WALL:		
					BASE:		
BAFFLE	--	+3.75	5"φ	3'-9"	BAFFLE:		#4 @ 10 OCEW
REMARKS:					CASTING:		
					STEEL WT.:		CONC. WT.:

PROPERTY OF OLDCASTLE PRECAST, NOT TO BE REPRODUCED WITHOUT WRITTEN CONSENT, 2005 ©