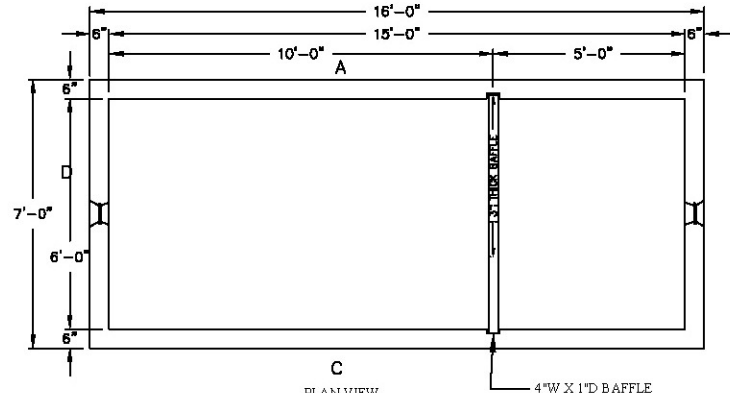
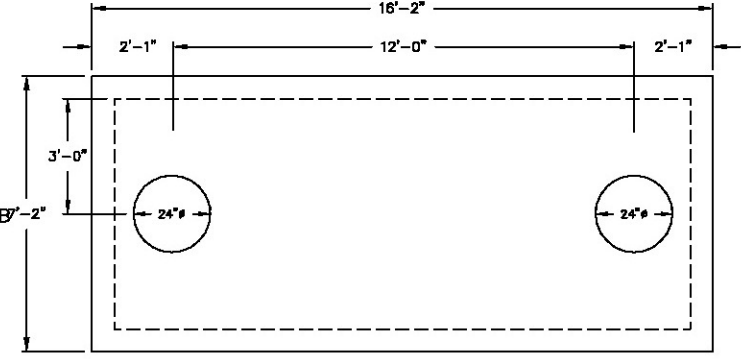


H2O-4,000 gal.

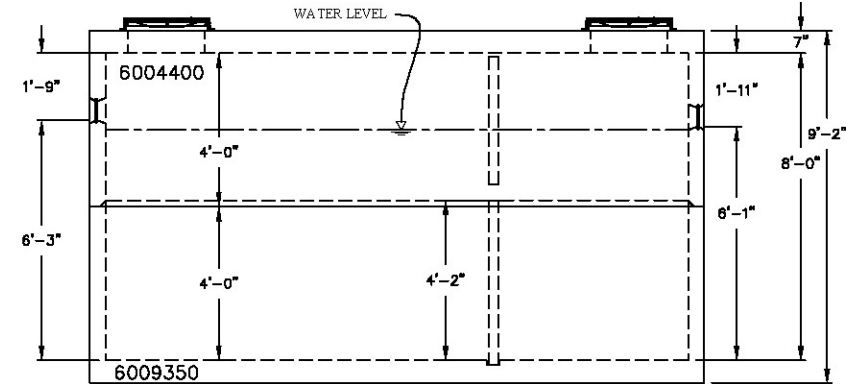
- NOTES:**
1. CONCRETE: 28 DAY COMP. STRENGTH F'C = 4,000 PSI.
 2. PRECAST STRUCTURES ARE PRODUCED TO MEET OR EXCEED ASTM SPECIFICATIONS.
 3. SUPPORTS AN H2O LOADING AS INDICATED BY AASHTO.
 4. CONTRACTOR TO VERIFY SIZE AND LOCATION OF ALL OPENINGS.
 5. ALL INTERNAL PIPING DONE BY OTHERS - NOT OLD CASTLE



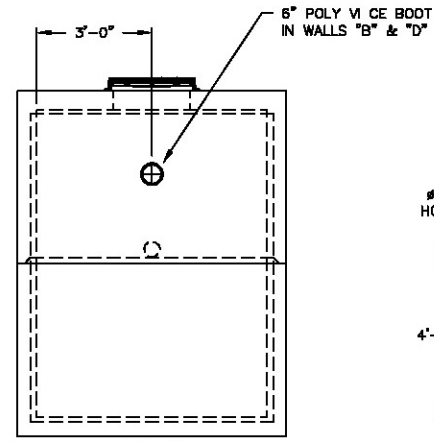
PLAN VIEW



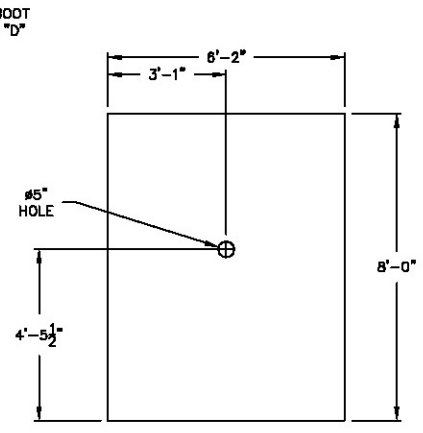
MONO - TOP DETAIL



FRONT VIEW



SIDE VIEW



3" THICK BAFFLE DETAIL
6004450

STRUCTURE TYPE - 4000 GALLON GREASE TRAP - 72"X180"X96" (H2O RATED)

Oldcastle™ Precast Inc.
690 WEST TAFT-VINELAND RD. ORLANDO FL 32824
(407) 855-7580 • FAX: (407) 855-2424

DRAWN: RENE	DATE: 02/28/07
CHECKED:	DATE:
PRODUCED:	SHIPPED:
STR. NO.: 4,000gal	S.O. NO.: 00000
LN. NO.:	DRAWING NO.:
SCALE: 1" = 5'	LOC.:
SHEET: 1 OF 1	

WALLS	PIPE SIZE	PIPE INVERT	HOLE SIZE	HOLE UP	PRODUCTION YARDAGE	WEIGHTS	REINFORCEMENT
B	--	+6.08	6" RUBBER BOOT	6'-1"	BASE:		
D	--	+6.25	6" RUBBER BOOT	6'-3"	WALL:		
					TOP:		
BAFFLE	--	+4.16	5"ø	4'-2"	BAFFLE:		
					REMARKS:	CASTING:	
						STEEL WT.:	CONC. WT.:

PROPERTY OF OLDCASTLE PRECAST, NOT TO BE REPRODUCED WITHOUT WRITTEN CONSENT. 2005 ©