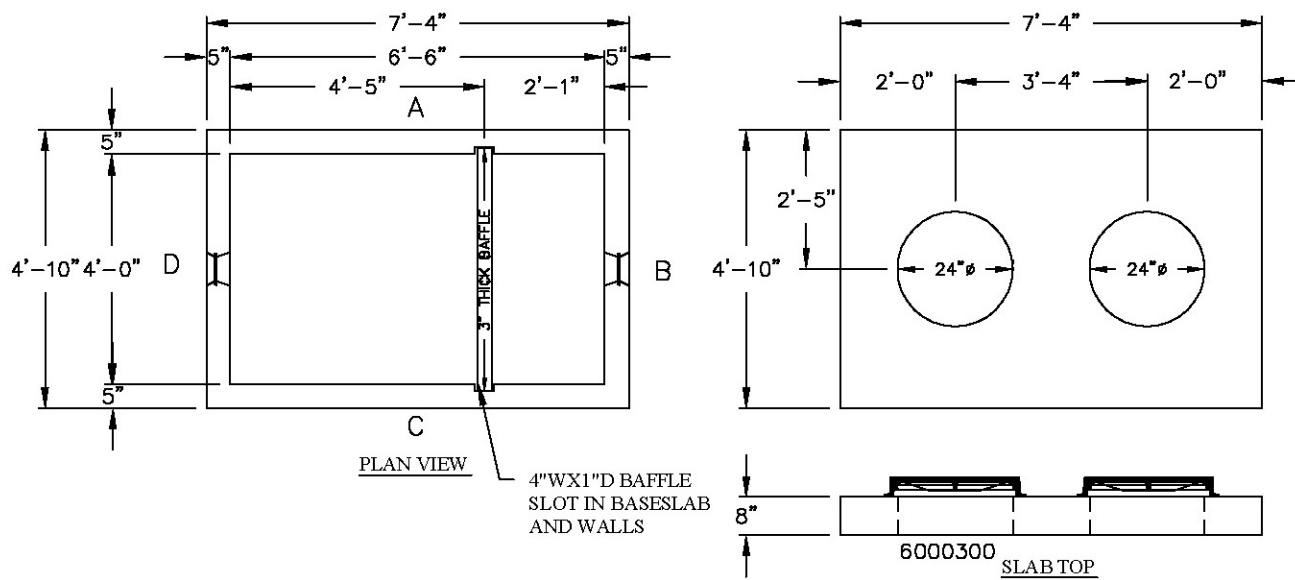
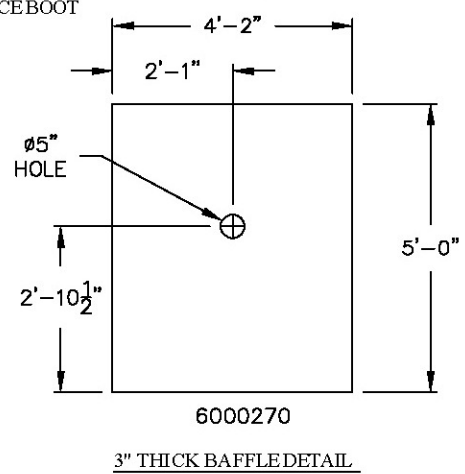
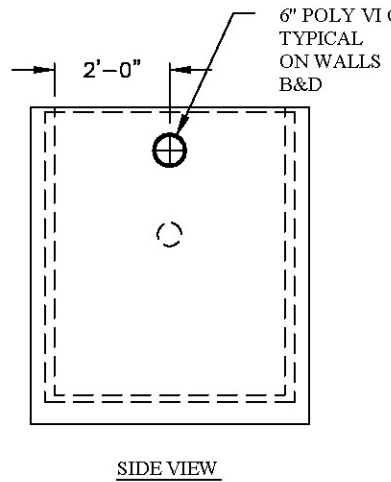
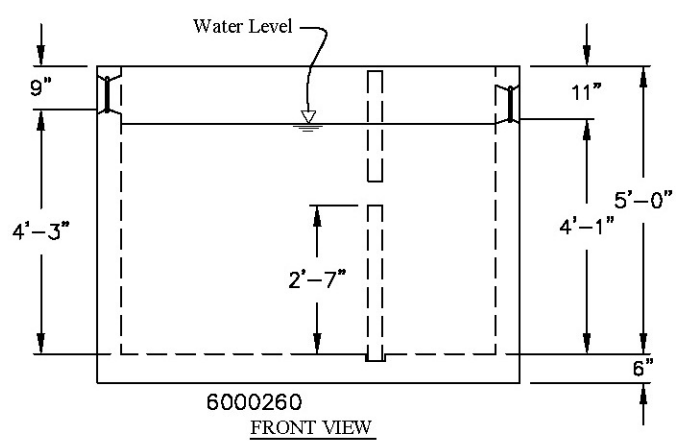


H2O- 750 gal.



- NOTES:**
1. CONCRETE: 28 DAY COMP. STRENGTH F'C = 4,000 PSI.
  2. PRECAST STRUCTURES ARE PRODUCED TO MEET OR EXCEED ASTM SPECIFICATIONS.
  3. SUPPORTS AN H2O LOADING AS INDICATED BY AASHTO DESIGNED FOR 0'-5' OF EARTH COVER
  4. CONTRACTOR TO VERIFY SIZE AND LOCATION OF ALL OPENINGS.
  5. ALL INTERNAL PIPING DONE BY OTHERS - NOT OLD CASTLE
  6. STATE APPROVAL  
#48-106-08D-C4  
(F.A.C.) 84C-8.013  
FLORIDA ADMINISTRATION CODE  
(F-BC) SECTION 1003.4 THRU  
SECTION 1003.4.2.2 AND  
FLORIDA ADMINISTRATION CODE

STAMP MUST APPEAR IN UPPER  
RIGHT HAND CORNER ON WALL D  
6" DOWN FROM TOP OF TOP  
SLAB  
OLDCASTLE PRECAST  
#48-106-08D-C4  
(DATE)  
750 GAL



STRUCTURE TYPE - 750 GALLON GREASE TRAP - 48"X78"X60" (MONOLITHIC) H-20 RATED

**Oldcastle™ Precast Inc.**  
690 WEST TAFT-VINELAND RD. ORLANDO FL 32824  
(407) 855-7580 • FAX: (407) 855-2424

DRAWN: SJW	DATE: 6/19/07
CHECKED:	DATE:
PRODUCED:	SHIPPED:
STR. NO.: 750gal	S.D. NO.: 00000
DRAWING NO.:	LN. NO.:
SCALE: 1"=40"	SHEET: 1 OF 1

WALLS	PIPE SIZE	PIPE INVERT	HOLE SIZE	HOLE UP	PRODUCTION YARDAGE	WEIGHTS	REINFORCEMENT
B	---	+4.08	6" RUBBER BOOT	4'-1"	BASE:		
D	---	+4.25	6" RUBBER BOOT	4'-3"	WALL:		
					TOP:		
BAFFLE	---	+2.58	5"ø	2'-7"	BAFFLE:		
REMARKS:					CASTING:		
					STEEL WT.:		CONC. WT.:

PROPERTY OF OLDCASTLE PRECAST, NOT TO BE REPRODUCED WITHOUT WRITTEN CONSENT. 2005 ©