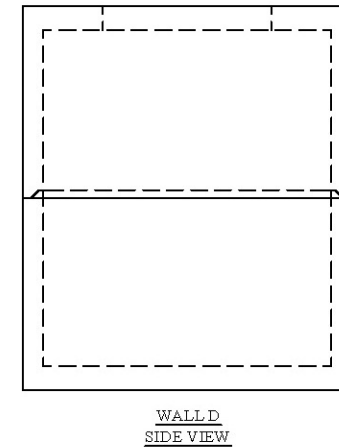
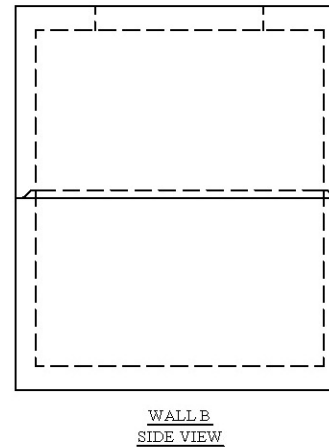
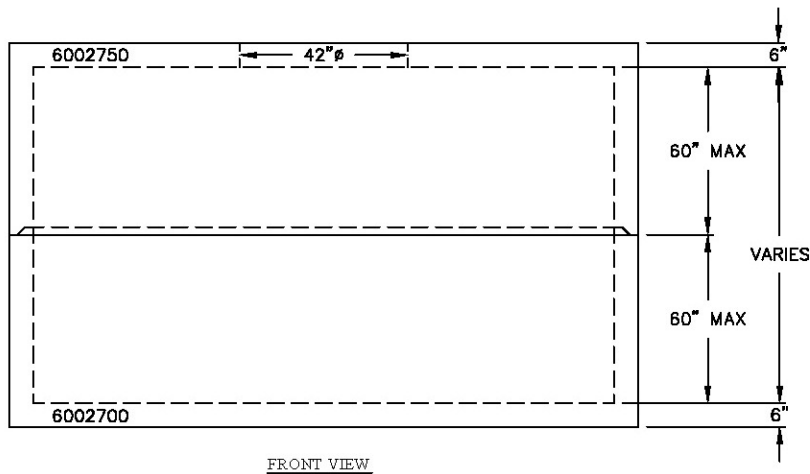


- NOTES:**
1. CONCRETE: 28 DAY COMP. STRENGTH F'C = 4,500 PSI.
  2. REINFORCING: ASTM A-615, GRADE 60.
  3. SUPPORTS AN H20 LOADING AS INDICATED BY AASHTO.
  4. CONTRACTOR TO VERIFY SIZE AND LOCATION OF ALL OPENINGS.

KNOCK-OUTS, BLOCK-OUTS, TERMINATORS, AND CUSTOM LETTERING ON COVERS ARE AVAILABLE UPON REQUEST. CONTRACTOR MUST SPECIFY



STRUCTURE TYPE - 72"x144"xVARIES" MANHOLE

 **Oldcastle™** Precast Inc.  
690 WEST TAFT-VINELAND RD. ORLANDO FL 32824  
(407) 855-7580 • FAX: (407) 855-2424

DRAWN: SJW		DATE: 2/23/07	
CHECKED:		DATE:	
PRODUCED:		SHIPPED:	
STR. NO.: XX	S.O. NO.: 00000	LN. NO.:	
DRAWING NO.:		LOC.:	
SCALE: 1"=4'	SHEET: 1 OF 1		

WALLS	PIPE SIZE	PIPE INVERT	HOLE SIZE	HOLE UP	PRODUCTION YARDAGE	WEIGHTS	REINFORCEMENT
					BASE:		
					WALL:		
					TOP:		
					WALL:		
					BAFFLE:		
REMARKS:					CASTING:		
					STEEL WT.:		CONC WT.: