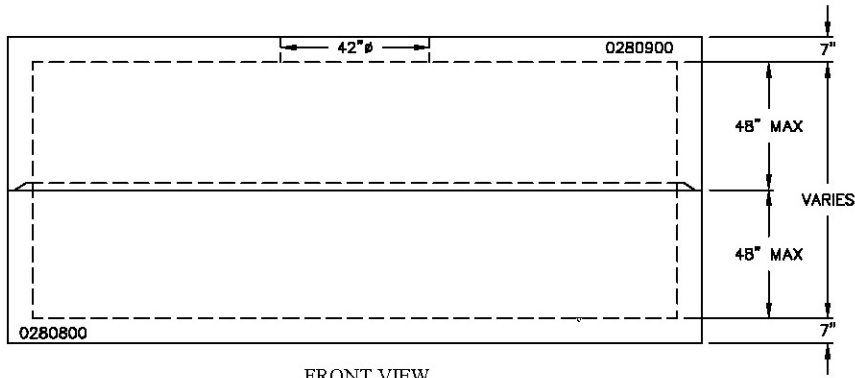


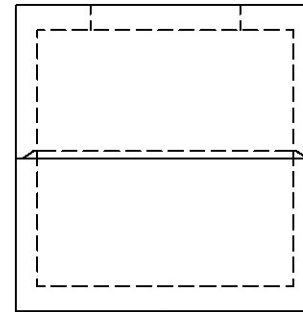
- NOTES:**
1. CONCRETE: 28 DAY COMP. STRENGTH F'C = 4,500 PSI.
 2. REINFORCING: ASTM A-615, GRADE 60.
 3. SUPPORTS AN H2O LOADING AS INDICATED BY AASHTO.
 4. CONTRACTOR TO VERIFY SIZE AND LOCATION OF ALL OPENINGS.

MONO-TOP DETAILS

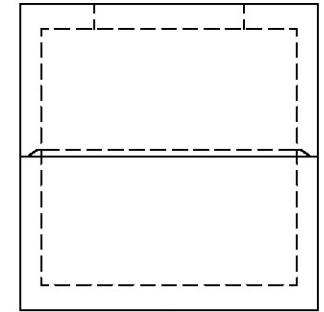
KNOCK-OUTS, BLOCK-OUTS, TERMINATORS, AND CUSTOM LETTERING ON COVERS ARE AVAILABLE UPON REQUEST. CONTRACTOR MUST SPECIFY



FRONT VIEW

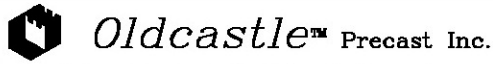


SIDE VIEW



SIDE VIEW

STRUCTURE TYPE - 72"x180"xVARIES" MANHOLE



690 WEST TAFT-VINELAND RD. ORLANDO FL 32824
(407) 855-7580 • FAX: (407) 855-2424

DRAWN: SJW	DATE: 5/25/07
CHECKED:	DATE:
PRODUCED:	SHIPPED:
STR. NO.: 0280800	S.O. NO.: 00000
LN. NO.:	
DRAWING NO.:	LOC.:
SCALE: 1"=4'	SHEET: 1 OF 1

WALLS	PIPE SIZE	PIPE INVERT	HOLE SIZE	HOLE UP	PRODUCTION YARDAGE	WEIGHTS	REINFORCEMENT
					BASE:		
					WALL:		
					TOP:		
					WALL:		
					BAFFLE:		
					CASTING:		
					STEEL WT.:		CONC. WT.: