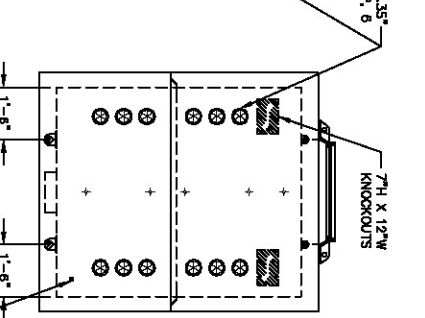
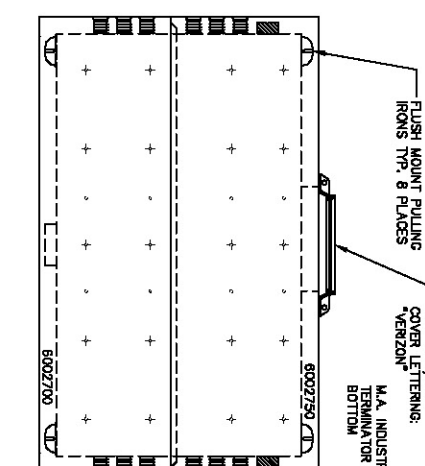
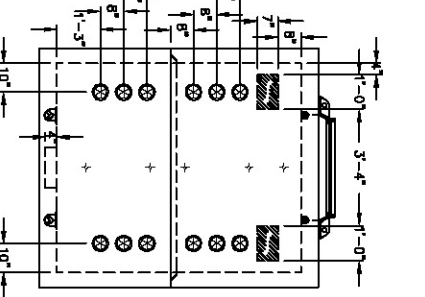
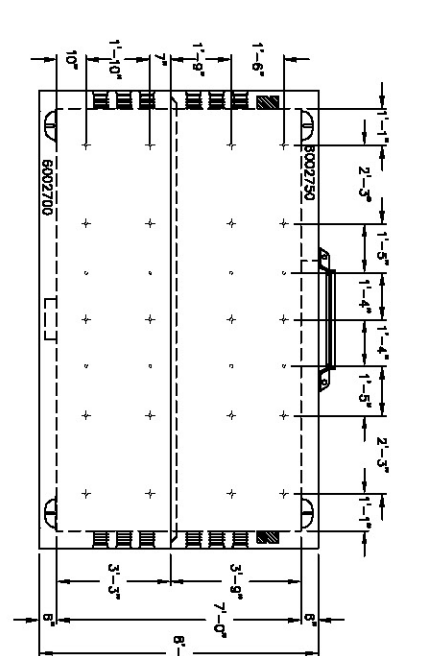


- NOTES:
1. CONCRETE: 28 DAY COMP. STRENGTH F'C = 4,500 PSI.
 2. REINFORCING: ASTM A-615, GRADE 60.
 3. SUPPORTS AN H2O LOADING AS INDICATED BY AASHTO.
 4. CONTRACTOR TO VERIFY SIZE AND LOCATION OF ALL OPENINGS.
 5. STATE APPROVAL #48-106-08D-C4
- LEGEND
- 1/4" THREADED BRONZE INSERT W/ TAIL
 - ⊕ 1/2" PLASTIC RACKING INSERTS



FRONT VIEW C

SIDE VIEW B

FRONT VIEW A

SIDE VIEW D

PROPERTY OF OLDCASTLE PRECAST, NOT TO BE REPRODUCED WITHOUT WRITTEN CONSENT. 2005 ©

STRUCTURE TYPE - 72"x144"x84" VERIZON MANHOLE



Oldcastle™ Precast Inc.

680 WEST TAFT-VINELAND RD. ORLANDO FL 32824
 (407) 865-7580 • FAX: (407) 866-2424

VERIZON FLORIDA INC.
 KENNEDY BLVD

DRAWN: BENE	DATE: 5/10/07
CHECKED:	DATE:
PRODUCED:	SHIPPED:
STR. NO.: XX	S.O. NO.: 52190
DRAWING NO.:	LN. NO.:
SCALE: 1:66	SHEET: 1 OF 1
LOC.:	

WALLS	PIPE SIZE	PIPE INVERT	HOLE SIZE	HOLE UP	PRODUCTION YARDAGE	WEIGHTS	REINFORCEMENT
					BASE:		
					WALL:		
					RISER:		
					WALL:		
					BAFFLE:		
REMARKS:					CASTING:	4064001	
					STEEL WT.:		
					CONC. WT.:	205	E.W. 1820 W/ 1810 COVER