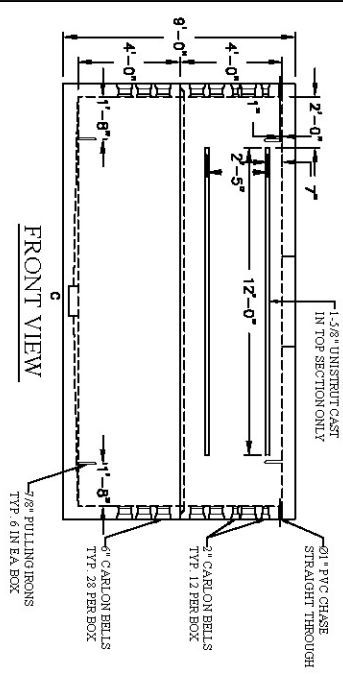


PLAN VIEW

TOP VIEW

- NOTES:
1. CONCRETE: 28 DAY COMP. STRENGTH F'C = 4,500 PSI.
  2. REINFORCING: ASTM A-615, GRADE 60.
  3. SUPPORTS AN H20 LOADING AS INDICATED BY AASHTO.
  4. CONTRACTOR TO VERIFY SIZE AND LOCATION OF ALL OPENINGS.

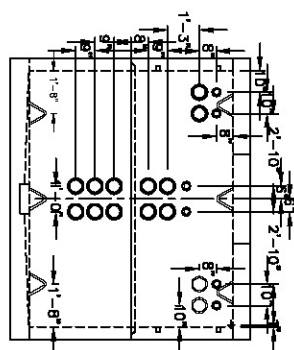
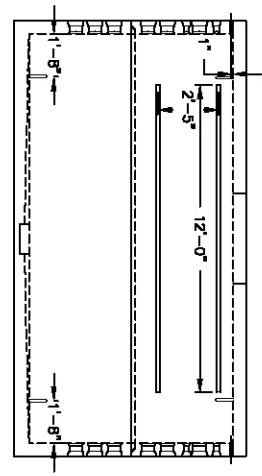
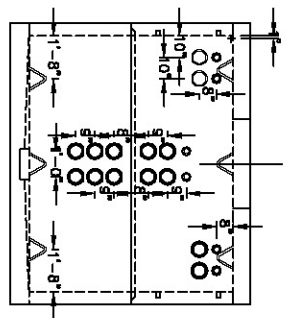


FRONT VIEW

RIGHT VIEW

REAR VIEW

LEFT VIEW



STRUCTURE TYPE - 120"x192"x96" OUC MANHOLE



Oldcastle™ Precast Inc.

690 WEST TAFT-VINELAND RD. ORLANDO FL 32824  
(407) 855-7560 • FAX: (407) 855-2424

PROJECT	OUC	DRAWING NO.:	STR. NO.:	SCALE:	1:90
		SHEET:	1 OF 1		
		DATE:	5/08/07		
		DATE:			
		SHIPPER:			
		LN. NO.:			
		LOC.:			
		REMARKS:			
		CASTINGS:			
		STEEL WGT.:			
		CONC WGT.:			

WALLS	PIPE SIZE	PIPE INVERT	HOLE SIZE	HOLE UP	PRODUCTION YARDAGE	WEIGHTS	REINFORCEMENT