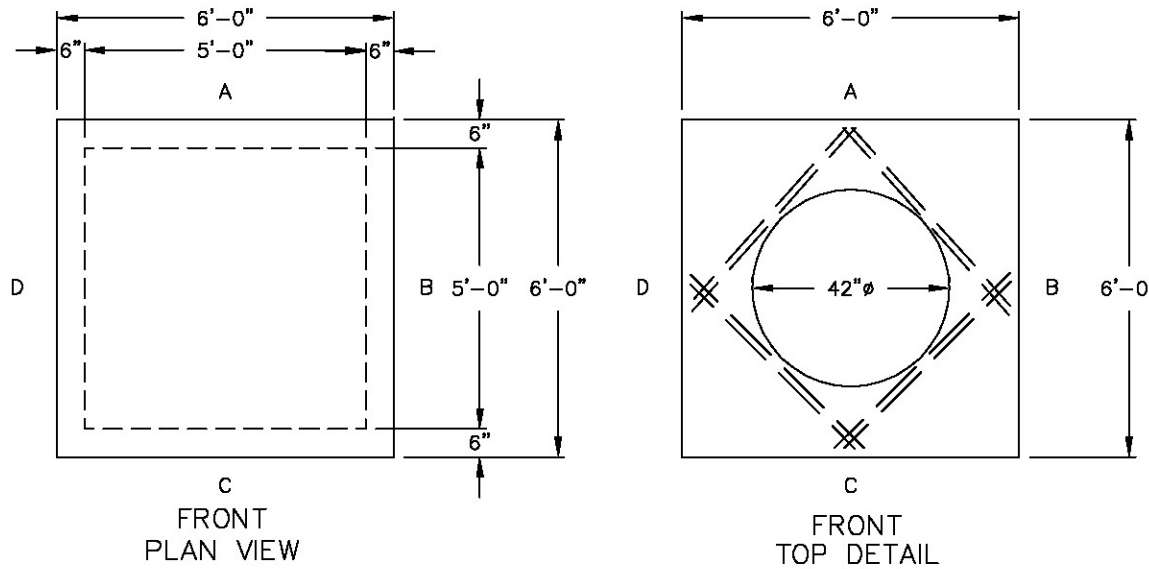
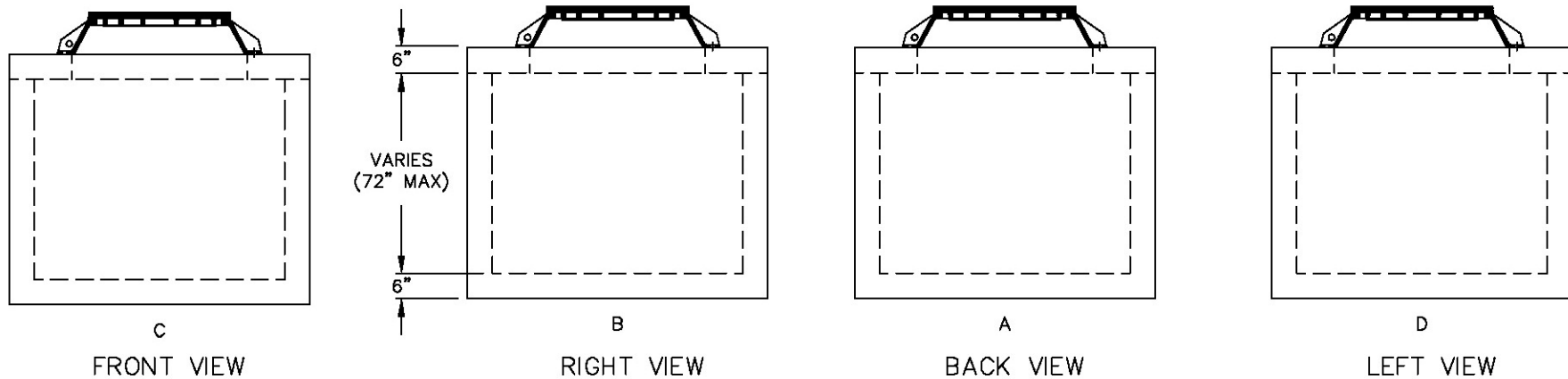


60x60xVARIES  
MANHOLE



- NOTES:**
1. CONCRETE: 28 DAY COMPRESSIVE STRENGTH F'C = 5,500 PSI.
  2. REINFORCING: ASTM A-615, GRADE 60.
  3. SUPPORTS AN H20 LOADING AS INDICATED BY AASHTO.
  4. CONTRACTOR TO VERIFY SIZE AND LOCATION OF ALL OPENINGS AND KNOCK-OUTS

KNOCK-OUTS, BLOCK-OUTS, TERMINATORS, AND CUSTOM LETTERING ON COVERS ARE AVAILABLE UPON REQUEST. CONTRACTOR MUST SPECIFY



PROPERTY OF OLDCASTLE PRECAST, NOT TO BE REPRODUCED WITHOUT WRITTEN CONSENT. 2005 ©

STRUCTURE TYPE "60x60xVARIES MANHOLE"

**Oldcastle™** Precast Inc.  
690 WEST TAFT-VINELAND RD. ORLANDO FL 32824  
(407) 866-7680 • FAX: (407) 866-2424

DRAWN: RENE		DATE: 7/13/07	
CHECKED:		DATE:	
PRODUCED:		SHIPPED:	
STR. NO.: BOX #1	S.O. NO.: 00000	LN. NO.:	
DRAWING NO.:		LOC.:	
SCALE: 1"=3'	SHEET: 1 OF 1		

WALLS					PRODUCTION		REINFORCEMENT
					YARDAGE	WEIGHTS	
					BASE:		
					WALL:		
					RISER:		
					RISER:		
					LID:		
					CASTING:		
					HATCH:		
					STEEL WT.:		CONC WT.:

CONTRACTOR	
PROJECT	