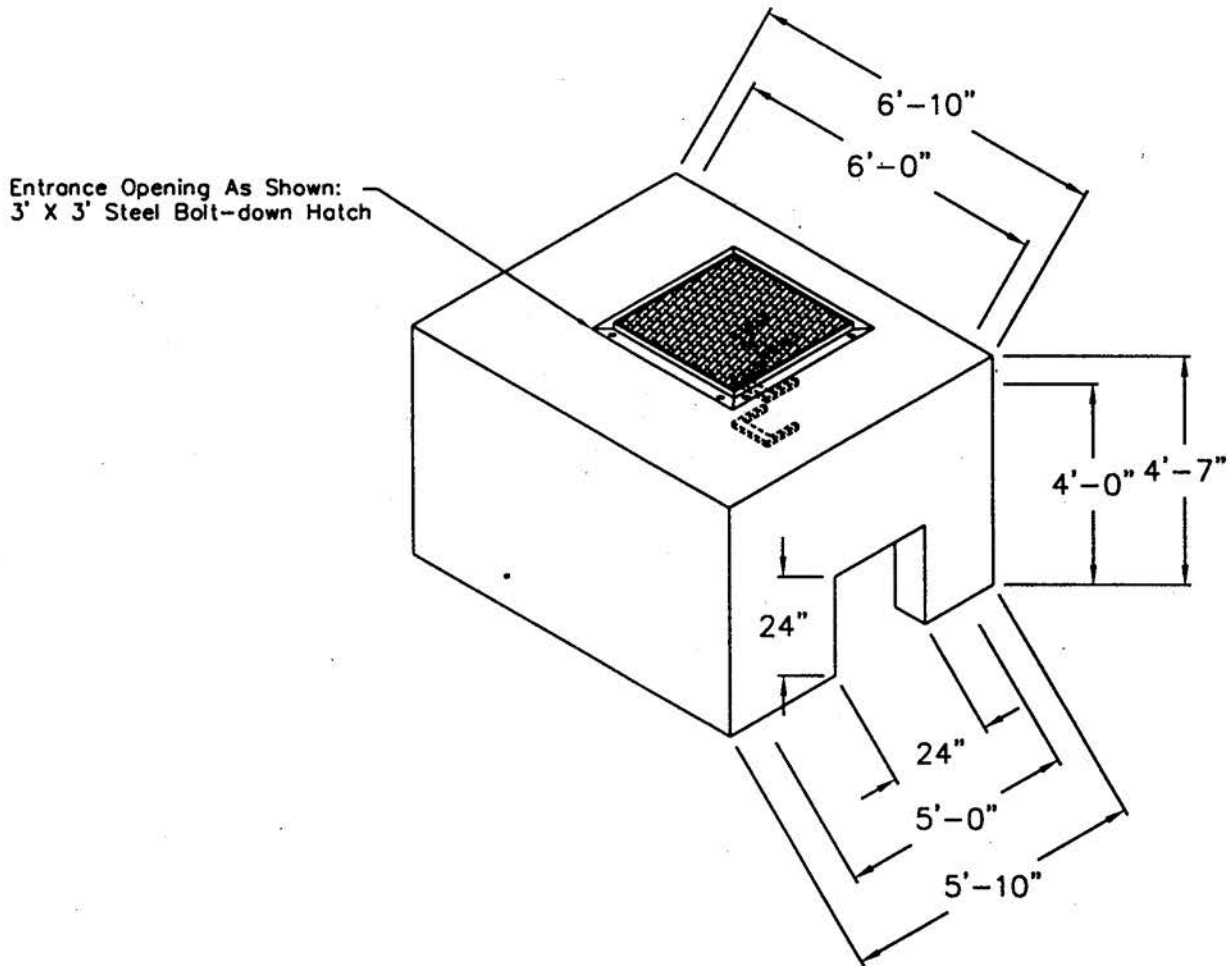


Standard Dog House Meter Vault

5'-0" x 6'-0" x 4'-0" I.D.



CONCRETE WEIGHT: 9,655 lbs.

SPECIFICATIONS

- Concrete: 5000 p.s.i. ● 28 days
- Steel Reinforcing: ASTM A-615-75, Grade 60
- Design Loading of Concrete: AASHTO H-20
- Design Loading for Hatch: Pedestrian Duty