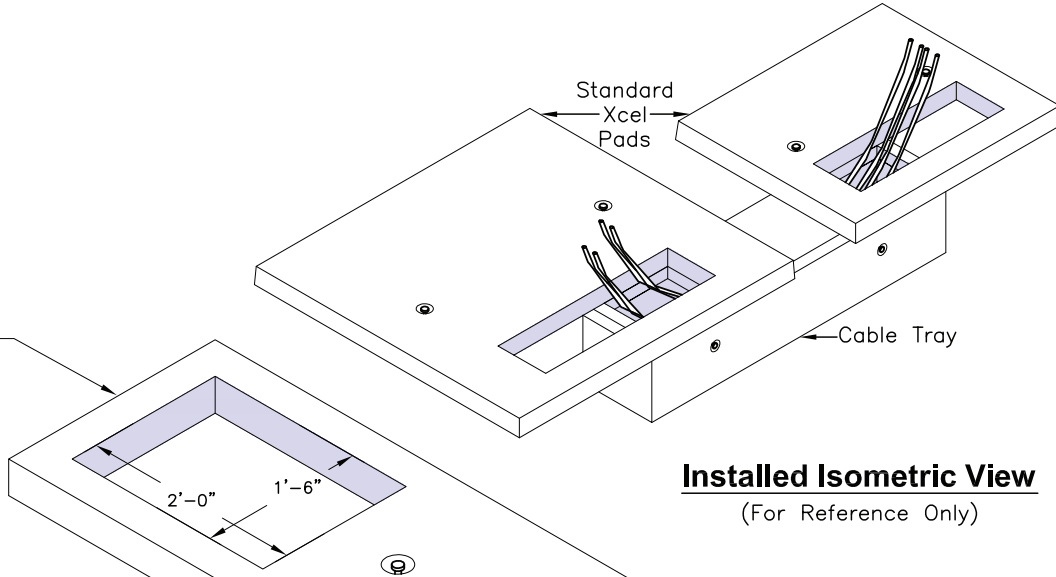
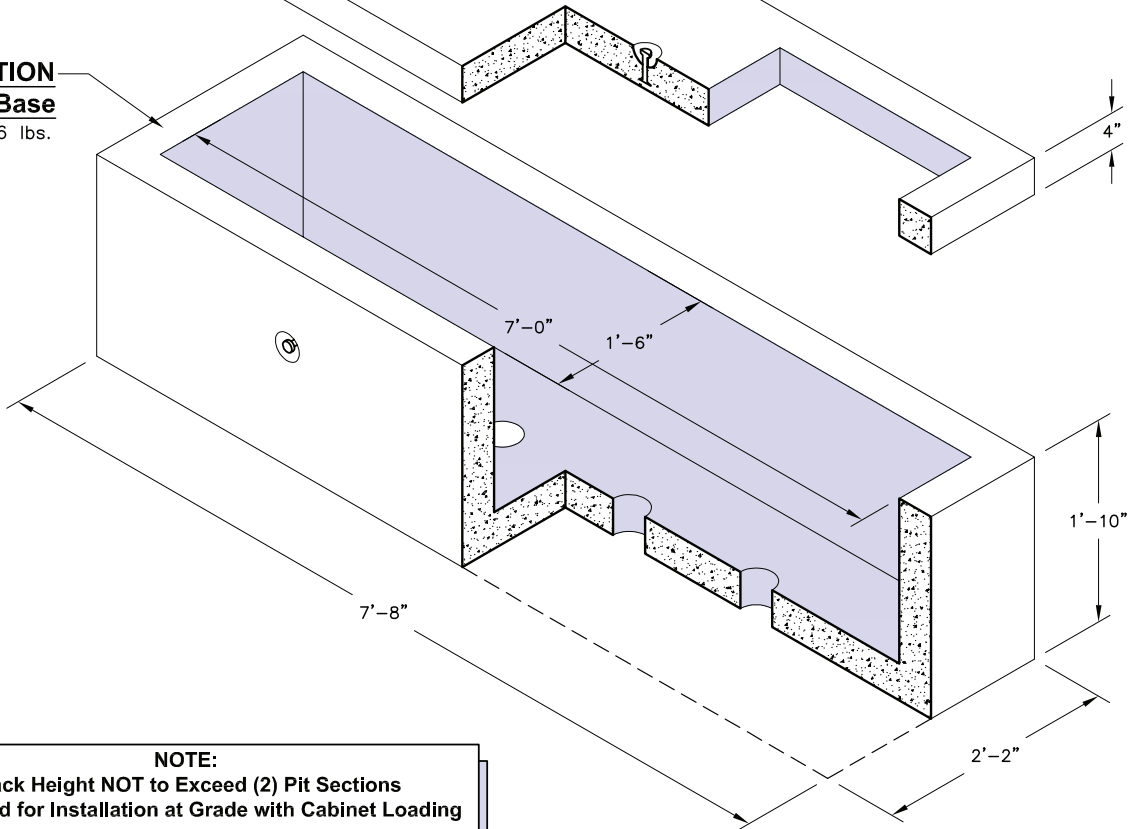


LID SECTION
Cable Tray
 Weight = 530 lbs.



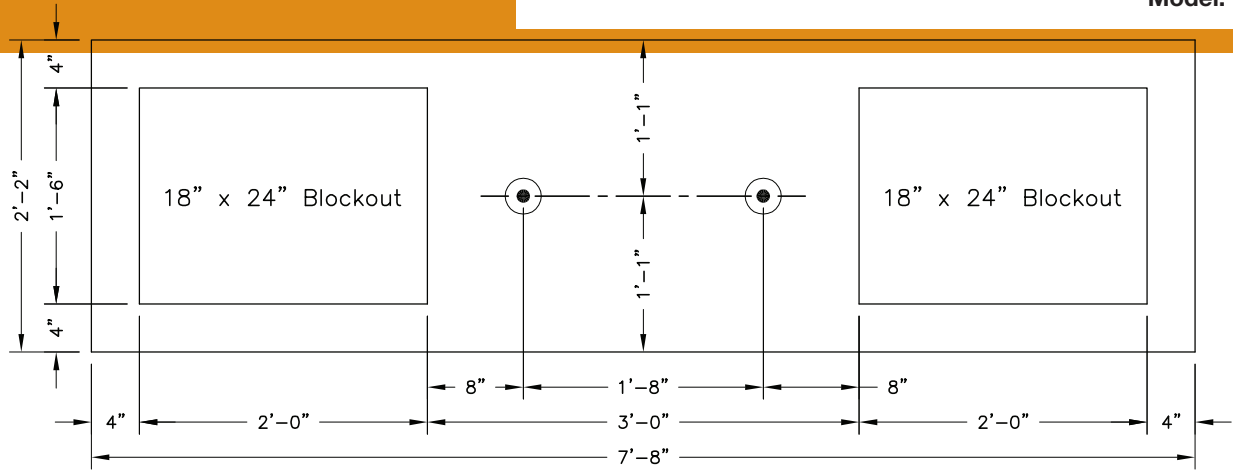
Installed Isometric View
 (For Reference Only)

RISER SECTION
Cable Tray Base
 Weight = 2,186 lbs.

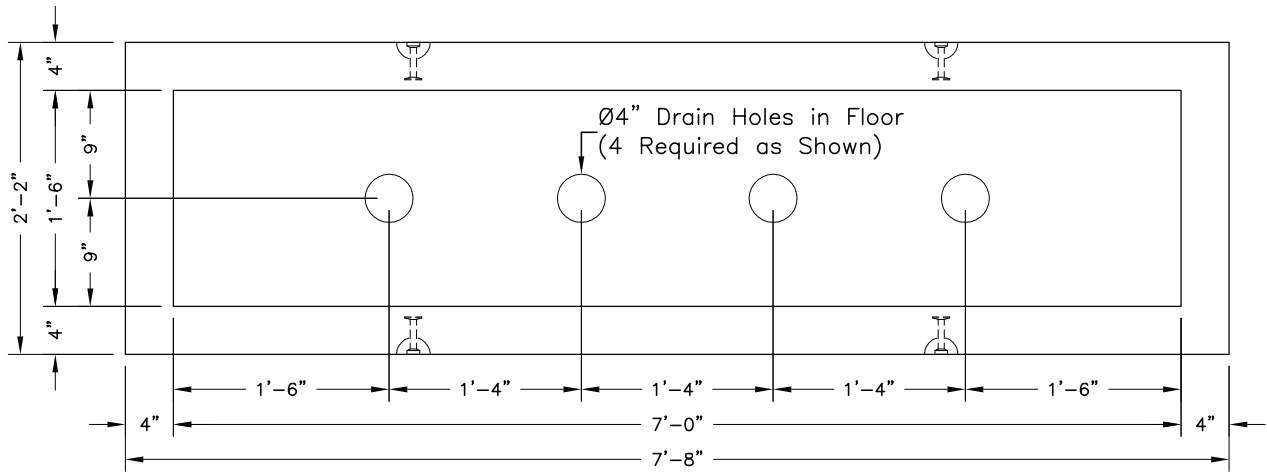


NOTE:
 Stack Height NOT to Exceed (2) Pit Sections
 *Designed for Installation at Grade with Cabinet Loading

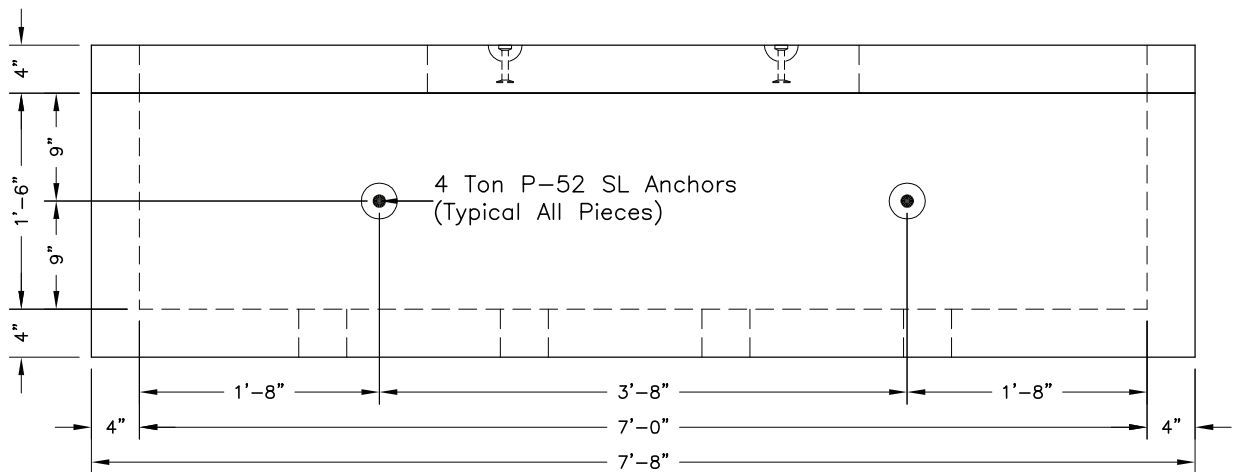
Electrical Cable Tray		
Description	Item Code	Weight
Lid	1801455	530 lbs.
Base	1801450	2,186 lbs.



Lid Plan View



Base Plan View



Cable Tray Elevation View