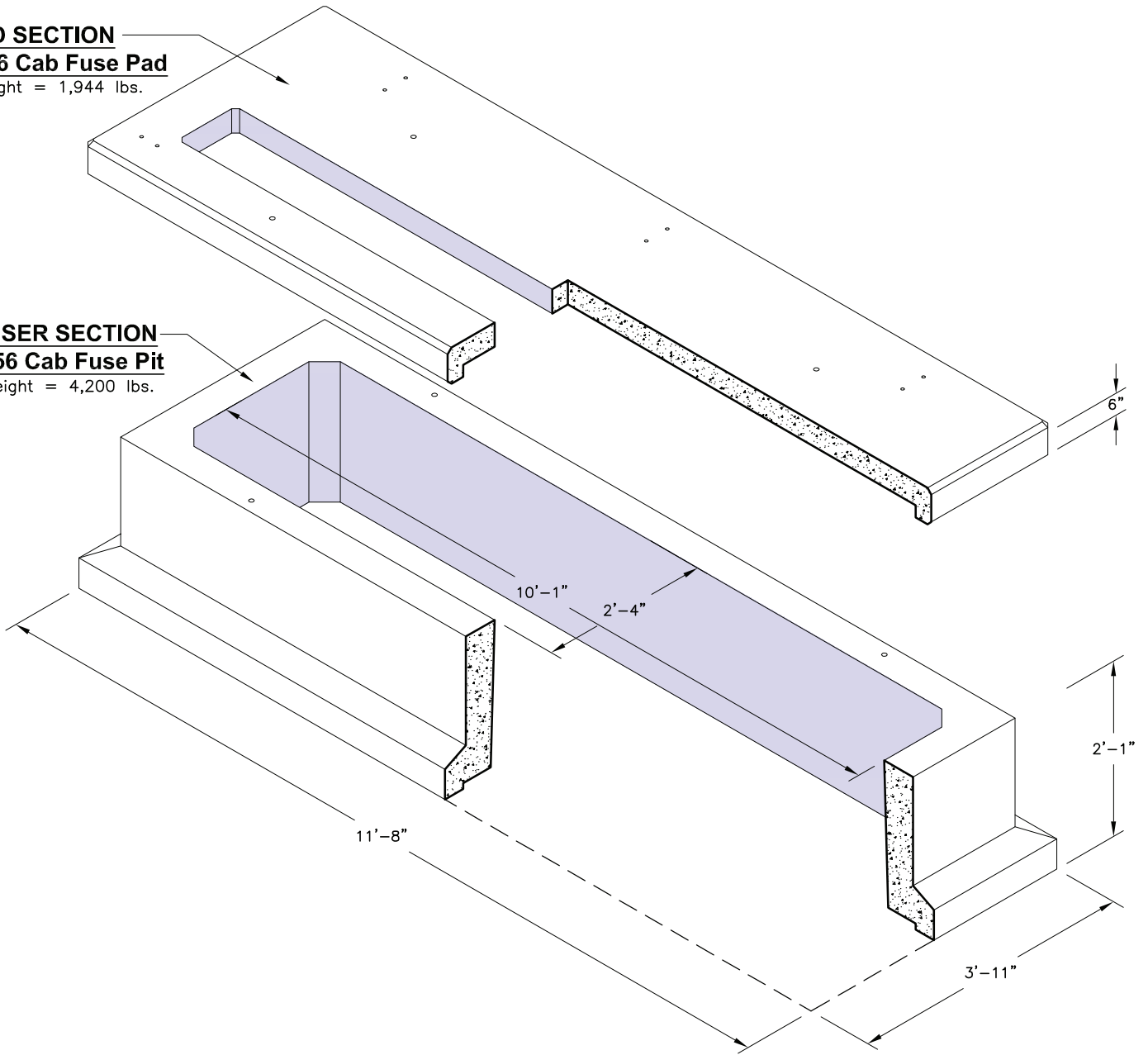


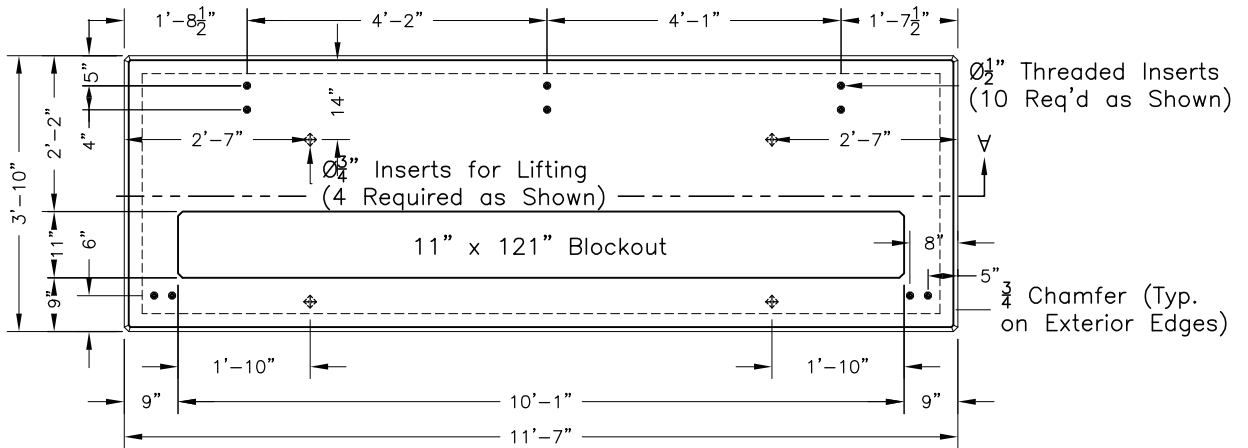
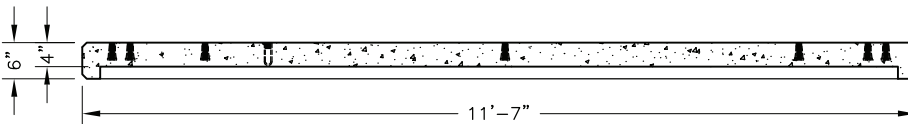
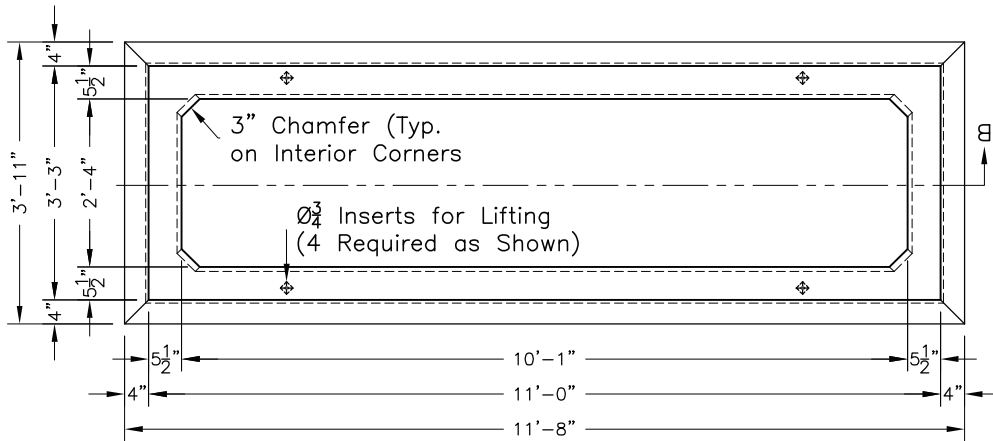
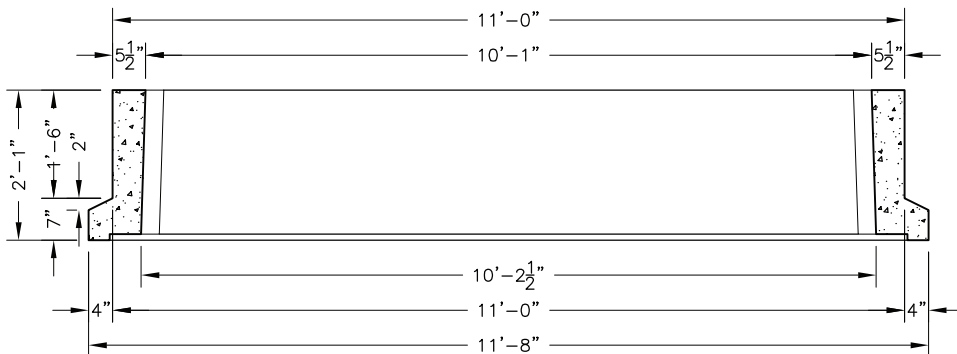
**LID SECTION**  
**456 Cab Fuse Pad**  
 Weight = 1,944 lbs.

**RISER SECTION**  
**456 Cab Fuse Pit**  
 Weight = 4,200 lbs.



**NOTE:**  
 Stack Height NOT to Exceed (2) Pit Sections  
 \*Designed for Installation at Grade with Cabinet Loading

Electrical Pit & Pad Components			
Item Code	Quantity	Description	Weight
1824300	1	456 Pad	1,944 lbs.
1801200	1	456 Pit	4,200 lbs.


**Pad Plan View**

**Pad Section A**

**Pit Plan View**

**Pit Section B**