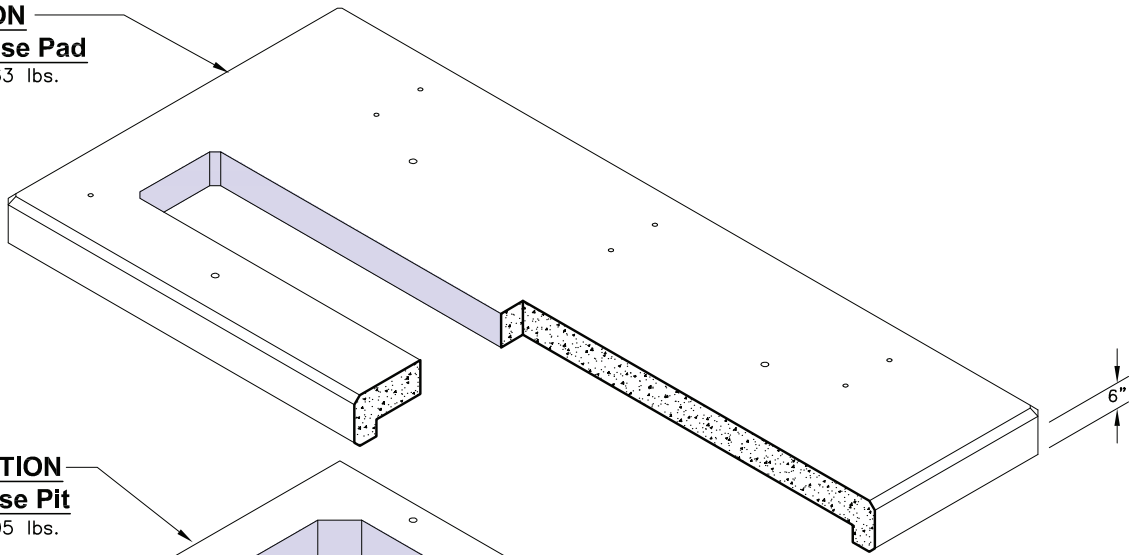
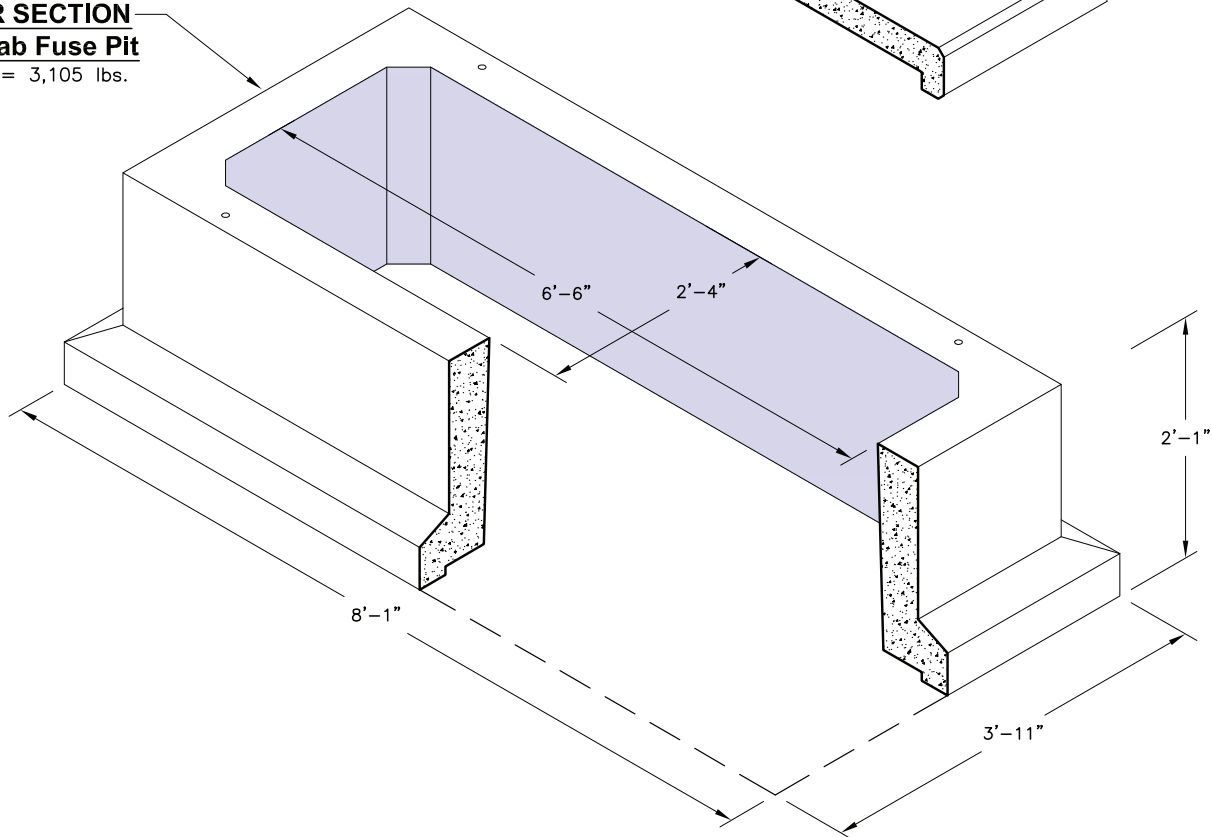


LID SECTION
464 Cab Fuse Pad
 Weight = 1,363 lbs.



RISER SECTION
464 Cab Fuse Pit
 Weight = 3,105 lbs.



NOTE:
 Stack Height NOT to Exceed (2) Pit Sections
 *Designed for Installation at Grade with Cabinet Loading

Electrical Pit & Pad Components			
Item Code	Quantity	Description	Weight
1824400	1	464 Pad	1,363 lbs.
1801300	1	464 Pit	3,105 lbs.

