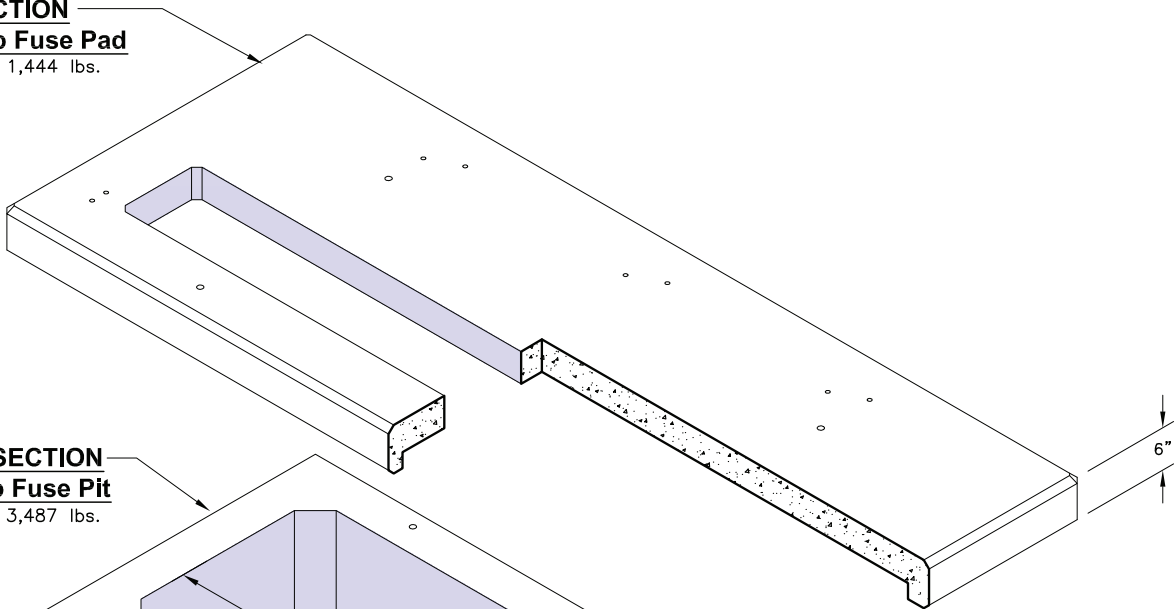
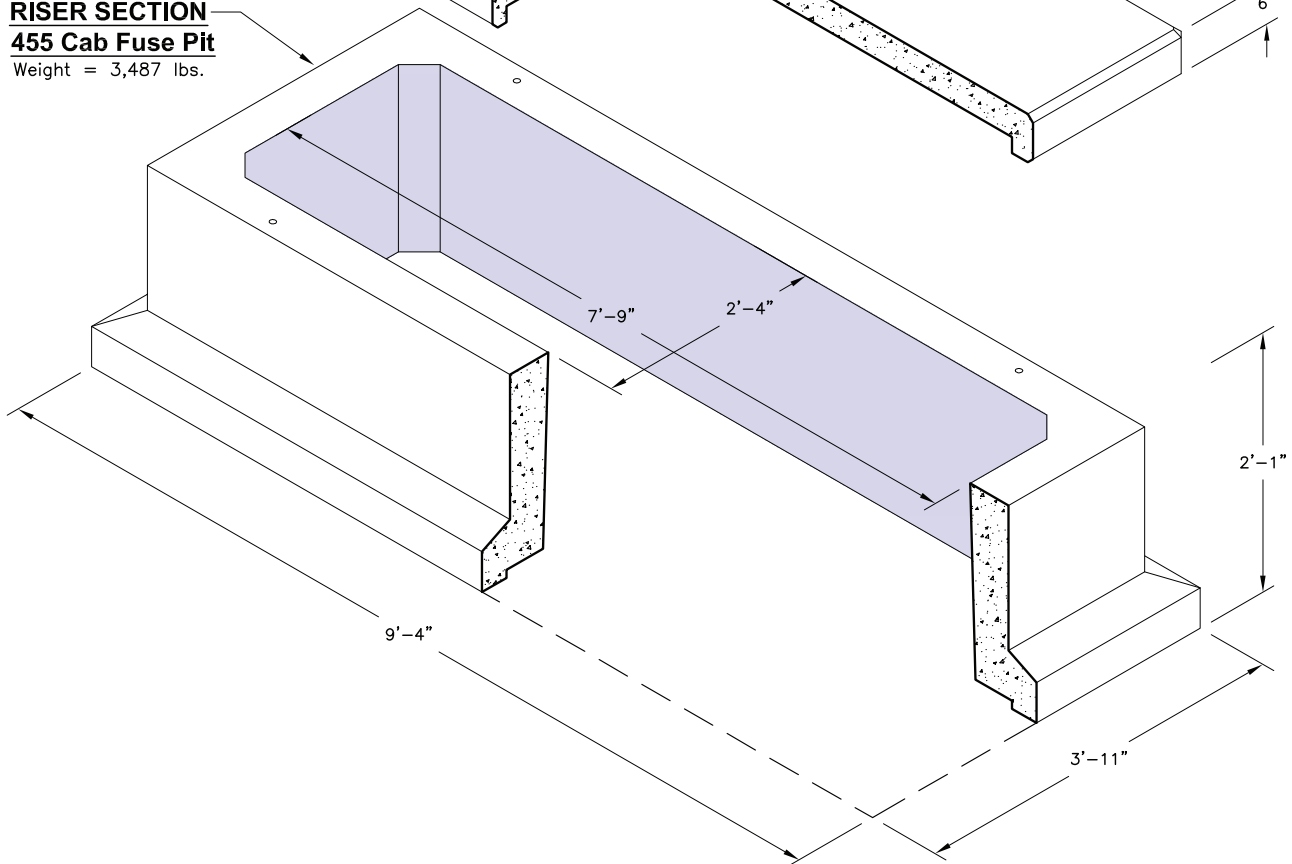


LID SECTION
455 Cab Fuse Pad
 Weight = 1,444 lbs.



RISER SECTION
455 Cab Fuse Pit
 Weight = 3,487 lbs.



NOTE:
 Stack Height NOT to Exceed (2) Pit Sections
 *Designed for Installation at Grade with Cabinet Loading

Electrical Pit & Pad Components			
Item Code	Quantity	Description	Weight
1824200	1	455 Pad	1,444 lbs.
1801100	1	455 Pit	3,487 lbs.

