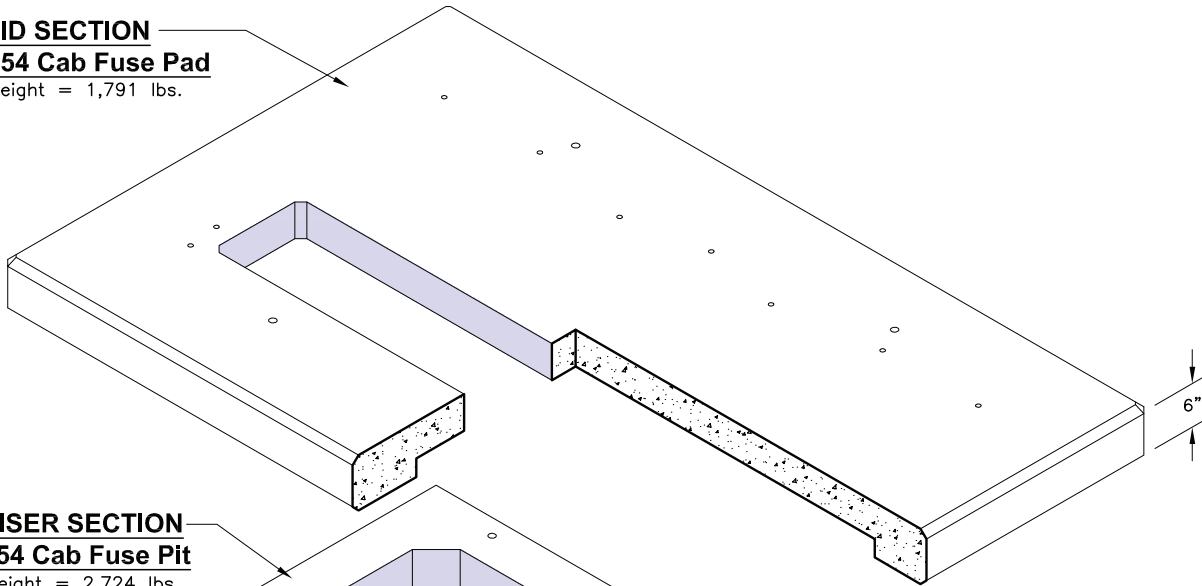
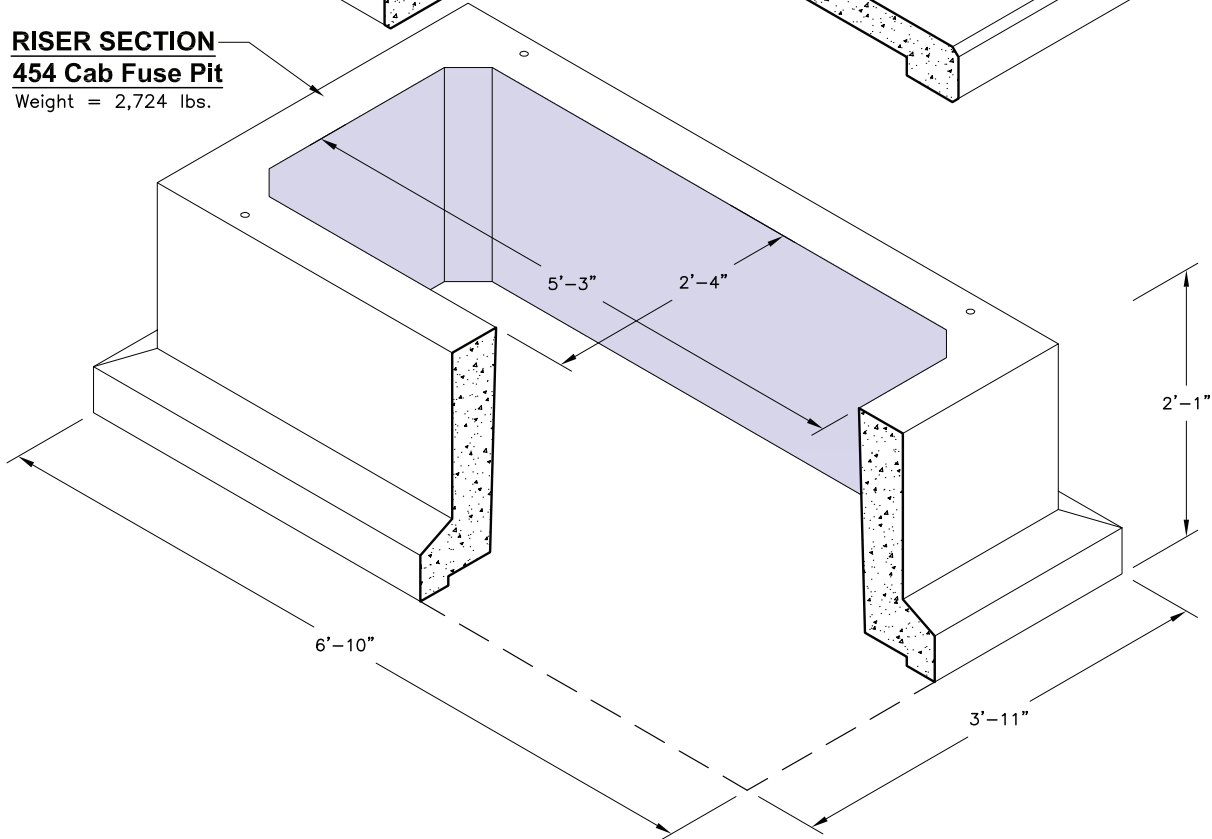


LID SECTION
454 Cab Fuse Pad
 Weight = 1,791 lbs.



RISER SECTION
454 Cab Fuse Pit
 Weight = 2,724 lbs.



NOTE:
 Stack Height NOT to Exceed (2) Pit Sections
 *Designed for Installation at Grade with Cabinet Loading

Electrical Pit & Pad Components			
Item Code	Quantity	Description	Weight
1824100	1	454 Pad	1,791 lbs.
1801000	1	454 Pit	2,724 lbs.

