

2-332-P Galvanized
 Diamond Plated Hatch
 Pack Covers Hinged
 And Lockable

LID SECTION

Weight = 7,049 lbs.

Uv Co 3030P Galvanized Hatch
 Diamond Plated (2 Req'd)

If A Riser Is Req'd
 The Base Is Poured
 With A Shiplap Joint

BASE SECTION

Weight = 27,511 lbs.

12" Dia. Inlet Pipe
 By Others

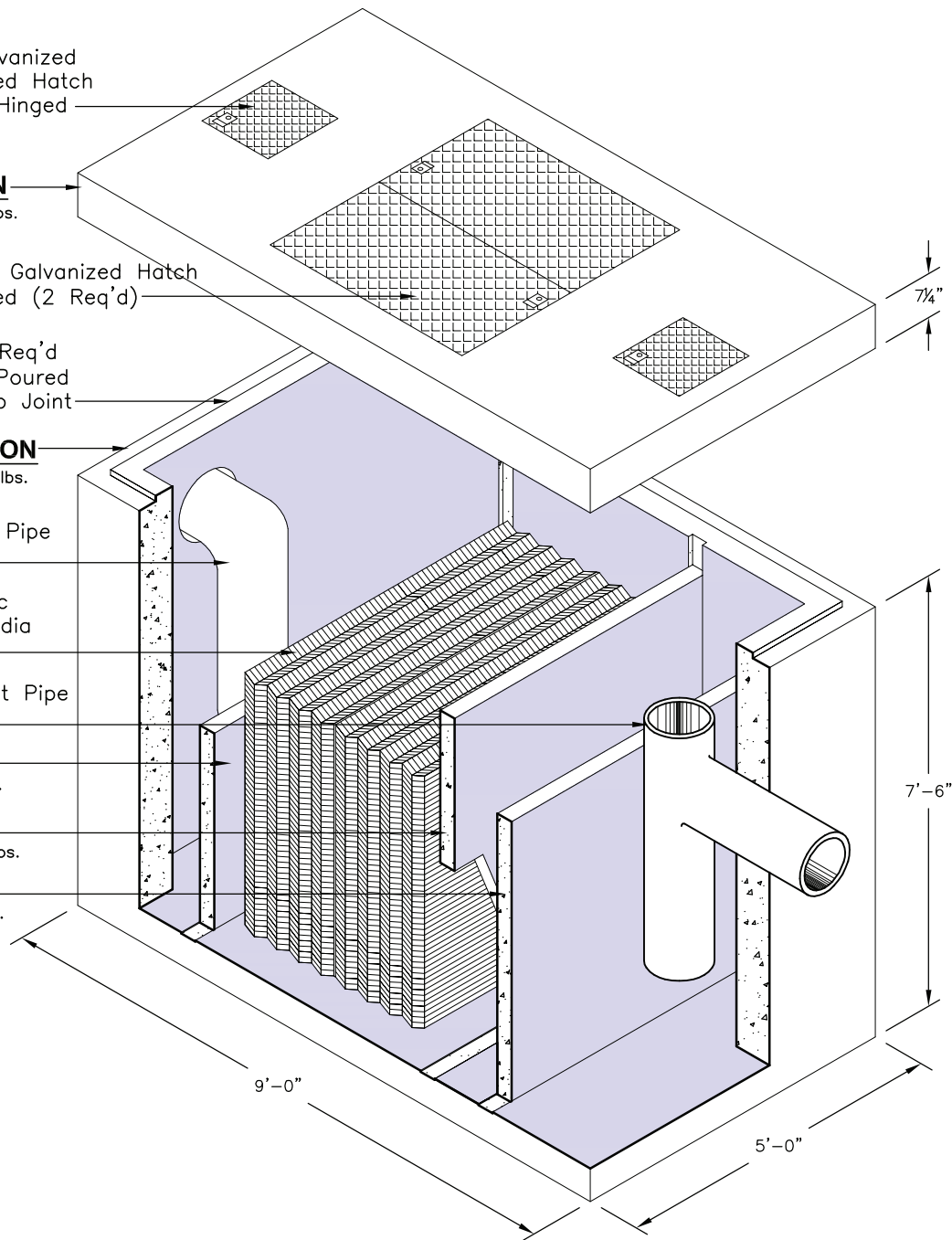
"Facet" M-Pac
 Coalescing Media
 (2 Rows)

12" Dia. Outlet Pipe
 By Others

Sludge Weir
 Weight = 724 lbs.

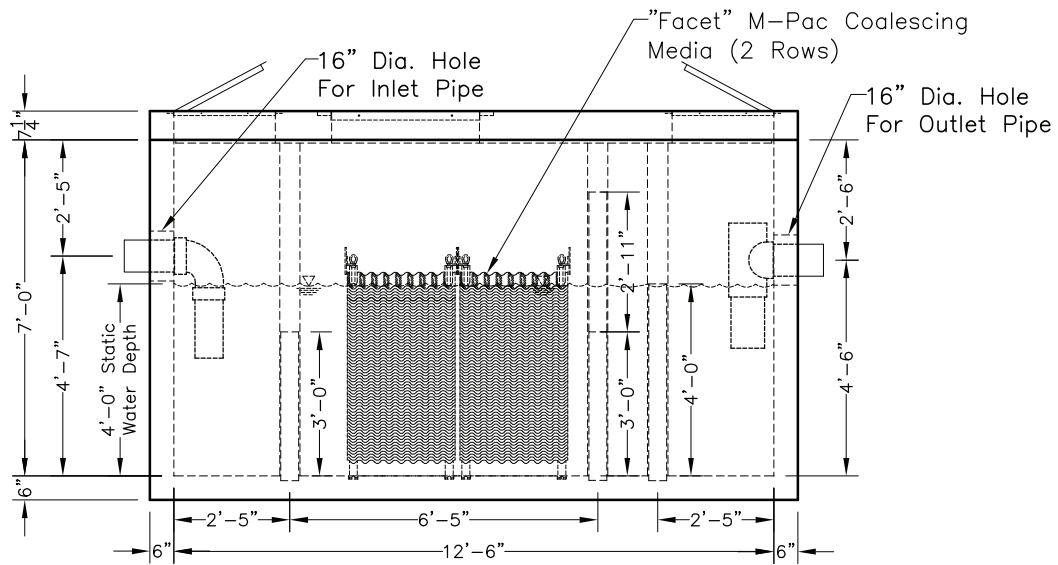
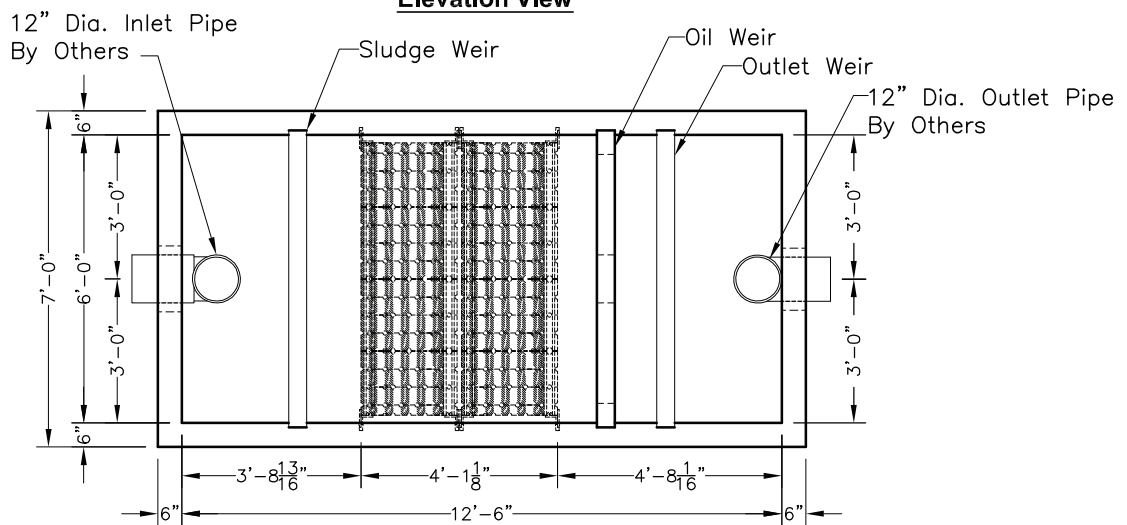
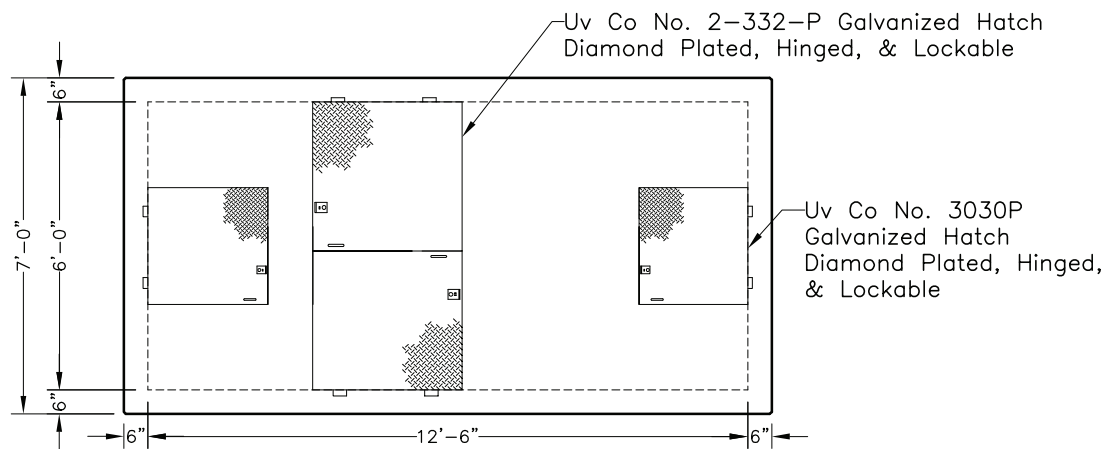
Oil Weir
 Weight = 1,030 lbs.

Outlet Weir
 Weight = 956 lbs.



Design Information

- Influent Conditions
- 45° Water Temperature
 - 0.85 Oil Specific Gravity
 - 100 PPM Influent Concentration


Elevation View

Base Plan View

Lid Plan View