

Uv Co 3030P
 Galvanized Hatch
 Diamond Plated (2 Req'd)

LID SECTION

Weight = 12,929 lbs.

2-332-P Galvanized
 Diamond Plated Hatch
 Pack Covers Hinged
 And Lockable

If A Riser Is Req'd
 The Base Is Poured
 With A Shiplap Joint

BASE SECTION

Weight = 37,517 lbs.

12" Dia. Inlet Pipe
 Supplied By
 Contractor

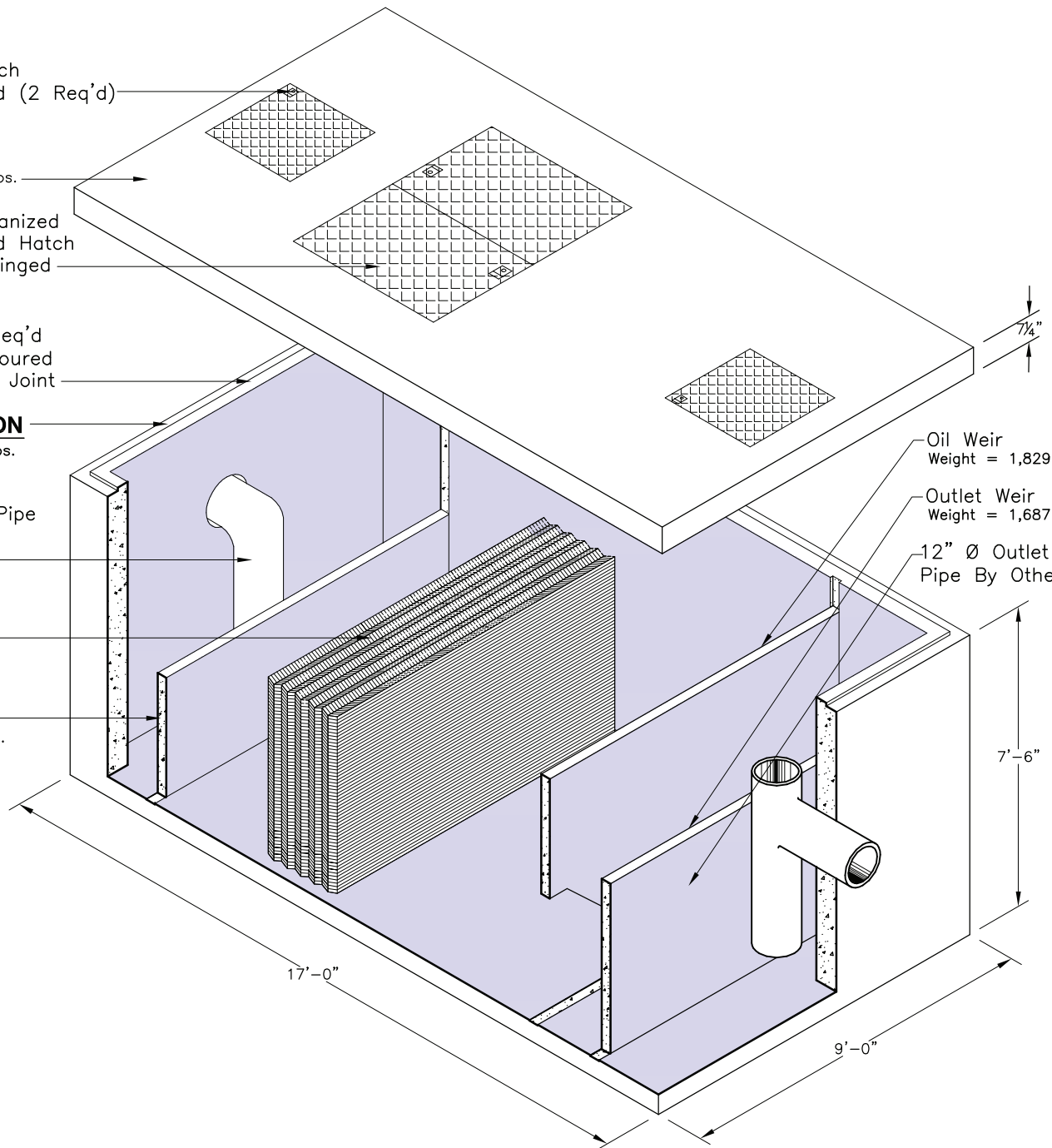
"Facet" M-Pac
 Coalescing
 Media (1 Row)

Sludge Weir
 Weight = 1,277 lbs.

Oil Weir
 Weight = 1,829 lbs.

Outlet Weir
 Weight = 1,687 lbs.

12" Ø Outlet
 Pipe By Others



Design Information

- Influent Conditions
- 45° Water Temperature
 - 0.85 Oil Specific Gravity
 - 100 PPM Influent Concentration

