

Uv Co 3030P
Galvanized Hatch
Diamond Plated (2 Req'd)

LID SECTION

Weight = 12,929 lbs.

2-332-P Galvanized
Diamond Plated Hatch
Pack Covers Hinged
And Lockable

If A Riser Is Req'd
The Base Is Poured
With A Shiplap Joint

BASE SECTION

Weight = 37,517 lbs.

12" Dia. Inlet Pipe
By Others

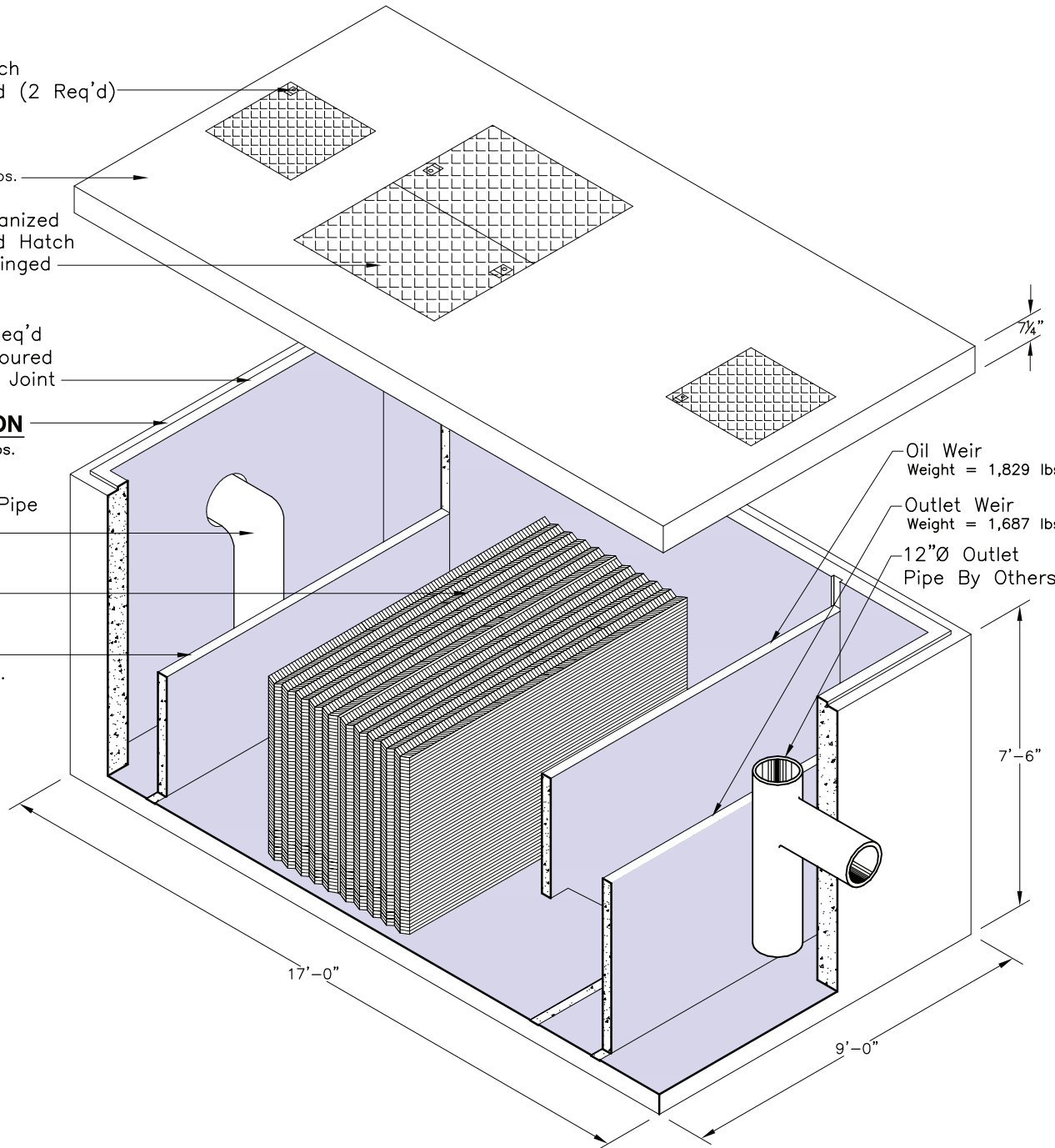
"Facet" M-Pac
Coalescing
Media (1 Row)

Sludge Weir
Weight = 1,277 lbs.

Oil Weir
Weight = 1,829 lbs.

Outlet Weir
Weight = 1,687 lbs.

12"Ø Outlet
Pipe By Others



Design Information

- Influent Conditions
- 45° Water Temperature
 - 0.85 Oil Specific Gravity
 - 100 PPM Influent Concentration

