

Uv Co 3030P Galvanized
Hatch Diamond Plated,
Hinged, & Lockable
(Req'd In 2 Places)

LID SECTION

Weight = 12,929 lbs.

2-332-P Galvanized
Hatch Diamond Plated,
Hinged, & Lockable

If A Riser Is Req'd
The Base Is Poured
With A Shiplap Joint

12" Dia. Inlet Pipe
Supplied By
Contractor

BASE SECTION

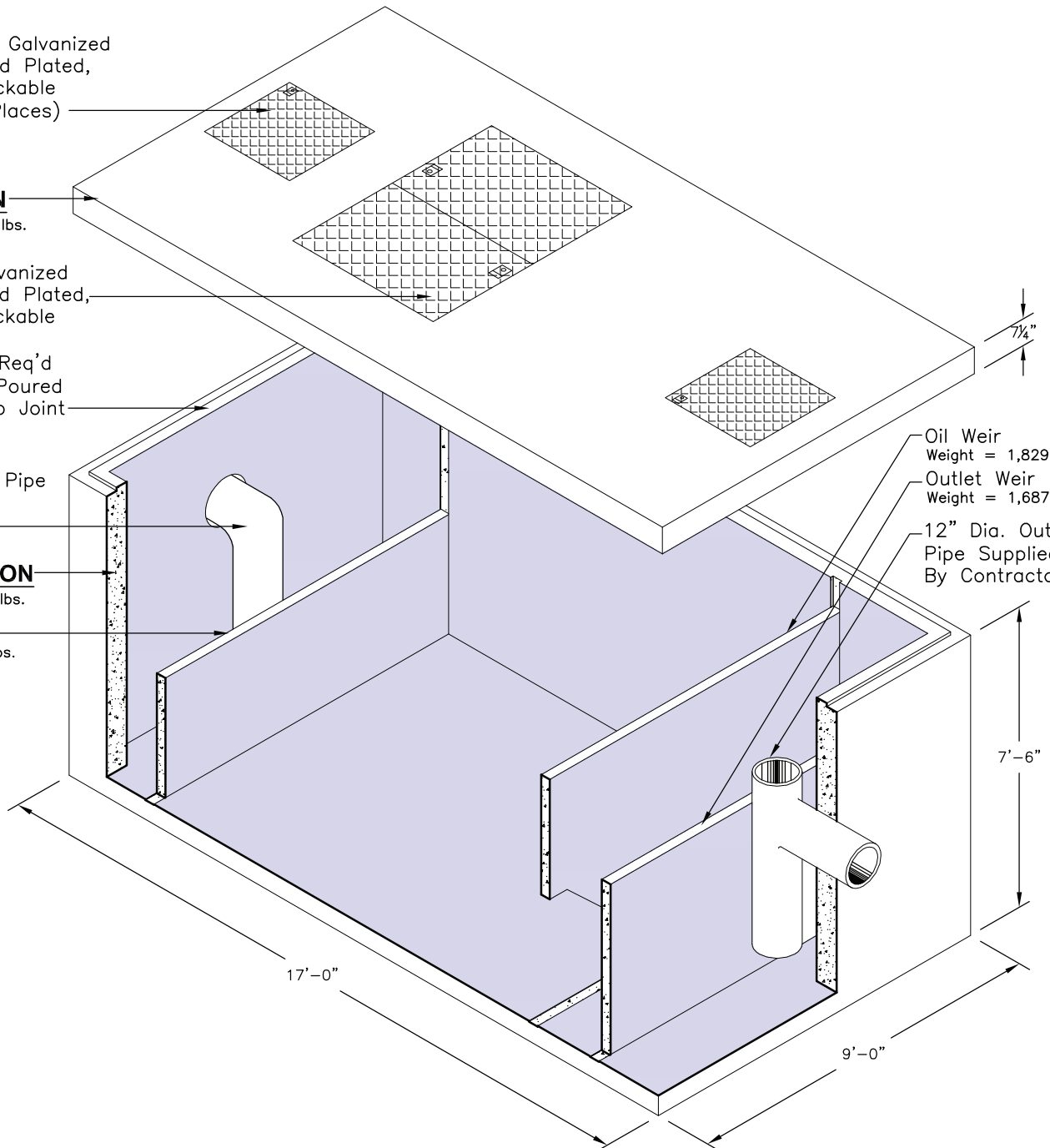
Weight = 37,517 lbs.

Sludge Weir
Weight = 1,277 lbs.

Oil Weir
Weight = 1,829 lbs.

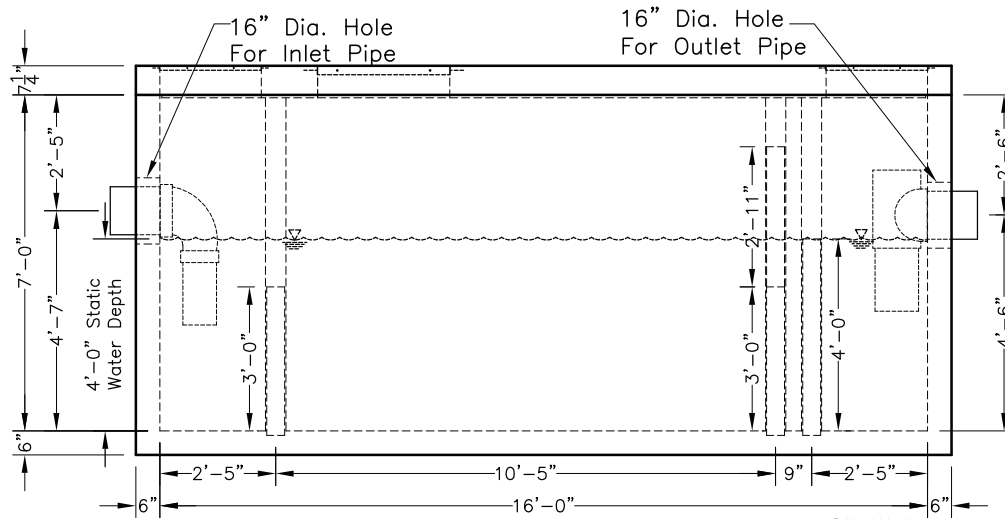
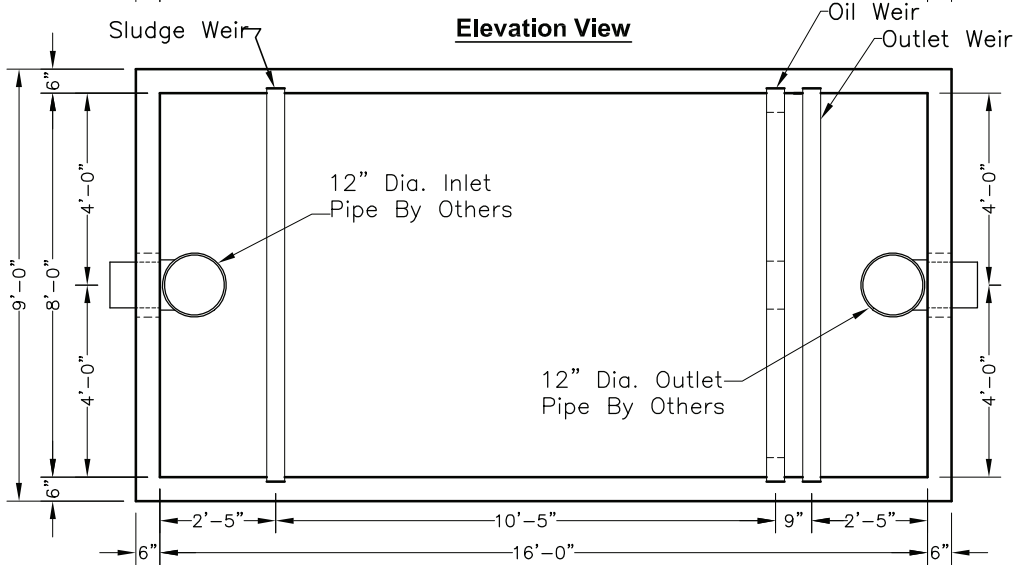
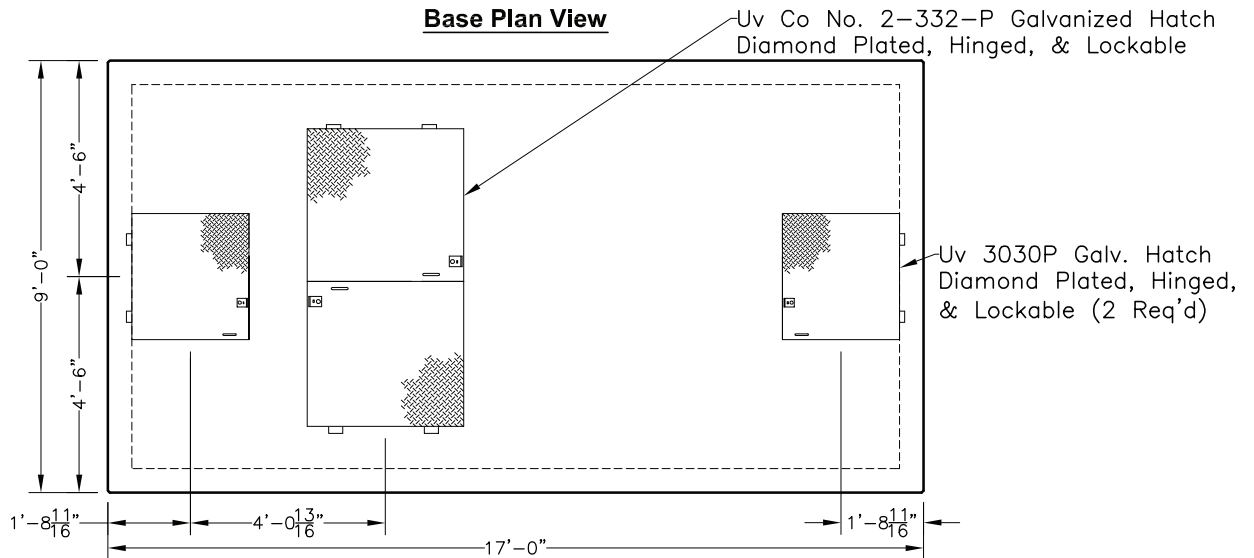
Outlet Weir
Weight = 1,687 lbs.

12" Dia. Outlet
Pipe Supplied
By Contractor



Design Information

- Influent Conditions
- 45° Water Temperature
 - 0.85 Oil Specific Gravity
 - 100 PPM Influent Concentration


Elevation View

Base Plan View

Lid Plan View