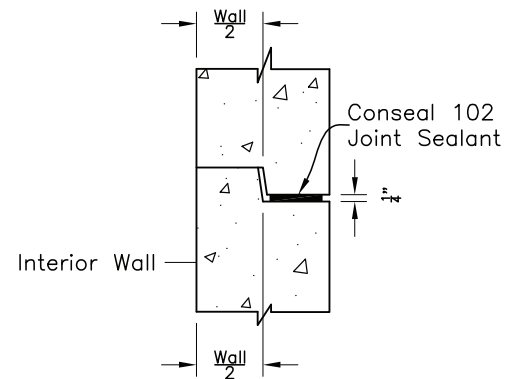


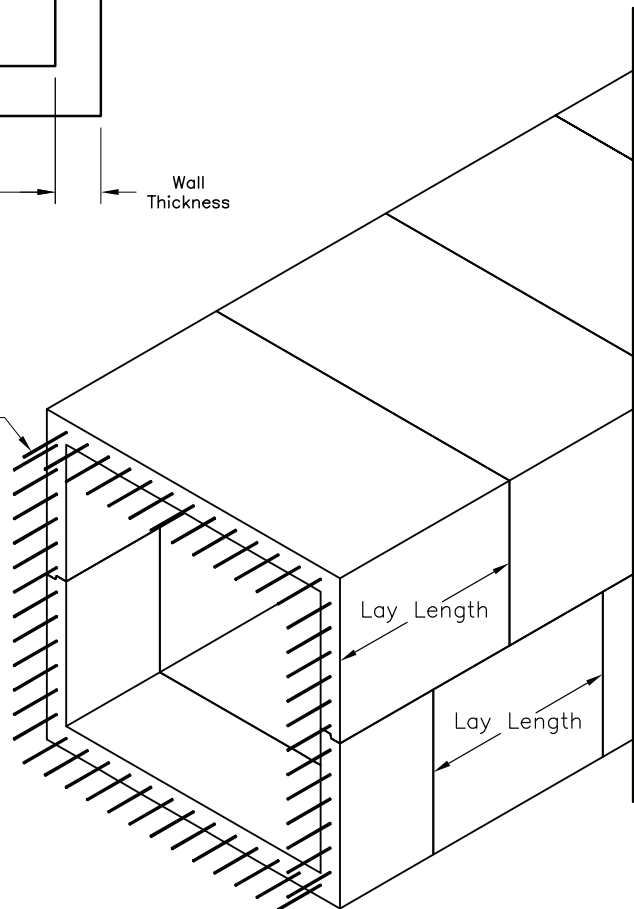
Culvert Cross Section



Ship-Lap Joint Detail

Typical Culvert Sizing		
Span	Max. Rise	Wall Thickness
2'-0"	4'-0"	4"
2'-2"	6'-0"	6"
2'-8"	6'-0"	6"
3'-0"	6'-0"	6"
3'-4"	6'-0"	6"
4'-0"	10'-0"	6"
5'-0"	7'-0"	6"
6'-0"	10'-0"	6"
7'-0"	10'-0"	6"
8'-0"	10'-0"	6"
10'-0"	7'-0"	6"
11'-0"	11'-0"	8"
12'-0"	11'-0"	8"

Epoxy Coated Dowel Extensions for Head-Wall & Wing-Wall Attachment



Split Box Culvert Isometric View
(For Reference Only)

**Inside Rise is Variable in 1" increments up to Max. Rise
 **Different Sizing Than Shown is Available Upon Request