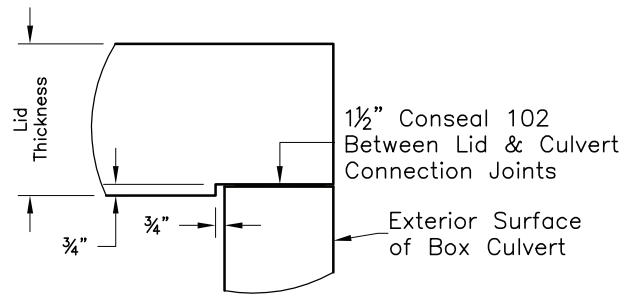
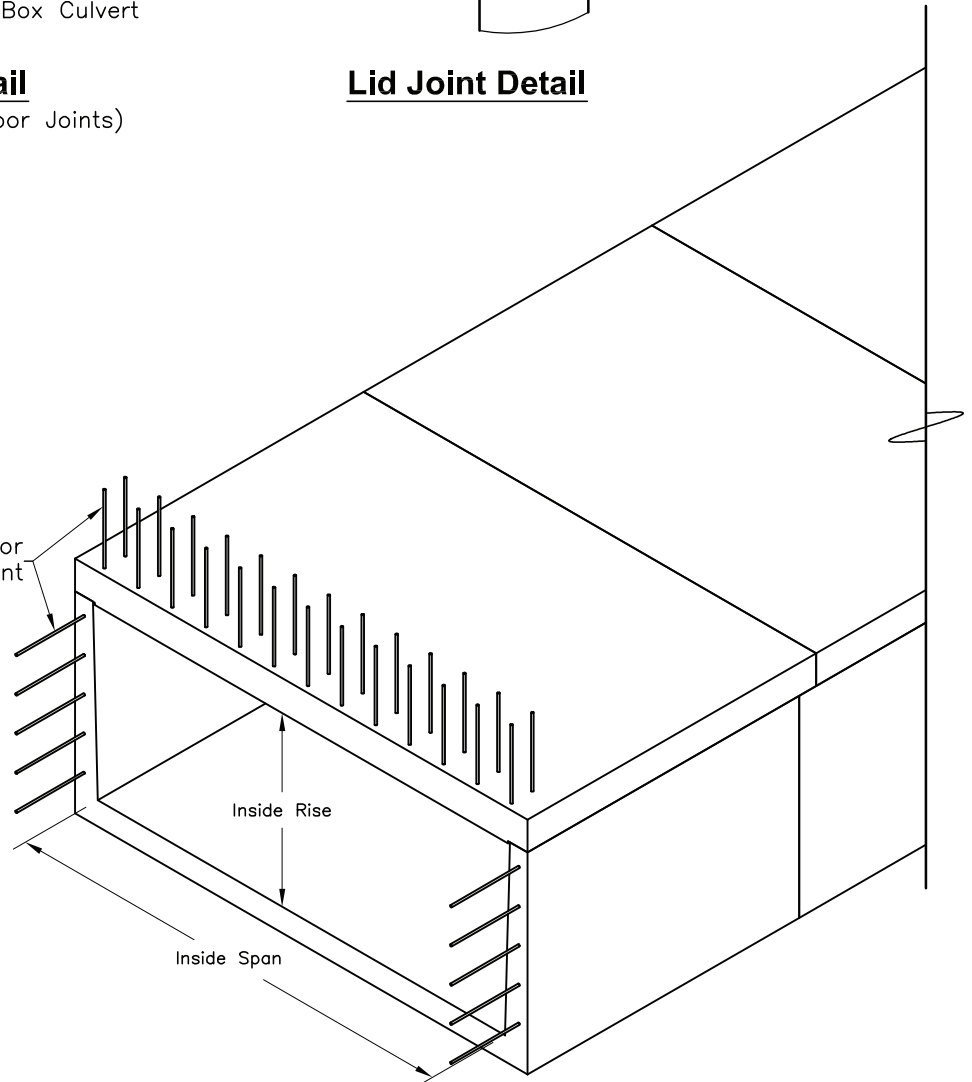

**Culvert Joint Detail**

(Typical for Culvert Wall &amp; Floor Joints)


**Lid Joint Detail**

Epoxy Coated Dowel Extensions for Wing-Wall &amp; Head-Wall Attachment

Typical Culvert Sizing		
Span	Max. Rise	Wall Thickness
2'-0"	2'-0"	4"
2'-2"	3'-0"	6"
2'-8"	3'-0"	6"
3'-0"	3'-0"	6"
3'-4"	4'-0"	6"
4'-0"	6'-0"	6"
5'-0"	3'-6"	6"
6'-0"	7'-0"	6"
7'-0"	7'-0"	6"
8'-0"	7'-0"	6"
10'-0"	3'-6"	6"
11'-0"	5'-9"	8"
12'-0"	5'-9"	8"


**Split Box Culvert Isometric View**

(For Reference Only)

\*\*Inside Rise is Variable in 1" increments up to Max. Rise  
 \*\*Different Sizing Than Shown is Available Upon Request