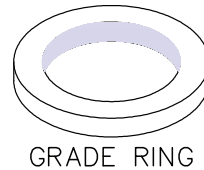
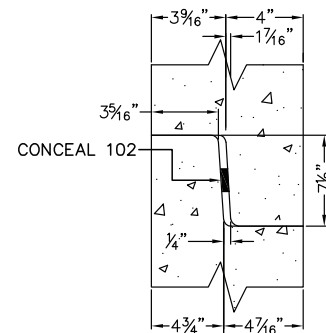
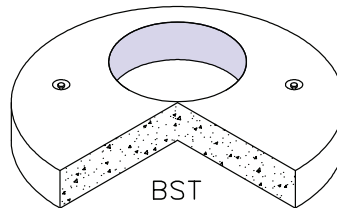


Grade Ring Options					
Height	Access	Weight	Height	Access	Weight
0'-2"	ø24"	80 lbs.	0'-2"	ø37"	142 lbs.
0'-3"	ø24"	120 lbs.	0'-4"	ø37"	284 lbs.
0'-4"	ø24"	160 lbs.	0'-6"	ø37"	426 lbs.
0'-6"	ø24"	240 lbs.	1'-0"	ø37"	852 lbs.
0'-2"	ø30"	118 lbs.			
0'-3"	ø30"	177 lbs.			
0'-4"	ø30"	236 lbs.			
0'-6"	ø30"	354 lbs.			



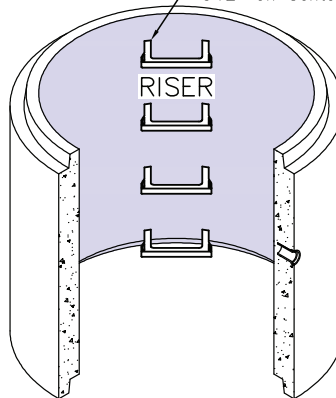
Butt Slab Top Options (BST)			
*Access Hole Size And Location May Vary			
Height	Access	Weight	Lift Gear
11"	ø24"	9,315 lbs.	8 Ton Swift Lift
11"	ø30"	9,072 lbs.	8 Ton Swift Lift
11"	ø36"	8,775 lbs.	8 Ton Swift Lift



Manhole Steps Located
 @12" on Center (Typical)

ALL RADII = ¼"
 N.T.S.

Riser Options		
Height	Weight	Lift Gear
2'-0"	6,190 lbs.	8 Ton Swift Lift
3'-0"	9,285 lbs.	8 Ton Swift Lift
4'-0"	12,380 lbs.	8 Ton Swift Lift
5'-0"	15,475 lbs.	8 Ton Swift Lift
6'-0"	18,570 lbs.	8 Ton Swift Lift
7'-0"	21,665 lbs.	8 Ton Swift Lift



Notes
1. ALL MANHOLE MATERIAL IS DESIGNED AND MANUFACTURED ACCORDING TO ASTM C-478 SPECIFICATIONS.
2. ALL MANHOLE MATERIAL IS SUITABLE FOR HS-20 LOADING.

Base Options (PBU)		
**Weights Shown Do Not Include Invert		
Height	Weight	Lift Gear
3'-6"	23,798 lbs.	8 Ton Swift Lift
4'-0"	25,345 lbs.	8 Ton Swift Lift
5'-0"	28,440 lbs.	8 Ton Swift Lift
6'-0"	31,535 lbs.	8 Ton Swift Lift

