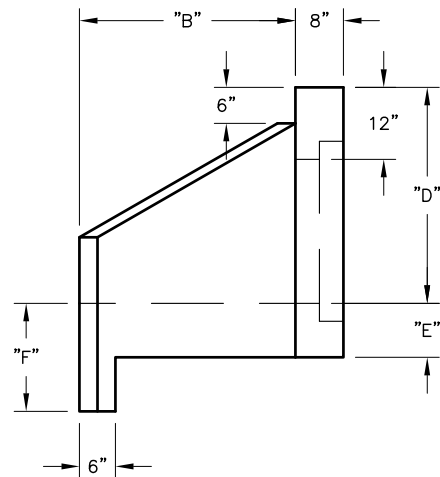
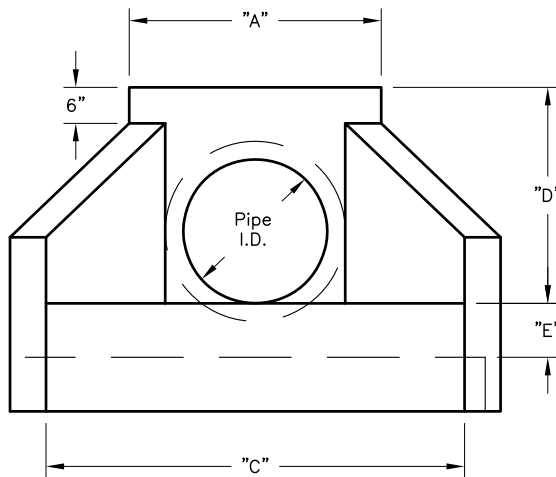


Headwall Dimensions									
Pipe I.D.	"A"	"B"	"C"	"D"	"E"	"F"	"G"	Weight	Item#
18"	35"	24"	48"	30"	7"	18"	30"	2170 Lbs.	1221020
24"	42"	36"	69"	36"	9"	18"	29"	4000 Lbs.	1221040
30"	49"	60"	111"	41"	7"	16"	27"	4965 Lbs.	1221060


**SPECIFICATIONS:**

1. Concrete: Class "C" with design strength of 5000 PSI at 28 days.
2. Steel reinforcement: ASTM A-615 Grade 60 or ASTM A-497 Welded wire fabric.
3. Loading: Designed for H20 Loading.
4. C.I. Castings: ASTM A48, Class 30/35.
5. All exposed Corners shall be Chamfered 3/4".