

NOTES:

1. PERFORATIONS ARE 1 1/2" (40mm) IN DIAMETER.
2. PERFORATIONS ARE SPACED AT APPROX. 12" (305mm) IN BOTH DIRECTIONS.
3. NORMAL HEIGHT IS 6'-0" (1830mm), (2 SECTIONS).
4. METRIC EQUIVALENTS (SHOWN IN PARENTHESIS) ARE ROUNDED TO NEAREST 5mm OR 5kg.



2240 S. Yellowstone Hwy, Idaho Falls, Idaho 83402
Phone: 208-522-6150 Fax: 208-522-9701

Manholes

FILE NAME: 230TBMH01

ISSUE DATE: 1/2011

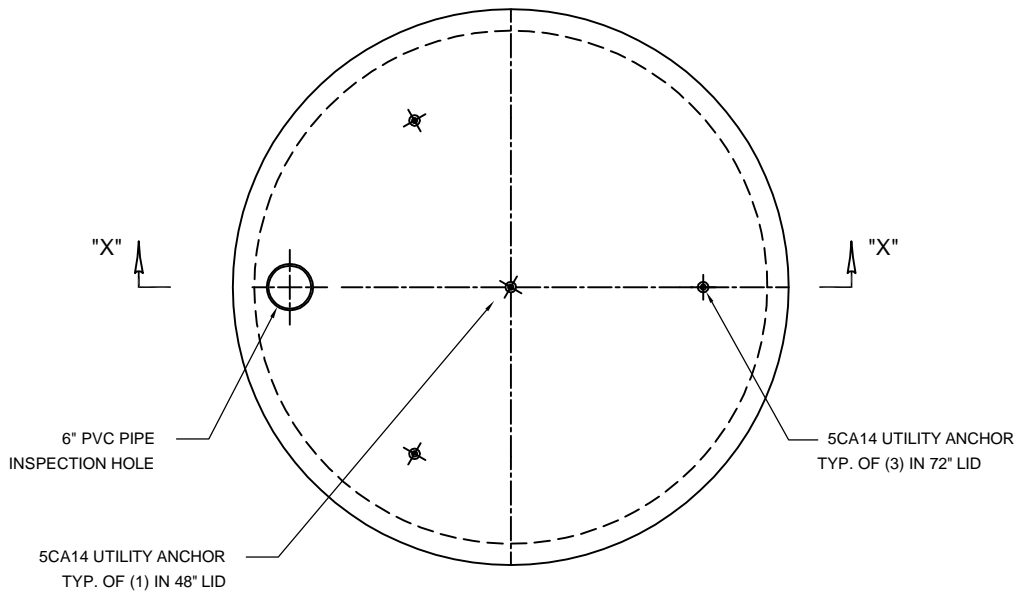
www.oldcastleprecast.com

48" & 72" Seepage Pit & Lid

Stack Assembly

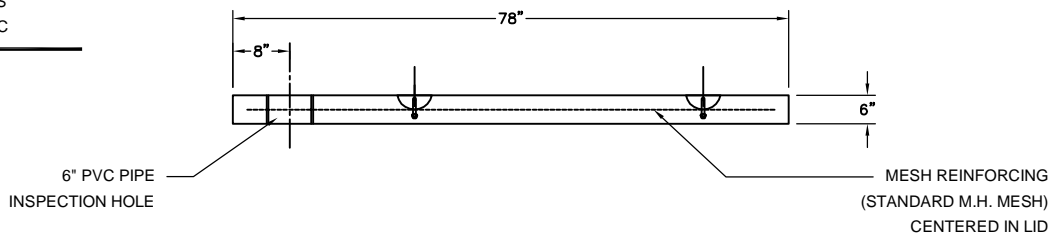
ISO View

Copyright © 2011

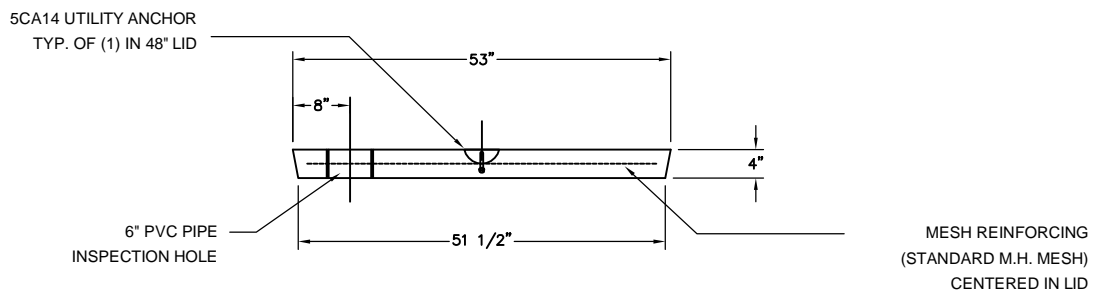


**LID PLAN VIEW
FOR 72" SEEPAGE PIT SHOWN
48" SEEPAGE PIT SIMILAR**

TYP.
CUT MESH AS
REQD AT PVC



SECTION A-A FOR 72"Ø SEEPAGE PIT LID



SECTION A-A FOR 48"Ø SEEPAGE PIT LID



2240 S. Yellowstone Hwy, Idaho Falls, Idaho 83402
Phone: 208-522-6150 Fax: 208-522-9701

Manholes

FILE NAME: 230TBMH01

ISSUE DATE: 1/2011

www.oldcastleprecast.com

48" & 72" Seepage Pit & Lid Stack Assembly

Copyright © 2011