

NOTES:

1. VAULTS ARE DESIGNED TO MEET ASTM C857 AND ACI 318 WITH AASHTO HS-20 LOADING.
2. INTERIOR WALLS & CEILING HAVE (2) COATS OF FLAT WHITE PAINT.
3. SEE U.S. WEST SPECIFICATIONS GOVERNING VAULT OPENINGS.
4. DETAILS OF HARDWARE ARE LOCATED AT THE END OF THIS SECTION.
5. IT IS RECOMMENDED THAT BITUMINOUS MASTIC BE USED AT ALL JOINTS.
6. (2) SUMPS ARE REQUIRED FOR THE TREASURE VALLEY AREA.



2240 S. Yellowstone Hwy, Idaho Falls, Idaho 83402
Phone: 208-522-6150 Fax: 208-522-9701

Communication

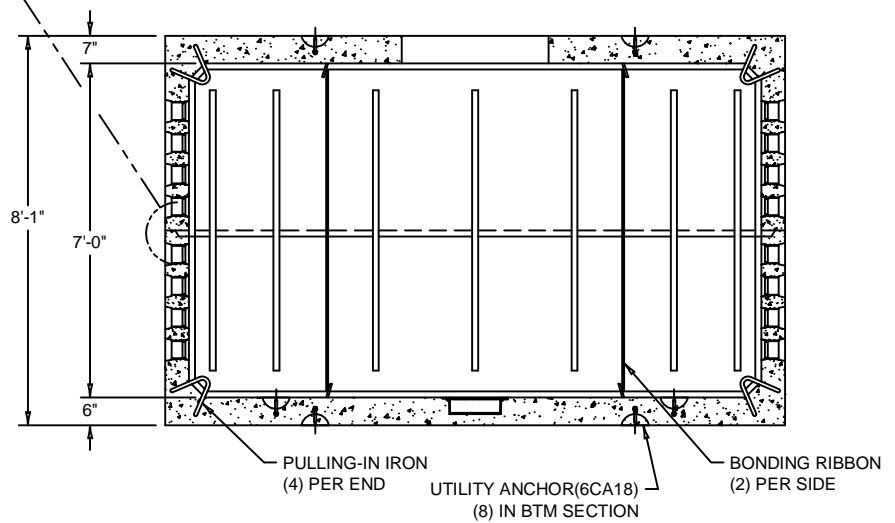
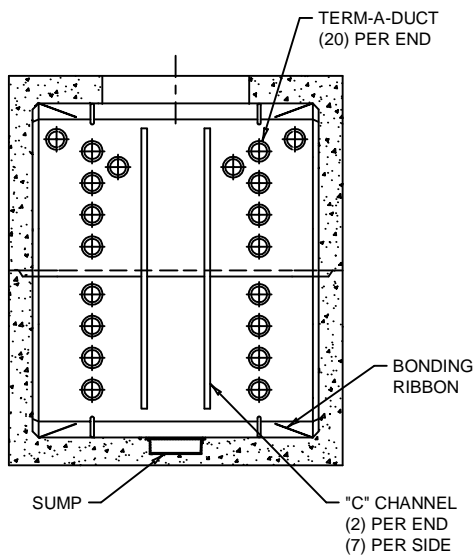
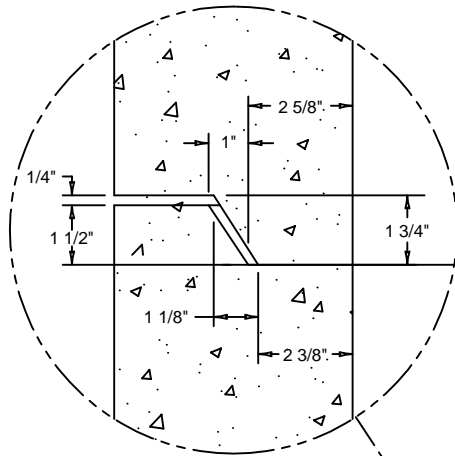
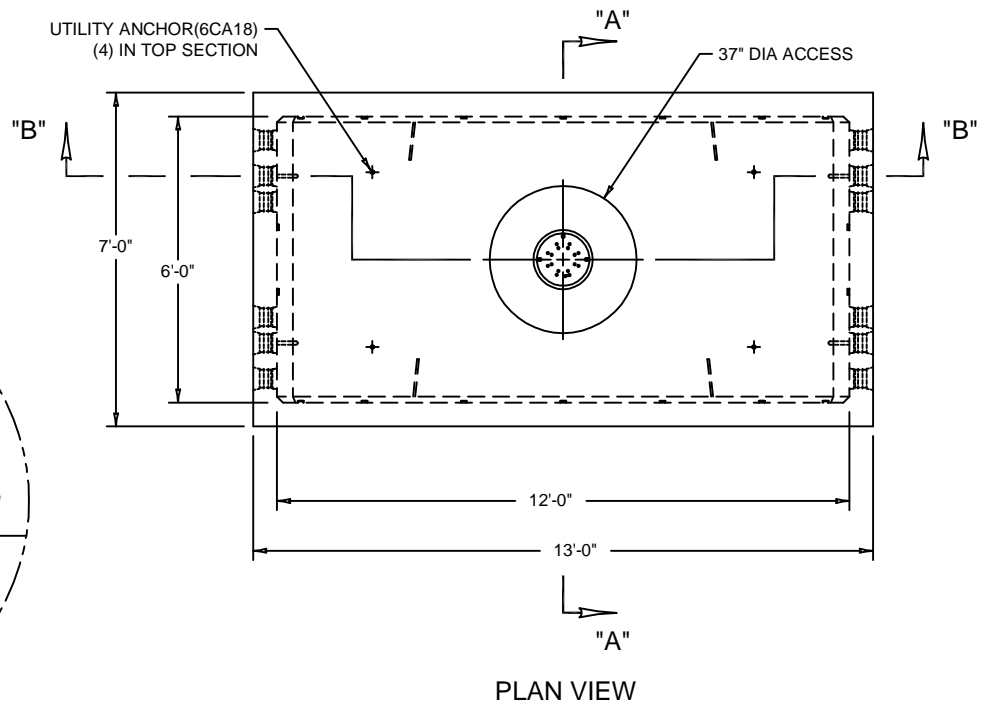
FILE NAME: 230TBCOMM09

ISSUE DATE: 1/2011

www.oldcastleprecast.com

Comm. Vault
6'-0" X 12'-0"
ISO View

Copyright © 2011



2240 S. Yellowstone Hwy, Idaho Falls, Idaho 83402
Phone: 208-522-6150 Fax: 208-522-9701

Communication

FILE NAME: 230TBCOMM09

ISSUE DATE: 1/2011

www.oldcastleprecast.com

Comm. Vault
6'-0" X 12'-0"

Copyright © 2011