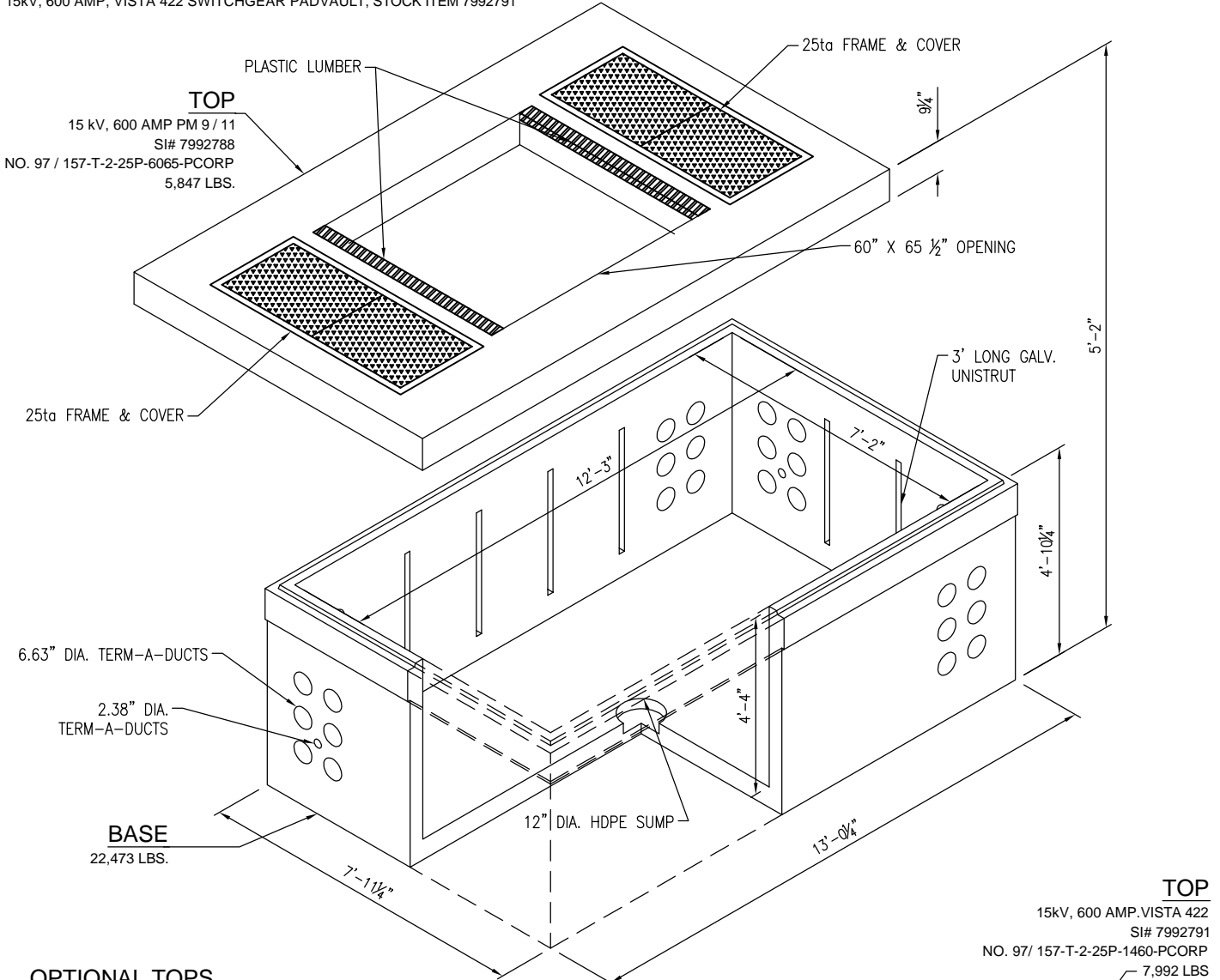
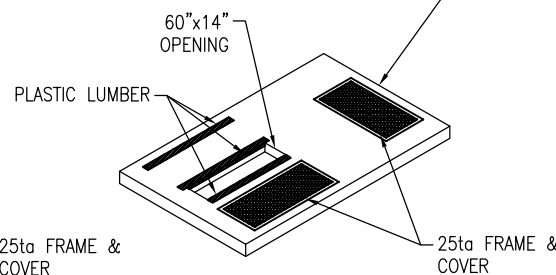
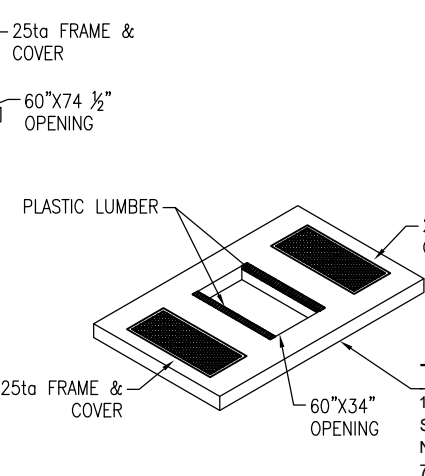
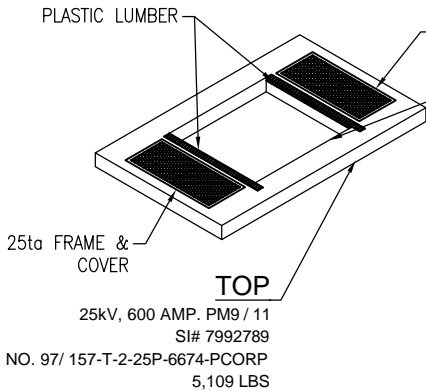


15kV, 600 AMP, PME9 / 11 SWITCHGEAR PADVAULT, STOCK ITEM 7992788
 25 kV, 600 AMP, PME9 / 11 SWITCHGEAR PADVAULT PADVAULT, STOCK ITEM 7992789
 15 / 25 kV, 600 AMP, PM3 SWITCHGEAR 1000 kcmil CABLE, PADVAULT, STOCK ITEM 7992790
 15kV, 600 AMP, VISTA 422 SWITCHGEAR PADVAULT, STOCK ITEM 7992791



OPTIONAL TOPS

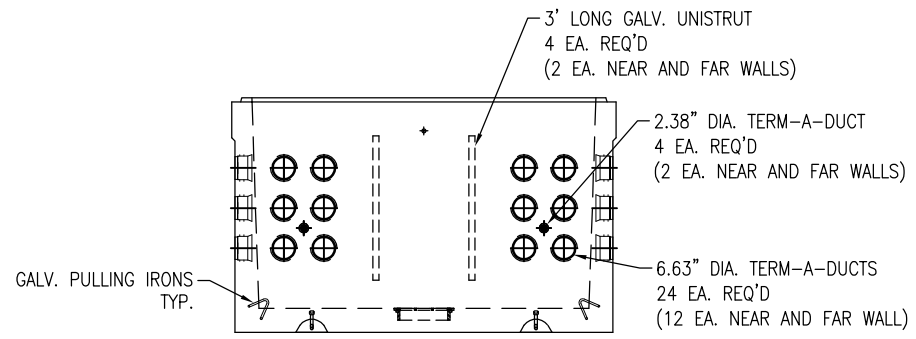
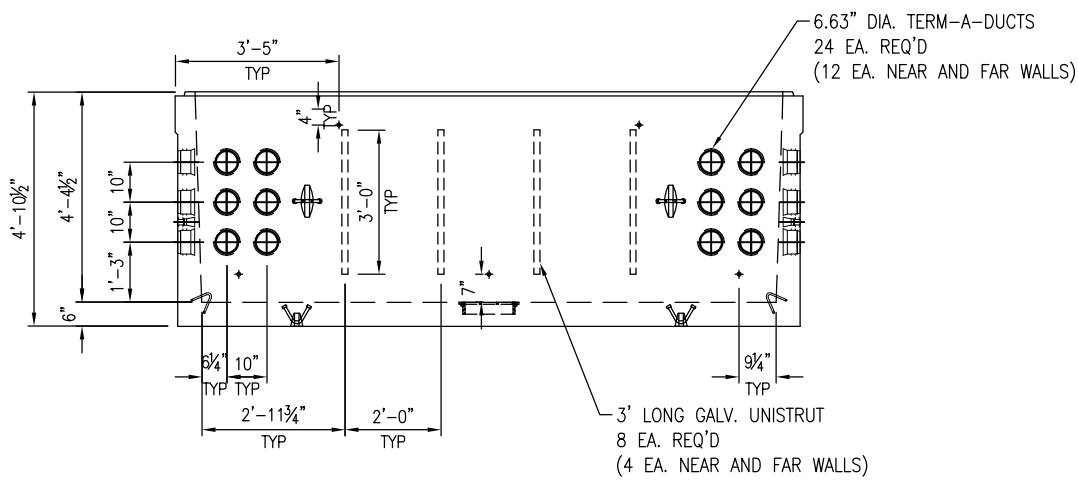
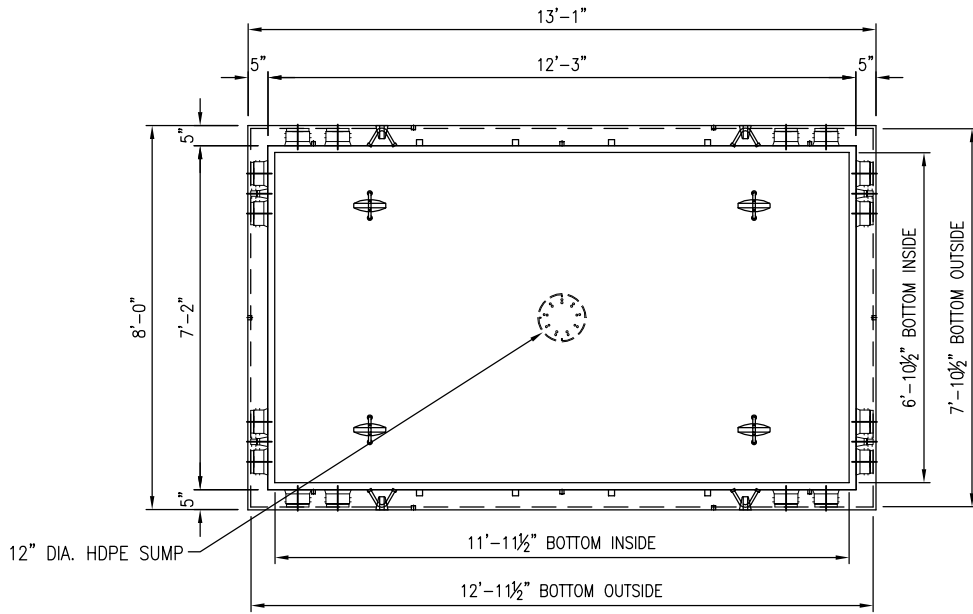


Oldcastle Precast
 2240 S. Yellowstone Hwy, Idaho Falls, Idaho 83402
 Phone: 208-522-6150 Fax: 208-522-9701

712 SWITCH
 FILE NAME: 712SWITCHCATALOG
 ISSUE DATE: 1/2011
www.oldcastleprecast.com

**7'X12' PADVAULT
 DEADFRONT SWITCHGEAR
 Pacificorp**
 Copyright © 2011

*JOINT NEEDED ONLY WHEN ORDERING 712 SLEEVE



*LIFTING DEVICE TYPE & LOCATION MAY CHANGE WITHOUT NOTICE

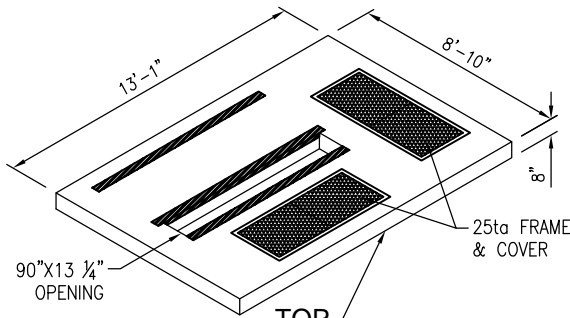


2240 S. Yellowstone Hwy, Idaho Falls, Idaho 83402
Phone: 208-522-6150 Fax: 208-522-9701

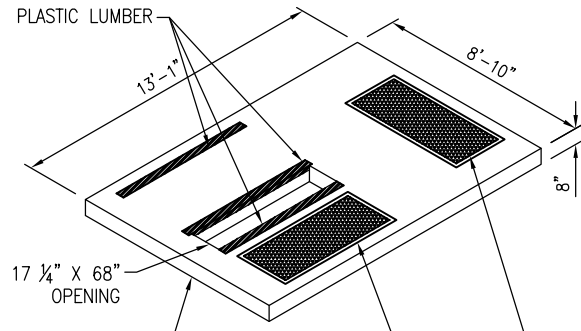
7'X12' SWITCH
FILE NAME: 712SWITCHCATALOG
ISSUE DATE: 1/2011
www.oldcastleprecast.com

**7'X12' PADVAULT
DEADFRONT SWITCHGEAR**
Pacificorp
Copyright © 2011

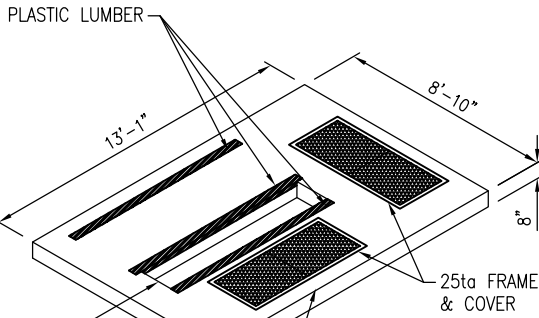
15KV, 600 AMP, VISTA 523 / 624 SWITCHGEAR PADVAULT, STOCK ITEM 7992792
 25 / 35 KV, 600 AMP, VISTA 422 SWITCHGEAR PADVAULT, STOCK ITEM 7992793
 25 KV, 600 AMP, VISTA, 523 / 624 SWITCHGEAR PADVAULT, STOCK ITEM 7992794
 600 AMP, 3-PHASE PRIMARY METERING CABINET PADVAULT, STOCK ITEM 3090370
 5 POSITION 3-PHASE FUSING CABINET PADVAULT, STOCK ITEM 7992881
 FULL TRAFFIC PADVAULT



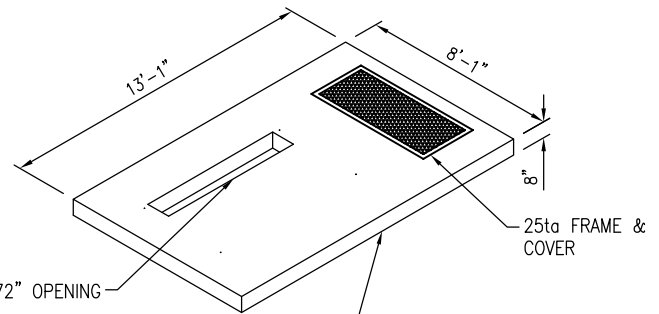
TOP
 15KV, 600 AMP, VISTA 523 / 624
 SI# 7992792
 NO. 106 / 157-T-2-25P-1390-PCORP
 7,732 LBS.



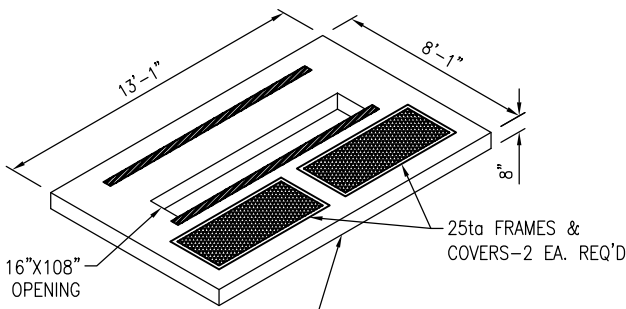
TOP
 25 / 35 KV, 600 AMP, VISTA 422
 SI# 7992793
 NO. 106 / 157-T-2-25P-1768-PCORP
 7,498 LBS.



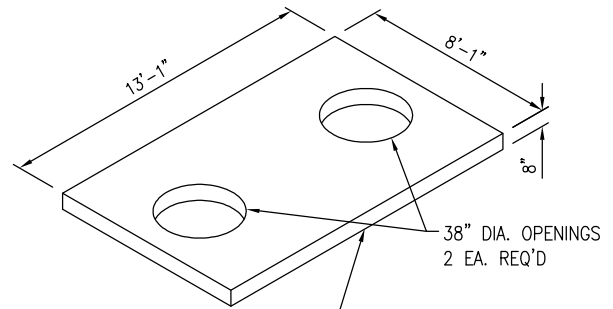
TOP
 25KV, 600 AMP, VISTA 523 / 624
 SI# 7992794
 NO. 106 / 157-T-2-25P-1790-PCORP
 7,761 LBS.



TOP
 600 AMP, 3-PHASE PRIMARY METERING CABINET
 SI# 3090370
 NO. 97 / 157-T-25P-1272-PCORP
 8,976 LBS.



TOP
 5 POSITION 3-PHASE FUSE CABINET
 SI# 7992881
 NO. 25P-14 / 108-PCORP
 7,309 LBS.



TOP
 FULL TRAFFIC PADVAULT
 9,000 LBS.

*LIFTING DEVICE TYPE & LOCATION MAY CHANGE WITHOUT NOTICE



2240 S. Yellowstone Hwy, Idaho Falls, Idaho 83402
 Phone: 208-522-6150 Fax: 208-522-9701

7'X12' SWITCH

FILE NAME: 712SWITCHCATALOG

ISSUE DATE: 1/2011

www.oldcastleprecast.com

7'X12' PADVAULT DEADFRONT SWITCHGEAR Pacificorp

Copyright © 2011