

2240 S. Yellowstone Hwy, Idaho Falls, Idaho 83402  
Phone: 208-522-6150 Fax: 208-522-9701

## Box Culvert

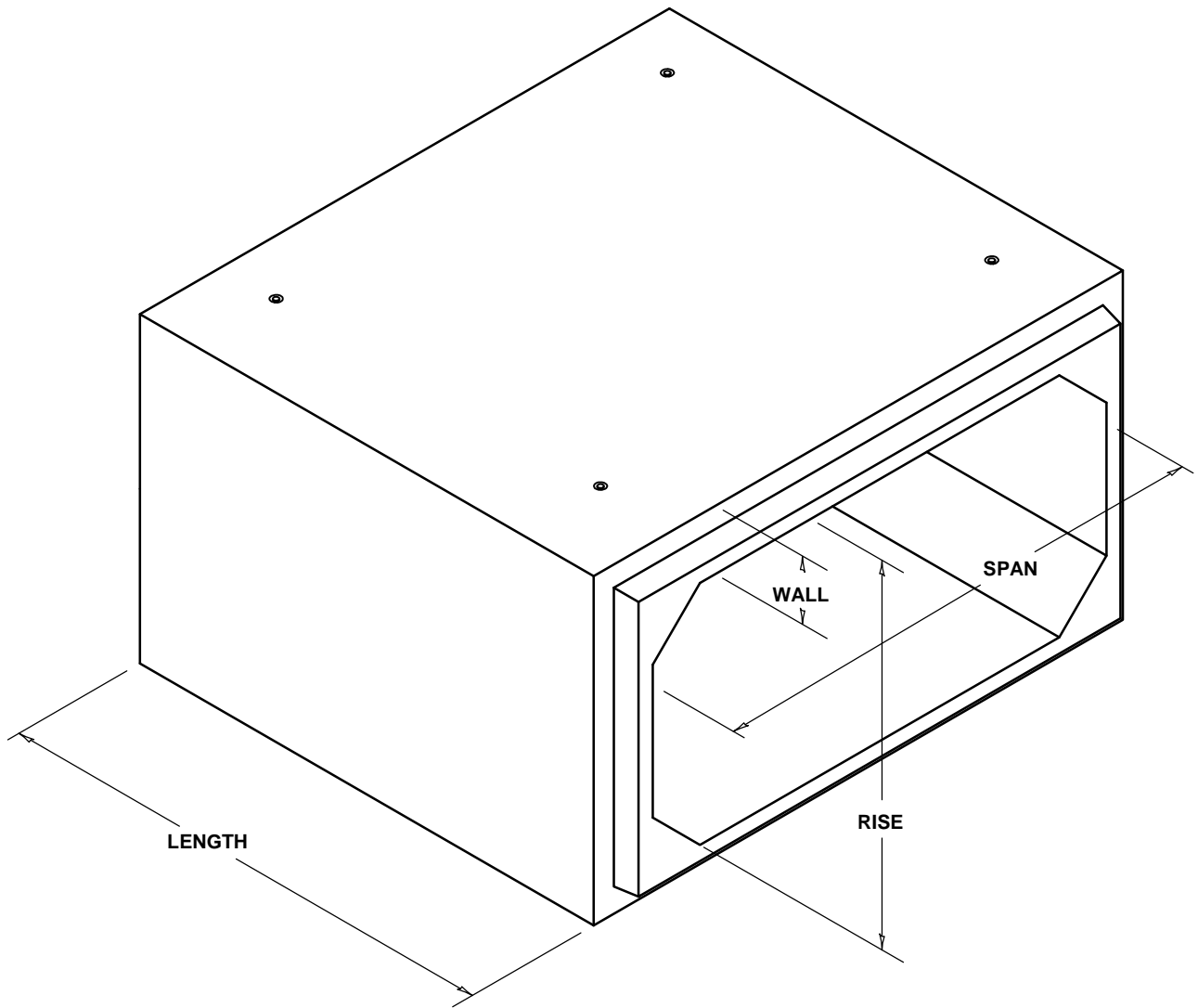
FILE NAME: 230DBSBOXCULV1

ISSUE DATE: 1/2011

[www.oldcastleprecast.com](http://www.oldcastleprecast.com)

**Box Culvert**  
**3' x 3' Min. Size**  
**AASHTO HS-20 Loading**

Copyright © 2010



2240 S. Yellowstone Hwy, Idaho Falls, Idaho 83402  
 Phone: 208-522-6150 Fax: 208-522-9701

## Box Culvert

FILE NAME: 230DBSBOXCULV1

ISSUE DATE: 1/2011

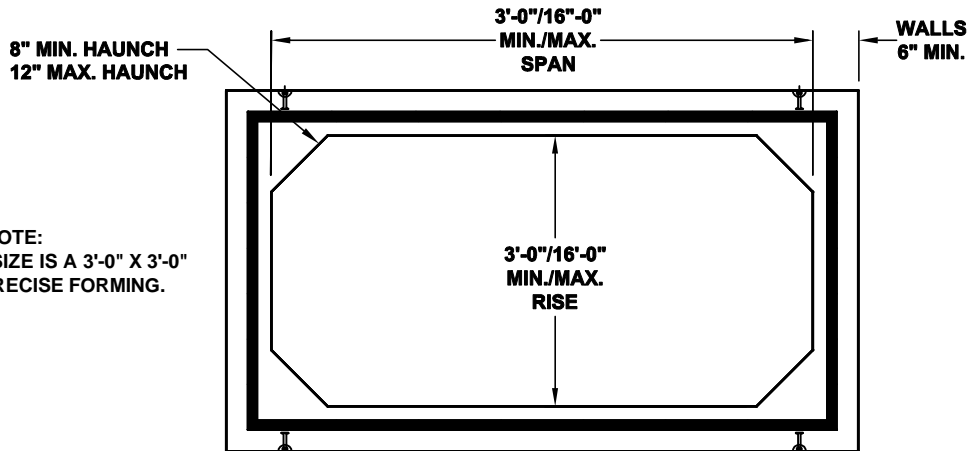
[www.oldcastleprecast.com](http://www.oldcastleprecast.com)

**Box Culvert - Precise Forming**

**3' x 3' Min. Size**

**AASHTO HS-20 Loading**

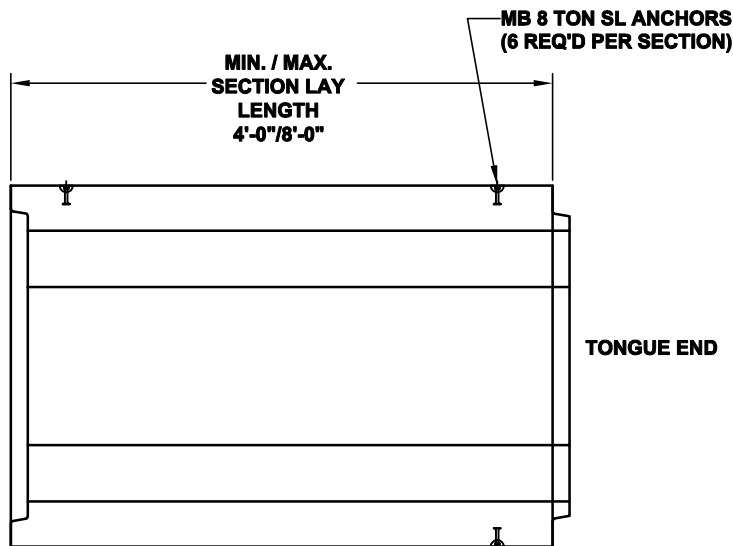
Copyright © 2010



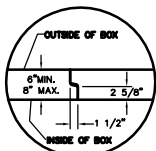
NOTE:  
THE SMALLEST SIZE IS A 3'-0" X 3'-0"  
BOX, USING PRECISE FORMING.

PROFILE VIEW

NOTE:  
LAY LENGTHS & WALL THICKNESS  
WILL BE DETERMINE BY LOAD  
RATINGS & OVERALL WEIGHT.

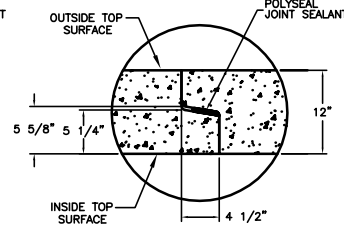
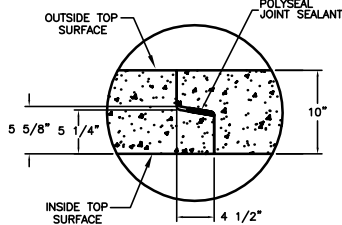
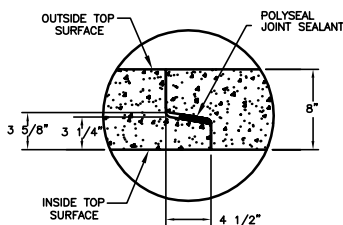
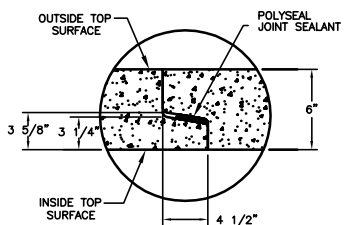


NOTE:  
TWO DIFF. JOINTS ARE AVAILABLE  
FOR 6" & 8" WALLS



JOINT DETAIL FOR WALLS 6" AND 8" THICK

PLAN VIEW



JOINT DETAIL FOR WALLS 6" AND 8" THICK

JOINT DETAIL FOR WALLS 10" AND 12"



2240 S. Yellowstone Hwy, Idaho Falls, Idaho 83402  
Phone: 208-522-6150 Fax: 208-522-9701

# Box Culvert

FILE NAME: 230DBSBOXCULV1

ISSUE DATE: 1/2011

[www.oldcastleprecast.com](http://www.oldcastleprecast.com)

## Box Culvert - Precise Forming

3' x 3' Min. Size  
AASHTO HS-20 Loading

Copyright © 2010