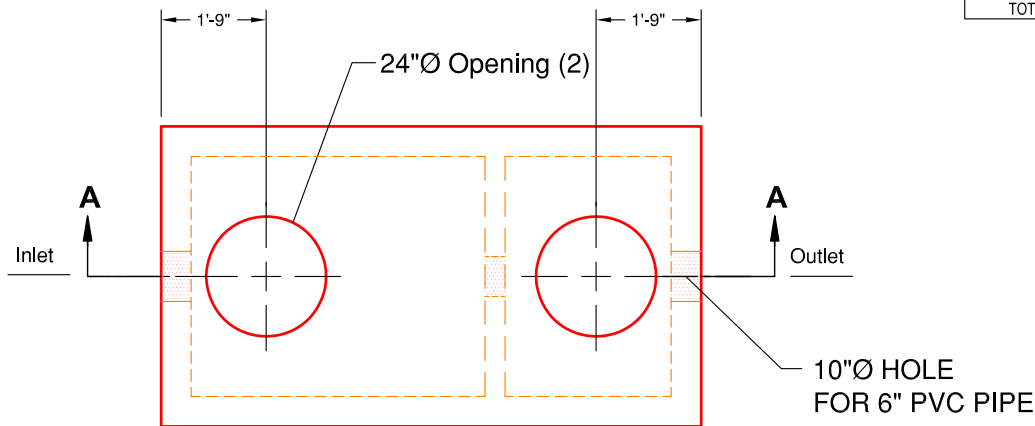
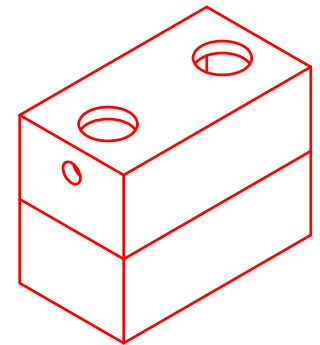
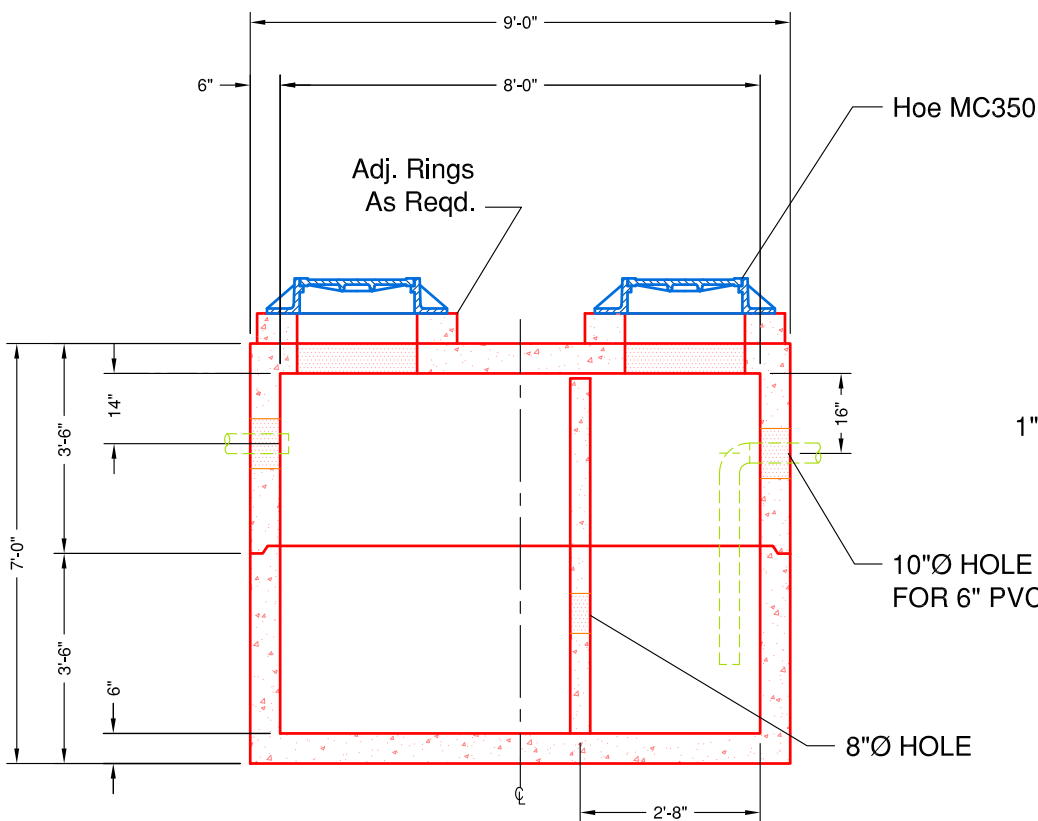
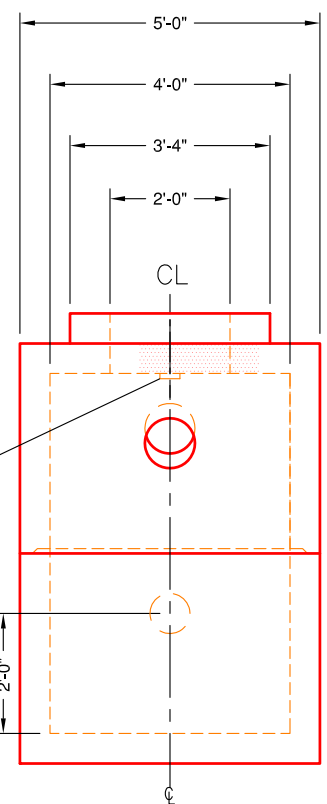


WEIGHTS	
SECTION	WEIGHT
TOTAL	19,200 LBS


PLAN VIEW

ISO VIEW
SCALE: 1/8" = 1'-0"

SECTION A-A

END VIEW
SPECIFICATIONS:

- Concrete minimum compression strength:
F'c=5,000 PSI @ 28 days.
- Reinforcing steel: ASTM A615, Fy=60,000 PSI

ITEMS ARE SUBJECT TO CHANGE WITHOUT NOTICE.