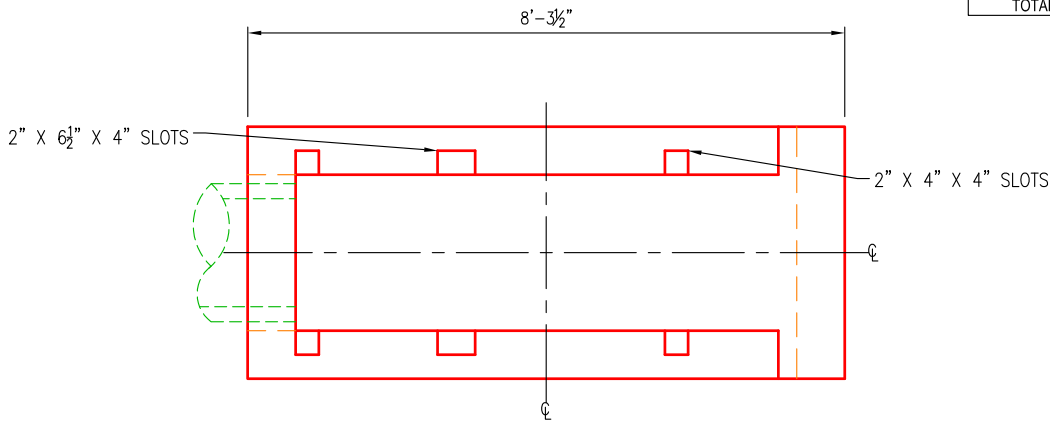
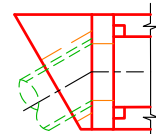


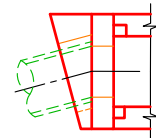
WEIGHTS	
SECTION	WEIGHT
TOTAL	4,860 LBS



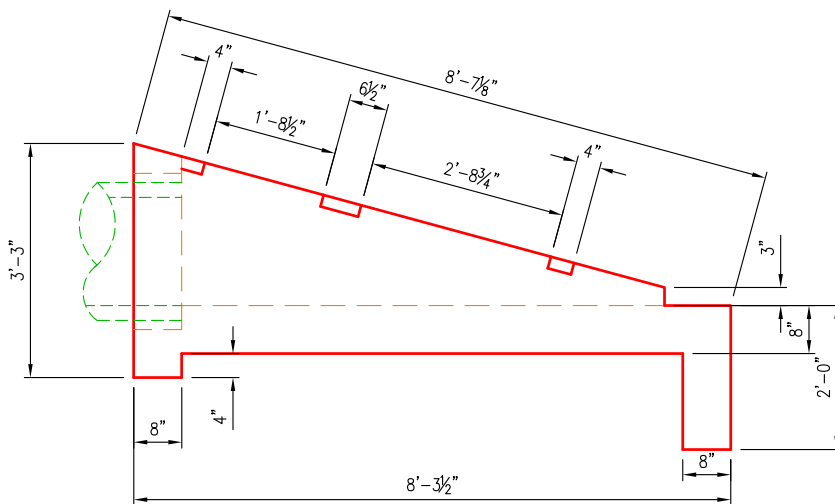
**PLAN VIEW**  
SCALE: 3/8" = 1'-0"



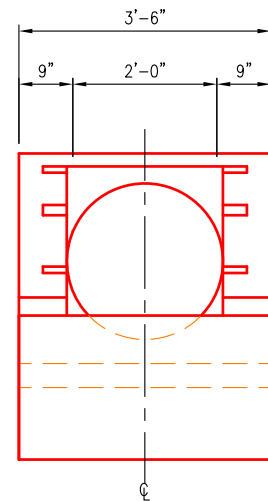
**30° SKEW**



**15° SKEW**



**SIDE VIEW**  
SCALE: 3/8" = 1'-0"



**END VIEW**  
SCALE: 3/8" = 1'-0"

**SPECIFICATIONS:**

- Concrete minimum compression strength:  
F'c=5,000 PSI @ 28 days.
- Reinforcing steel: ASTM A615, Fy=60,000 PSI

ITEMS ARE SUBJECT TO CHANGE WITHOUT NOTICE.