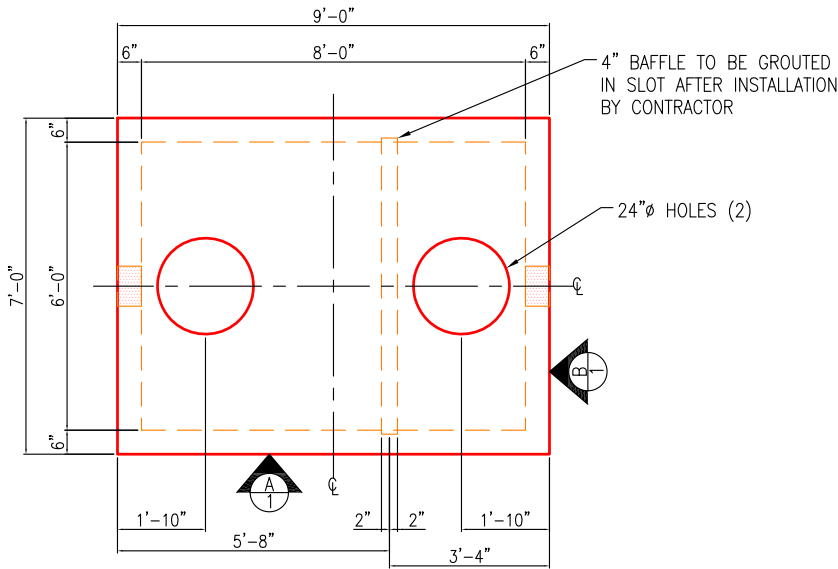
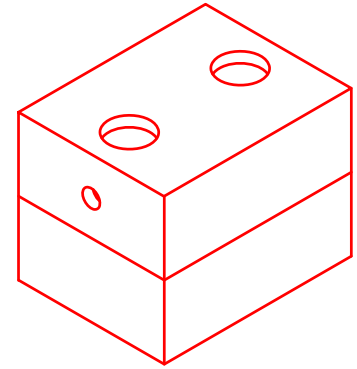


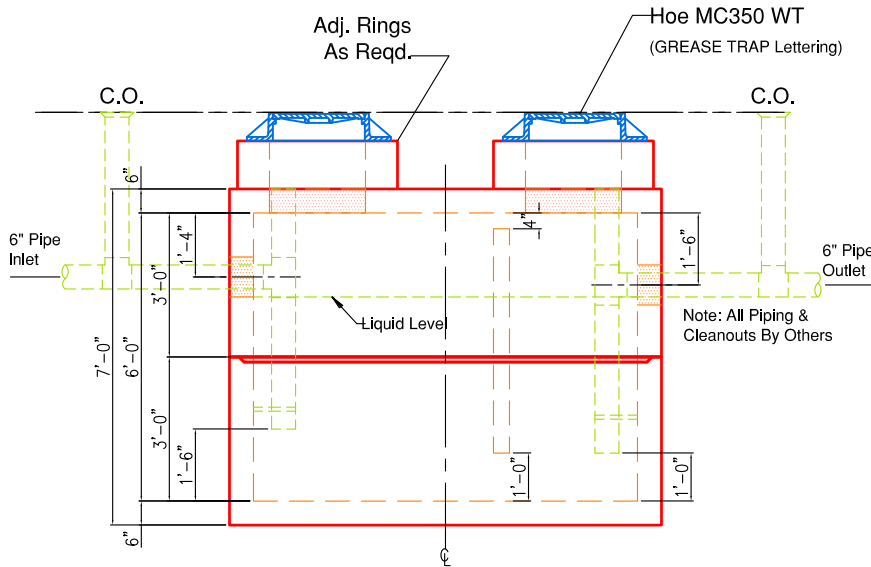
WEIGHTS	
SECTION	WEIGHT
TOP SECTION	10,600 LBS
BASE SECTION	11,500 LBS
TOTAL	22,100 LBS



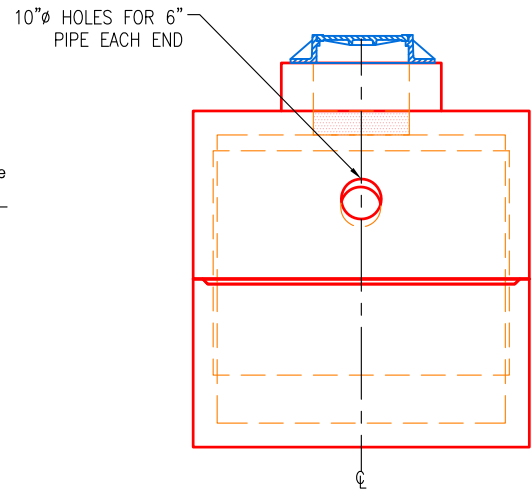
**PLAN VIEW**  
SCALE: 1/4" = 1'-0"



**ISO VIEW**  
SCALE: 1/8" = 1'-0"



**VIEW A**  
SCALE: 1/4" = 1'-0"



**VIEW B**  
SCALE: 1/4" = 1'-0"

**SPECIFICATIONS:**

- Concrete minimum compression strength: F'c=5,000 PSI @ 28 days.
- Reinforcing steel: ASTM A615, Fy=60,000 PSI

ITEMS ARE SUBJECT TO CHANGE WITHOUT NOTICE.