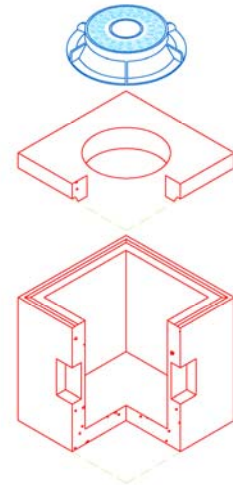
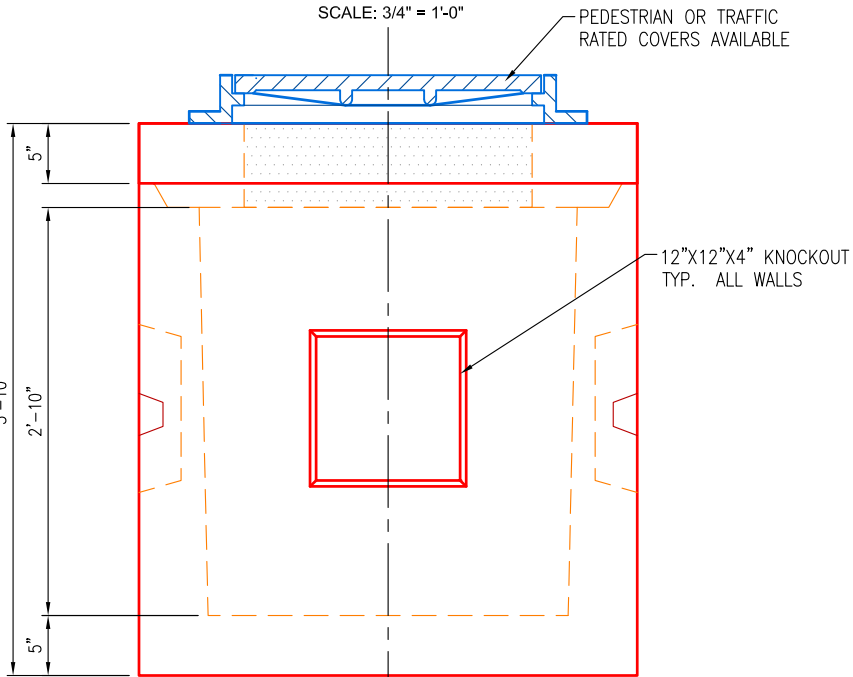


PLAN VIEW
SCALE: 3/4" = 1'-0"

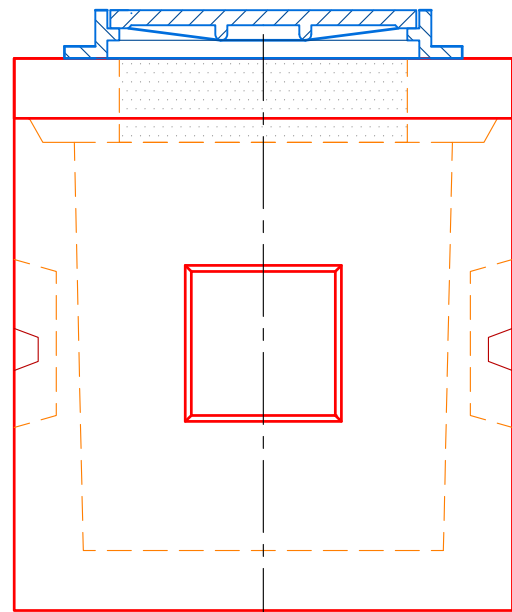
WEIGHTS	
SECTION	WEIGHT
TOP SLAB	800 LBS
BASE SECTION	3,000 LBS
TOTAL	3,800 LBS



ISO VIEW
SCALE: 3/16" = 1'-0"



SIDE VIEW
SCALE: 3/4" = 1'-0"



END VIEW
SCALE: 3/4" = 1'-0"

SPECIFICATIONS:

- Concrete minimum compression strength: F'c=5,000 PSI @ 28 days.
- Reinforcing steel: ASTM A615, Fy=60,000 PSI

ITEMS ARE SUBJECT TO CHANGE WITHOUT NOTICE.