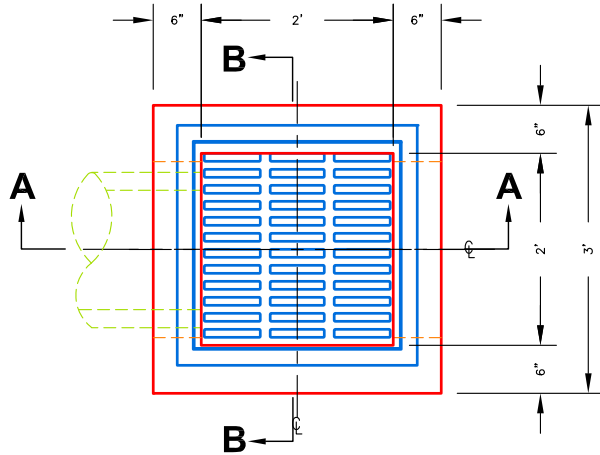
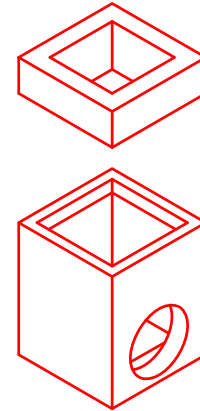
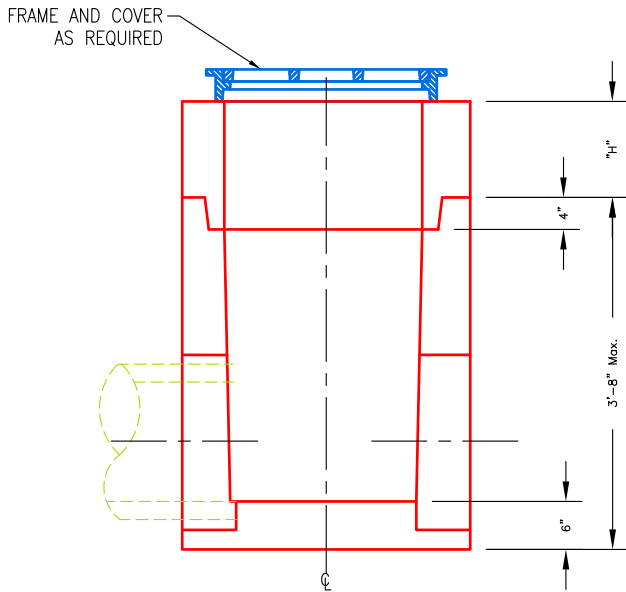
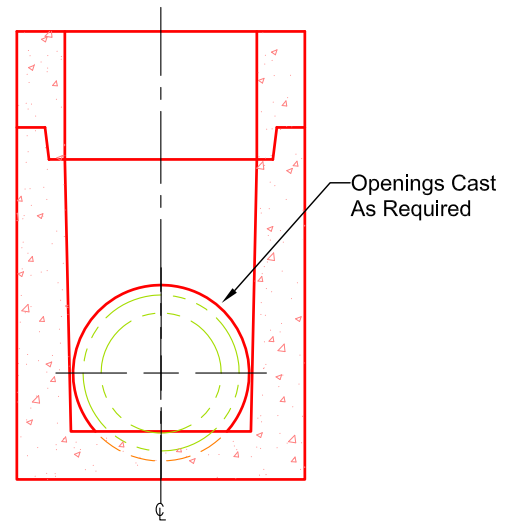


WEIGHTS	
HEIGHT "H"	WEIGHT
6" RISER	450 LBS
12" RISER	900 LBS
24" RISER	1,800 LBS
36" RISER	2,700 LBS
44" BASE	3,750 LBS


PLAN VIEW

ISO VIEW
 SCALE: 1/2" = 1'-0"

SECTION A-A

SECTION B-B
SPECIFICATIONS:

1. Concrete minimum compression strength:
F'c=5,000 PSI @ 28 days.
2. Reinforcing steel: ASTM A615, Fy=60,000 PSI

ITEMS ARE SUBJECT TO CHANGE WITHOUT NOTICE.