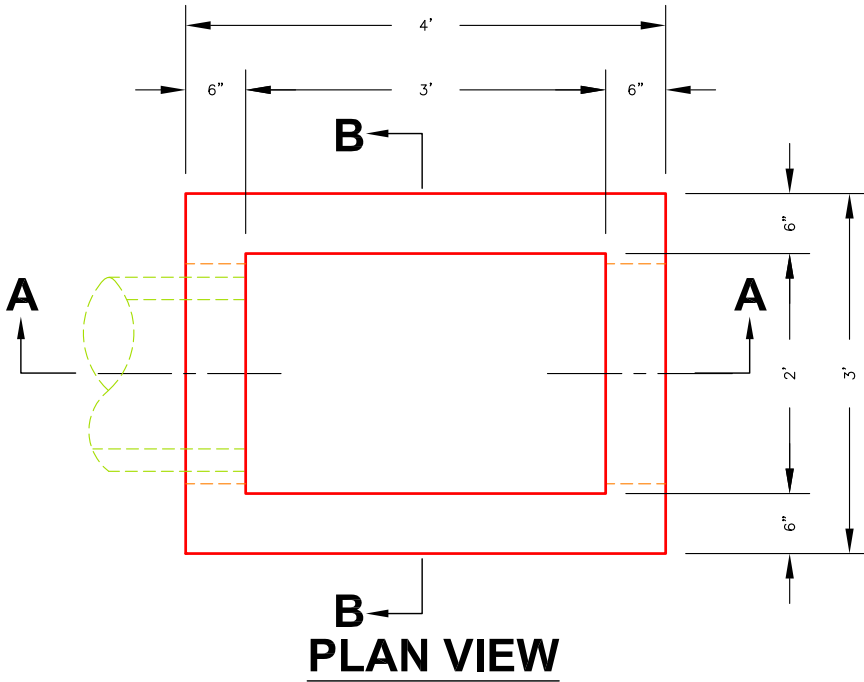




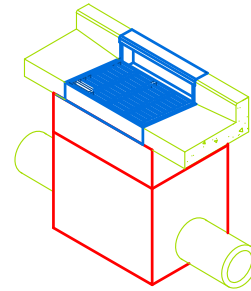
**Oldcastle Precast®**

**WATER**

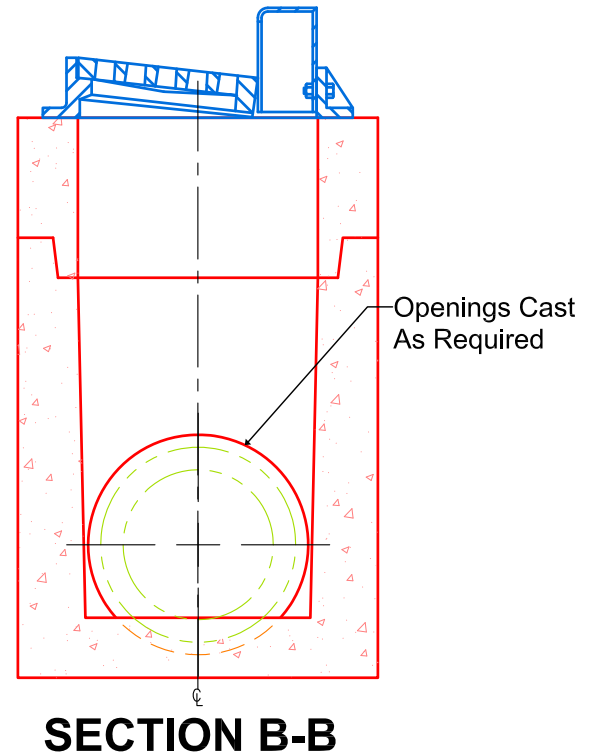
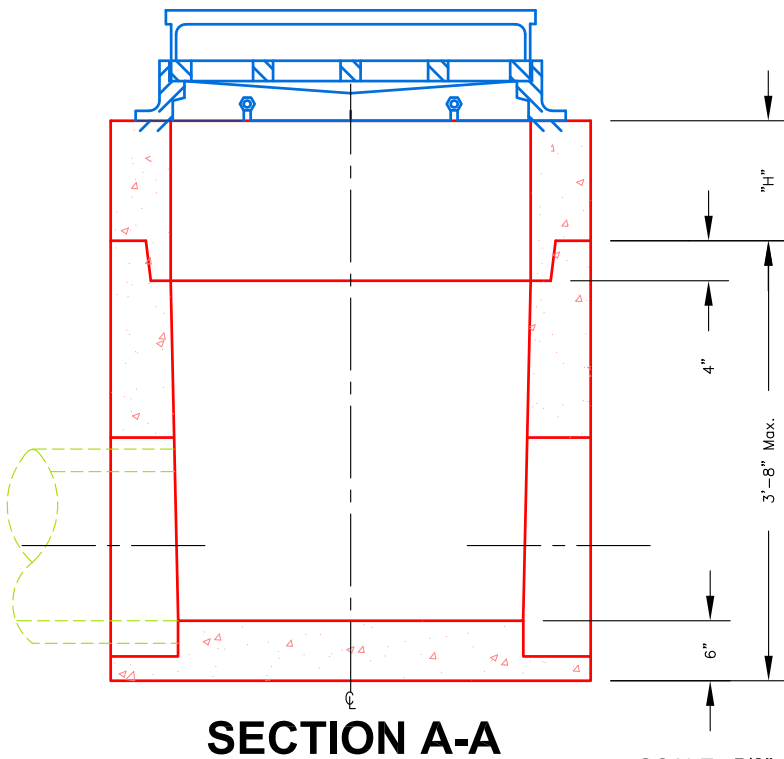
2'-0" X 3'-0" I.D.  
DOUBLE CURB INLET  
MODEL # 2436 DCI-KY



WEIGHTS	
HEIGHT "H"	WEIGHT
6" RISER	450 LBS
12" RISER	900 LBS
24" RISER	1,800 LBS
36" RISER	2,700 LBS
44" BASE	3,750 LBS



**ISOMETRIC VIEW**



SCALE: 5/8" = 1'-0"

**SPECIFICATIONS:**

1. Concrete minimum compression strength:  
F'c=5,000 PSI @ 28 days.
2. Reinforcing steel: ASTM A615, Fy=60,000 PSI

ITEMS ARE SUBJECT TO CHANGE WITHOUT NOTICE.

**Oldcastle Precast  
Tri-State Region**

For more information about our products  
please visit us on the web at:  
[oldcastleprecast.com/plant/lexington/](http://oldcastleprecast.com/plant/lexington/)  
Copyright © 2016 Oldcastle Precast, Inc.

**Lexington, KY  
859-259-1484**